

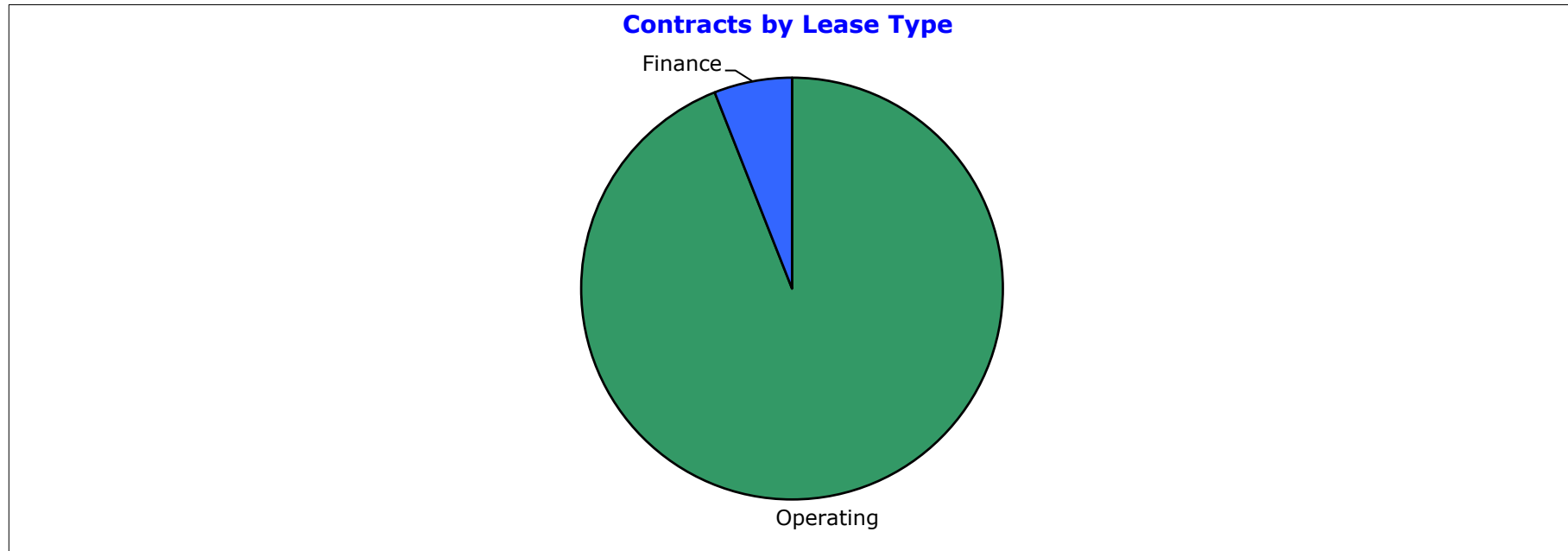
**FP Ignition 2017-B Trust
as at 31 August 2017**

Portfolio Summary	
Portfolio size	\$210,700,088
Number of contracts	7,690
Number of obligors	1,967
Minimum implied margin incl. hedge rate (p.a.)	10.20%
Average contract balance (current)	\$27,399
Maximum contract balance (current)	\$275,697
Average contract balance (original)	\$37,242
Maximum contract balance (original)	\$323,645
Weighted average total contract term (months)	42.93
Weighted average seasoning (months)	21.96
Weighted average remaining term (months)	20.95
Maximum remaining term (months)	79.04
Weighted average residual (current)	68.65%
Weighted average residual (original)	50.51%
Maximum residual (original)	95.46%

FP Ignition 2017-B Trust
as at 31 August 2017

Contracts by Lease Type

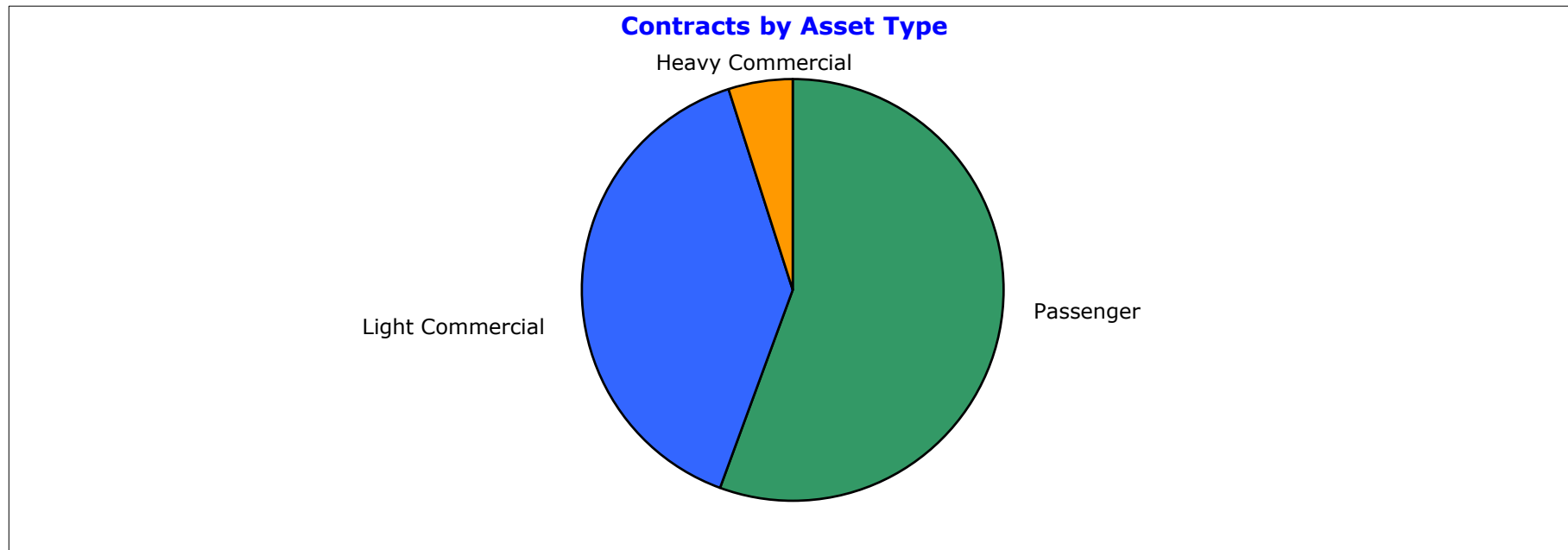
Lease Category	Current Lease Receivable (CLR) (\$)	CLR / Total Portfolio (%)	Contracts No.	Contracts No. / Total Portfolio (%)
Operating	198,100,190	94.02%	7,421	96.50%
Finance	12,599,899	5.98%	269	3.50%
Grand Total	210,700,088	100.00%	7,690	100.00%



**FP Ignition 2017-B Trust
as at 31 August 2017**

Contracts by Asset Type

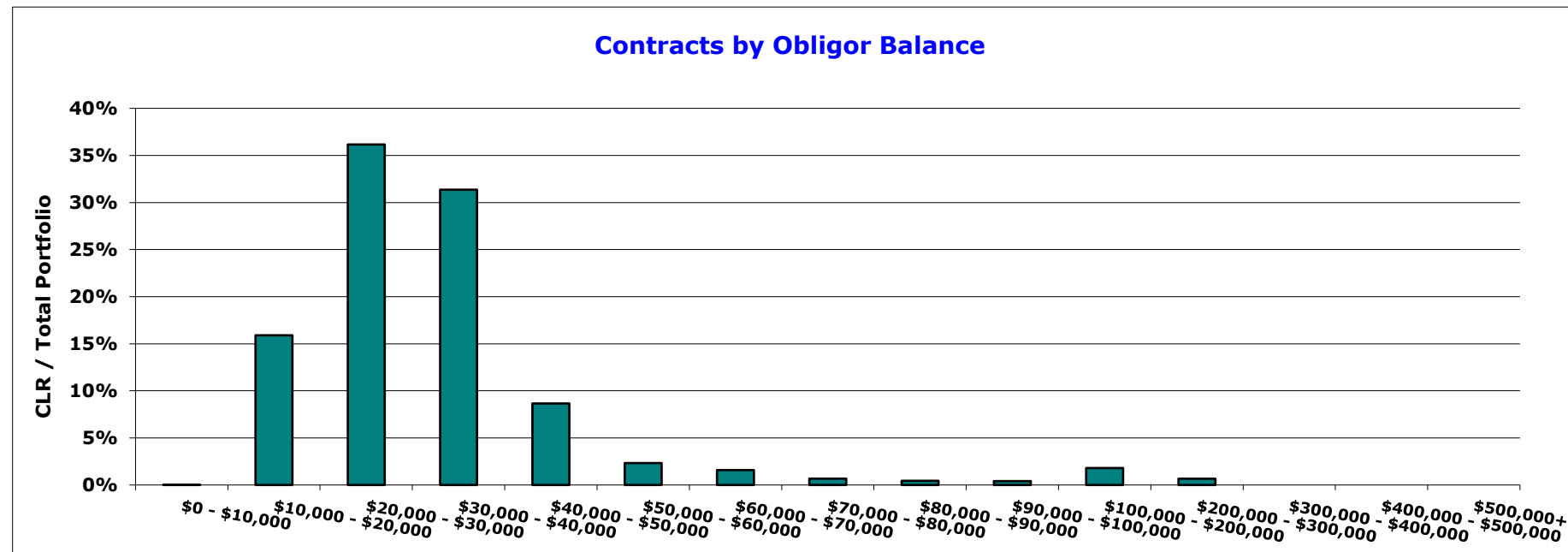
Asset Type	Current Lease Receivable (CLR) (\$)	CLR / Total Portfolio (%)	Contracts No.	Contracts No. / Total Portfolio (%)
Passenger	117,153,625	55.60%	4,829	62.80%
Light Commercial	83,172,044	39.47%	2,728	35.47%
Heavy Commercial	10,374,419	4.92%	133	1.73%
Grand Total	210,700,088	100.00%	7,690	100.00%



**FP Ignition 2017-B Trust
as at 31August 2017**

Contracts by Obligor Balance

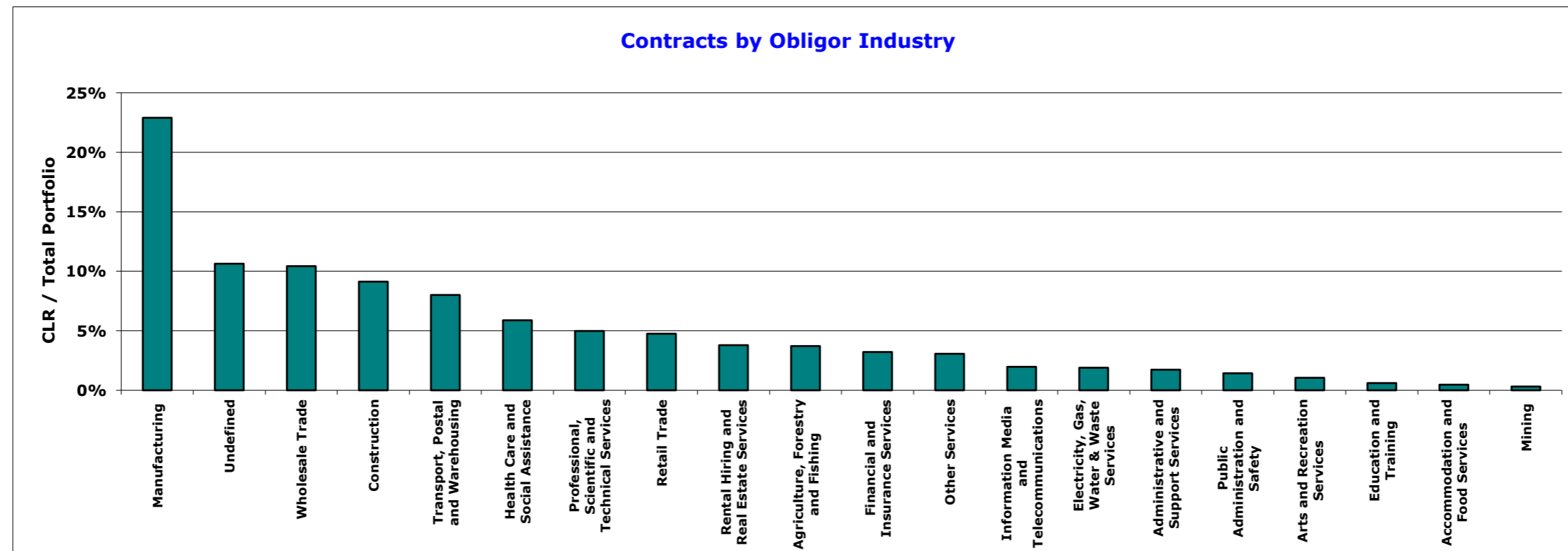
Obligor Balance	Current Lease Receivable (CLR) (\$)	CLR / Total Portfolio (%)	Contracts No.	Contracts No. / Total Portfolio (%)
\$0 - \$10,000	19,656	0.01%	2	0.03%
\$10,000 - \$20,000	33,499,222	15.90%	2,081	27.06%
\$20,000 - \$30,000	76,192,064	36.16%	3,053	39.70%
\$30,000 - \$40,000	66,073,026	31.36%	1,926	25.05%
\$40,000 - \$50,000	18,240,142	8.66%	414	5.38%
\$50,000 - \$60,000	4,907,865	2.33%	91	1.18%
\$60,000 - \$70,000	3,340,427	1.59%	51	0.66%
\$70,000 - \$80,000	1,419,613	0.67%	19	0.25%
\$80,000 - \$90,000	939,705	0.45%	11	0.14%
\$90,000 - \$100,000	868,406	0.41%	9	0.12%
\$100,000 - \$200,000	3,794,279	1.80%	27	0.35%
\$200,000 - \$300,000	1,405,683	0.67%	6	0.08%
\$300,000 - \$400,000	-	0.00%	-	0.00%
\$400,000 - \$500,000	-	0.00%	-	0.00%
\$500,000+	-	0.00%	-	0.00%
Grand Total	210,700,088	100.00%	7,690	100.00%



**FP Ignition 2017-B Trust
as at 31 August 2017**

Contracts by Obligor Industry

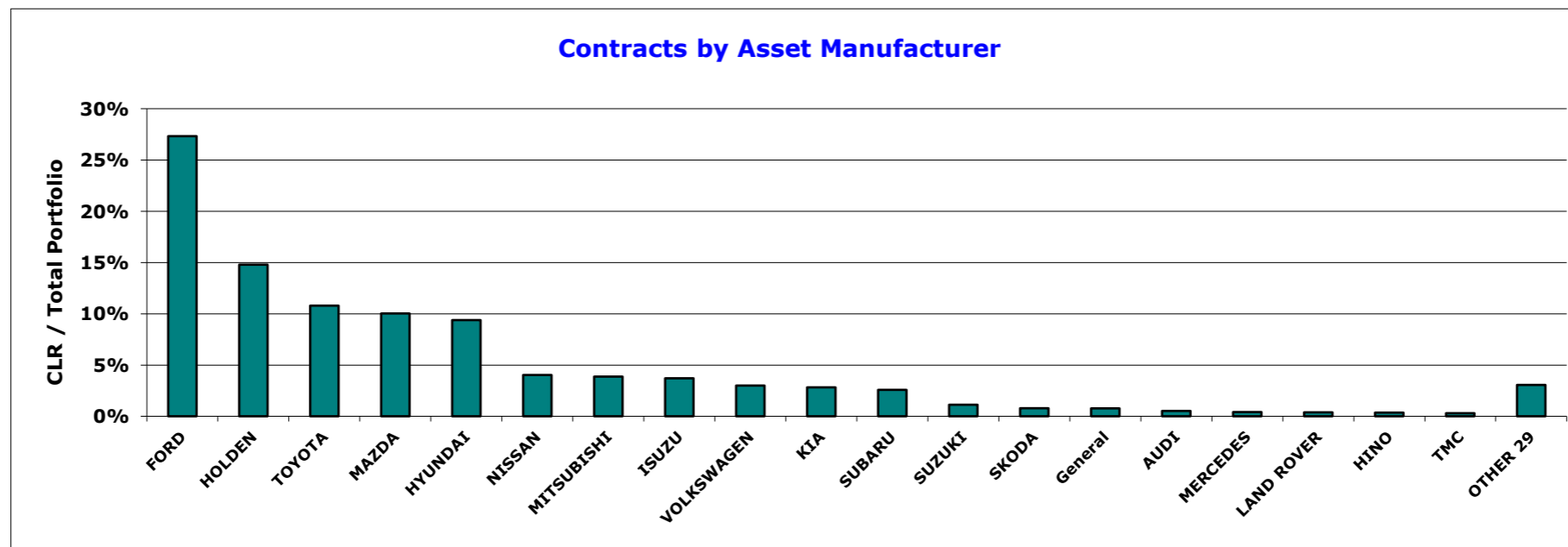
Industry Sector	Current Lease Receivable (CLR) (\$)	CLR / Total Portfolio (%)	Contracts No.	Contracts No. / Total Portfolio (%)
Manufacturing	48,245,456	22.90%	1,767	22.98%
Undefined	22,408,062	10.64%	700	9.10%
Wholesale Trade	21,976,483	10.43%	803	10.44%
Construction	19,238,791	9.13%	656	8.53%
Transport, Postal and Warehousing	16,876,040	8.01%	542	7.05%
Health Care and Social Assistance	12,401,562	5.89%	584	7.59%
Professional, Scientific and Technical Services	10,500,076	4.98%	379	4.93%
Retail Trade	10,018,583	4.75%	404	5.25%
Rental Hiring and Real Estate Services	7,990,153	3.79%	327	4.25%
Agriculture, Forestry and Fishing	7,831,629	3.72%	267	3.47%
Financial and Insurance Services	6,776,899	3.22%	262	3.41%
Other Services	6,462,188	3.07%	222	2.89%
Information Media and Telecommunications	4,159,458	1.97%	197	2.56%
Electricity, Gas, Water & Waste Services	3,994,040	1.90%	125	1.63%
Administrative and Support Services	3,652,283	1.73%	117	1.52%
Public Administration and Safety	3,013,566	1.43%	145	1.89%
Arts and Recreation Services	2,210,711	1.05%	93	1.21%
Education and Training	1,280,083	0.61%	49	0.64%
Accommodation and Food Services	995,861	0.47%	32	0.42%
Mining	668,163	0.32%	19	0.25%
Grand Total	210,700,088	100.00%	7,690	100.00%



FP Ignition 2017-B Trust
as at 31 August 2017

Contracts by Asset Manufacturer

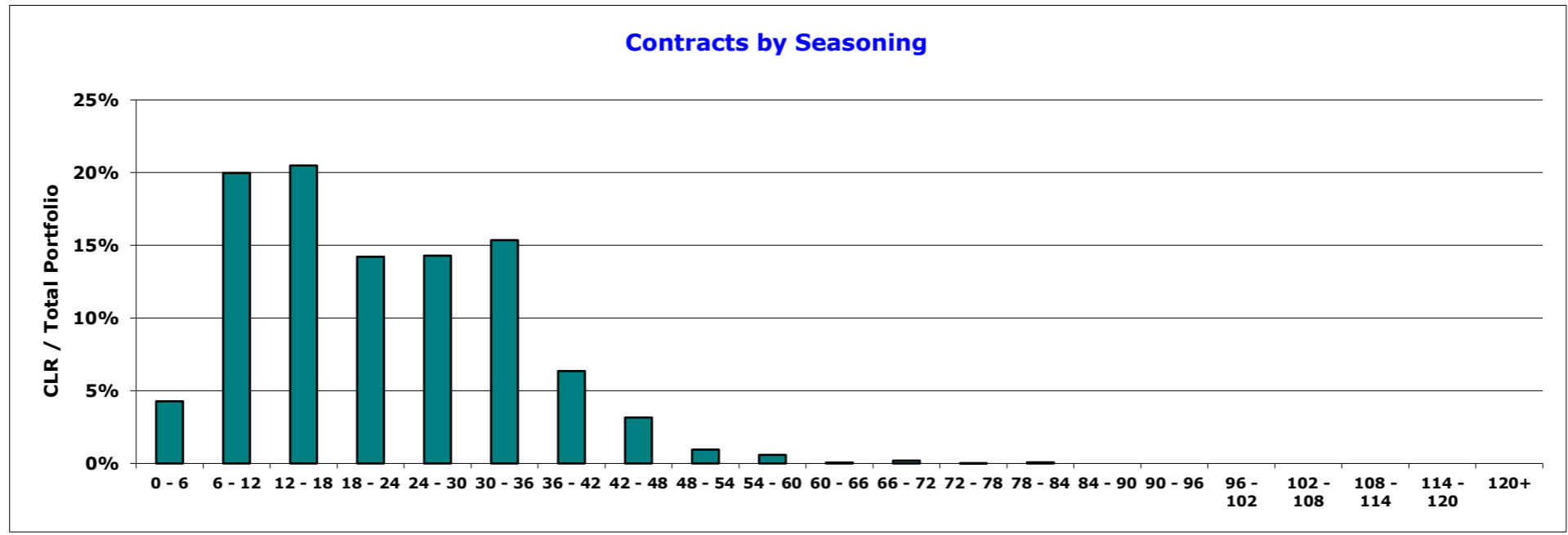
Manufacturer	Current Lease Receivable (CLR) (\$)	CLR / Total Portfolio (%)	Contracts No.	Contracts No. / Total Portfolio (%)
FORD	57,560,217	27.32%	1,870	24.32%
HOLDEN	31,155,592	14.79%	1,253	16.29%
TOYOTA	22,731,381	10.79%	868	11.29%
MAZDA	21,127,206	10.03%	865	11.25%
HYUNDAI	19,764,871	9.38%	854	11.11%
NISSAN	8,479,595	4.02%	334	4.34%
MITSUBISHI	8,154,554	3.87%	376	4.89%
ISUZU	7,806,878	3.71%	193	2.51%
VOLKSWAGEN	6,310,385	2.99%	206	2.68%
KIA	5,941,161	2.82%	219	2.85%
SUBARU	5,430,285	2.58%	205	2.67%
SUZUKI	2,368,985	1.12%	155	2.02%
SKODA	1,652,591	0.78%	71	0.92%
General	1,625,177	0.77%	15	0.20%
AUDI	1,097,546	0.52%	22	0.29%
MERCEDES	863,974	0.41%	21	0.27%
LAND ROVER	806,001	0.38%	15	0.20%
HINO	750,362	0.36%	7	0.09%
TMC	632,272	0.30%	6	0.08%
OTHER 29	6,441,056	3.06%	135	1.76%
Grand Total	210,700,088	100.00%	7,690	100.00%



**FP Ignition 2017-B Trust
as at 31 August 2017**

Contracts by Seasoning

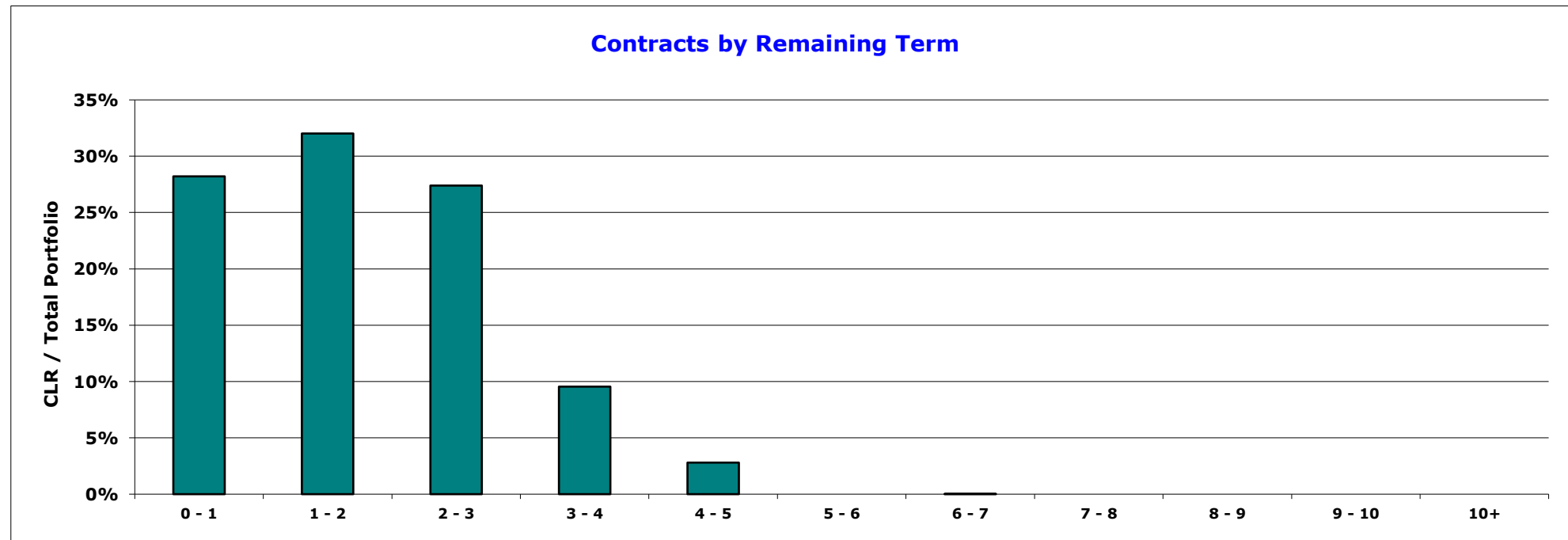
Seasoning Band Mths	Current Lease Receivable (CLR) (\$)	CLR / Total Portfolio (%)	Contracts No.	Contracts No. / Total Portfolio (%)
0 - 6	9,011,365	4.28%	254	3.30%
6 - 12	42,081,985	19.97%	1,316	17.11%
12 - 18	43,168,609	20.49%	1,309	17.02%
18 - 24	29,953,305	14.22%	1,049	13.64%
24 - 30	30,110,575	14.29%	1,195	15.54%
30 - 36	32,355,362	15.36%	1,457	18.95%
36 - 42	13,390,670	6.36%	598	7.78%
42 - 48	6,657,233	3.16%	317	4.12%
48 - 54	2,005,930	0.95%	91	1.18%
54 - 60	1,240,208	0.59%	66	0.86%
60 - 66	130,395	0.06%	7	0.09%
66 - 72	412,377	0.20%	21	0.27%
72 - 78	16,515	0.01%	1	0.01%
78 - 84	165,557	0.08%	9	0.12%
84 - 90	-	0.00%	-	0.00%
90 - 96	-	0.00%	-	0.00%
96 - 102	-	0.00%	-	0.00%
102 - 108	-	0.00%	-	0.00%
108 - 114	-	0.00%	-	0.00%
114 - 120	-	0.00%	-	0.00%
120+	-	0.00%	-	0.00%
Grand Total	210,700,088	100.00%	7,690	100.00%



**FP Ignition 2017-B Trust
as at 31August 2017**

Contracts by Remaining Term

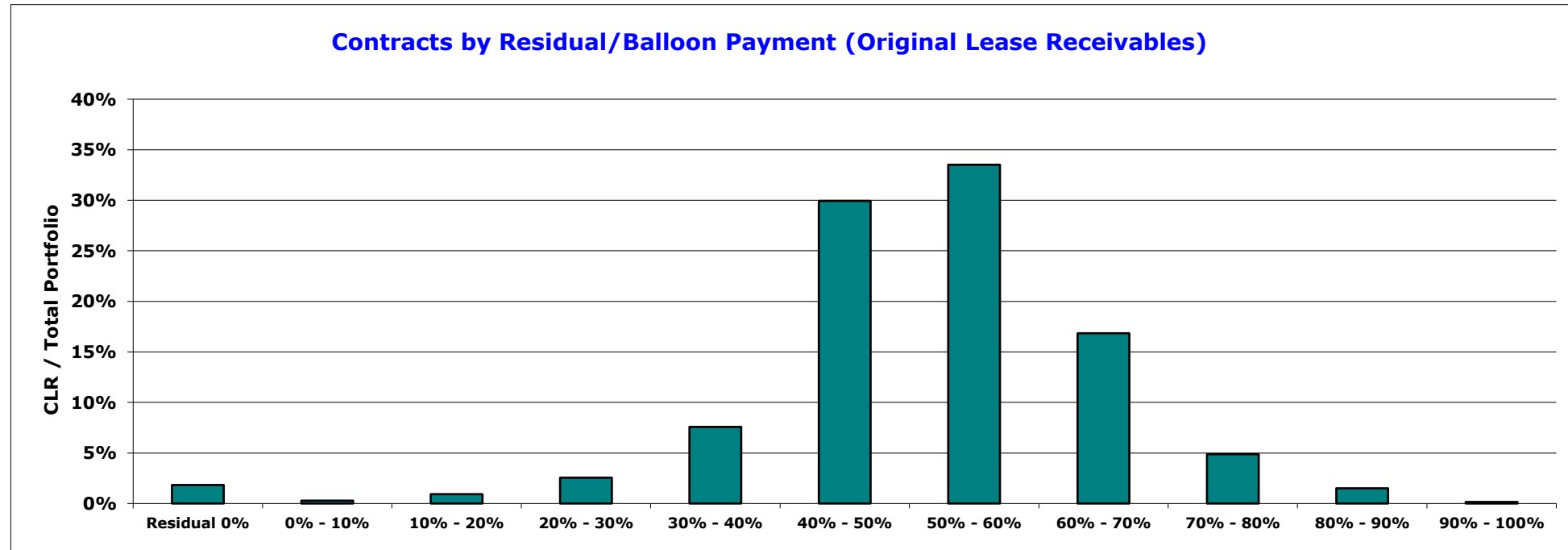
Remaining Term Band Yrs	Current Lease Receivable (CLR) (\$)	CLR / Total Portfolio (%)	Contracts No.	Contracts No. / Total Portfolio (%)
0 - 1	59,439,411	28.21%	2,788	36.25%
1 - 2	67,458,518	32.02%	2,505	32.57%
2 - 3	57,722,440	27.40%	1,793	23.32%
3 - 4	20,116,083	9.55%	502	6.53%
4 - 5	5,903,402	2.80%	101	1.31%
5 - 6	-	0.00%	-	0.00%
6 - 7	60,235	0.03%	1	0.01%
7 - 8	-	0.00%	-	0.00%
8 - 9	-	0.00%	-	0.00%
9 - 10	-	0.00%	-	0.00%
10+	-	0.00%	-	0.00%
Grand Total	210,700,088	100.00%	7,690	100.00%



**FP Ignition 2017-B Trust
as at 31 August 2017**

Contracts by Residual/Balloon Payment (Original Lease Receivables)

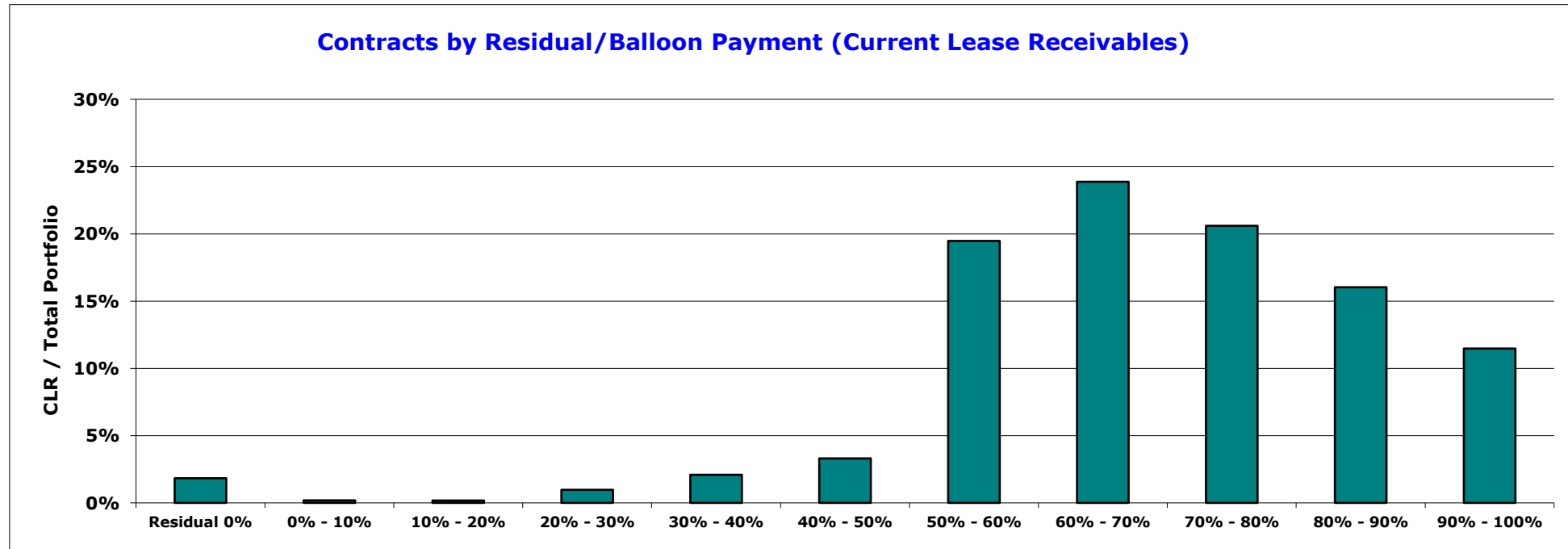
Residual Band (original)	Current Lease Receivable (CLR) (\$)	CLR / Total Portfolio (%)	Contracts No.	Contracts No. / Total Portfolio (%)
Residual 0%	3,859,388	1.83%	92	1.20%
0% - 10%	594,251	0.28%	18	0.23%
10% - 20%	1,942,406	0.92%	40	0.52%
20% - 30%	5,383,920	2.56%	124	1.61%
30% - 40%	15,973,130	7.58%	665	8.65%
40% - 50%	63,079,160	29.94%	2,428	31.57%
50% - 60%	70,619,134	33.52%	2,575	33.49%
60% - 70%	35,486,459	16.84%	1,206	15.68%
70% - 80%	10,274,341	4.88%	389	5.06%
80% - 90%	3,166,086	1.50%	140	1.82%
90% - 100%	321,813	0.15%	13	0.17%
Grand Total	210,700,088	100.00%	7,690	100.00%



**FP Ignition 2017-B Trust
as at 31 August 2017**

Contracts by Residual/Balloon Payment (Current Lease Receivables)

Residual Band (current)	Current Lease Receivable (CLR) (\$)	CLR / Total Portfolio (%)	Contracts No.	Contracts No. / Total Portfolio (%)
Residual 0%	3,859,388	1.83%	92	1.20%
0% - 10%	393,155	0.19%	4	0.05%
10% - 20%	370,070	0.18%	18	0.23%
20% - 30%	2,046,525	0.97%	35	0.46%
30% - 40%	4,399,436	2.09%	75	0.98%
40% - 50%	6,963,555	3.30%	197	2.56%
50% - 60%	41,030,148	19.47%	1,328	17.27%
60% - 70%	50,300,105	23.87%	1,701	22.12%
70% - 80%	43,391,889	20.59%	1,675	21.78%
80% - 90%	33,773,536	16.03%	1,411	18.35%
90% - 100%	24,172,281	11.47%	1,154	15.01%
Grand Total	210,700,088	100.00%	7,690	100.00%



FP Ignition 2017-B Trust
as at 31 August 2017

Contracts by New/Used

New/Used	Current Lease Receivable (CLR) (\$)	CLR / Total Portfolio (%)	Contracts No.	Contracts No. / Total Portfolio (%)
New	201,606,837	95.68%	7,345	95.51%
Used	9,093,251	4.32%	345	4.49%
Grand Total	210,700,088	100.00%	7,690	100.00%

