

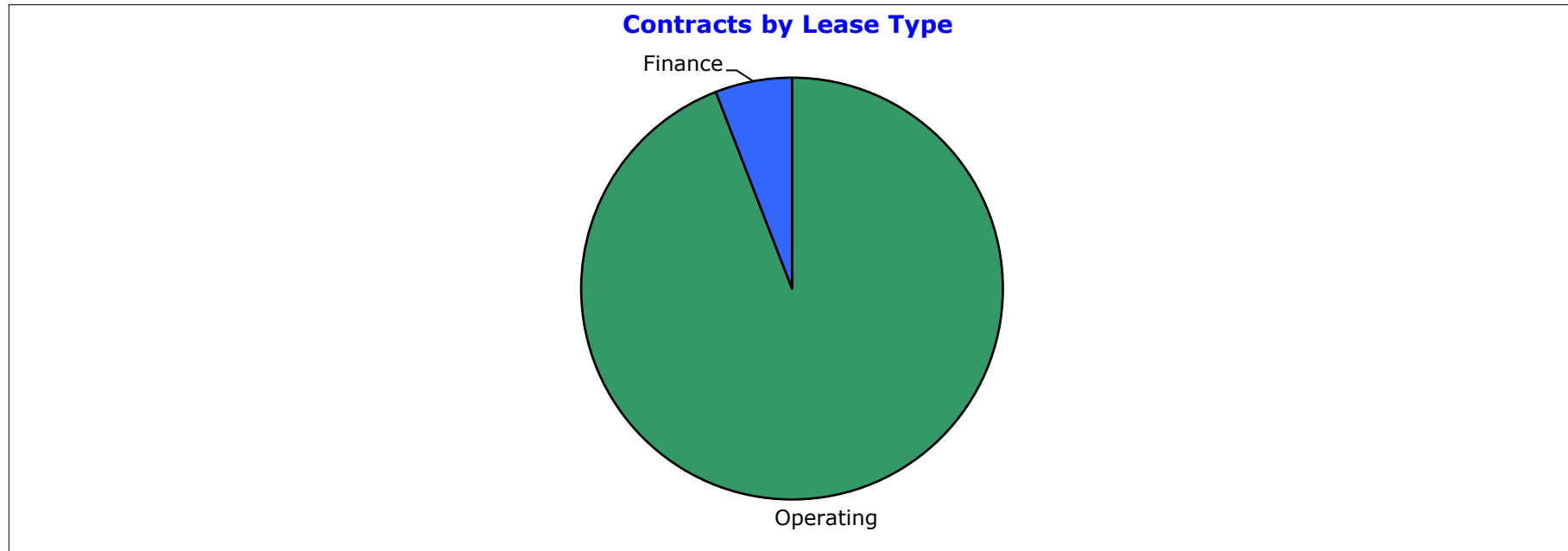
**FP Ignition 2017-B Trust  
as at 31 December 2017**

<b>Portfolio Summary</b>	
Portfolio size	\$185,729,238
Number of contracts	7,120
Number of obligors	1,863
Minimum implied margin incl. hedge rate (p.a.)	10.43%
Average contract balance (current)	\$26,086
Maximum contract balance (current)	\$261,697
Average contract balance (original)	\$37,157
Maximum contract balance (original)	\$323,645
Weighted average total contract term (months)	43.36
Weighted average seasoning (months)	25.12
Weighted average remaining term (months)	18.28
Maximum remaining term (months)	75.02
Weighted average residual (current)	71.69%
Weighted average residual (original)	50.33%
Maximum residual (original)	95.46%

FP Ignition 2017-B Trust  
as at 31 December 2017

Contracts by Lease Type

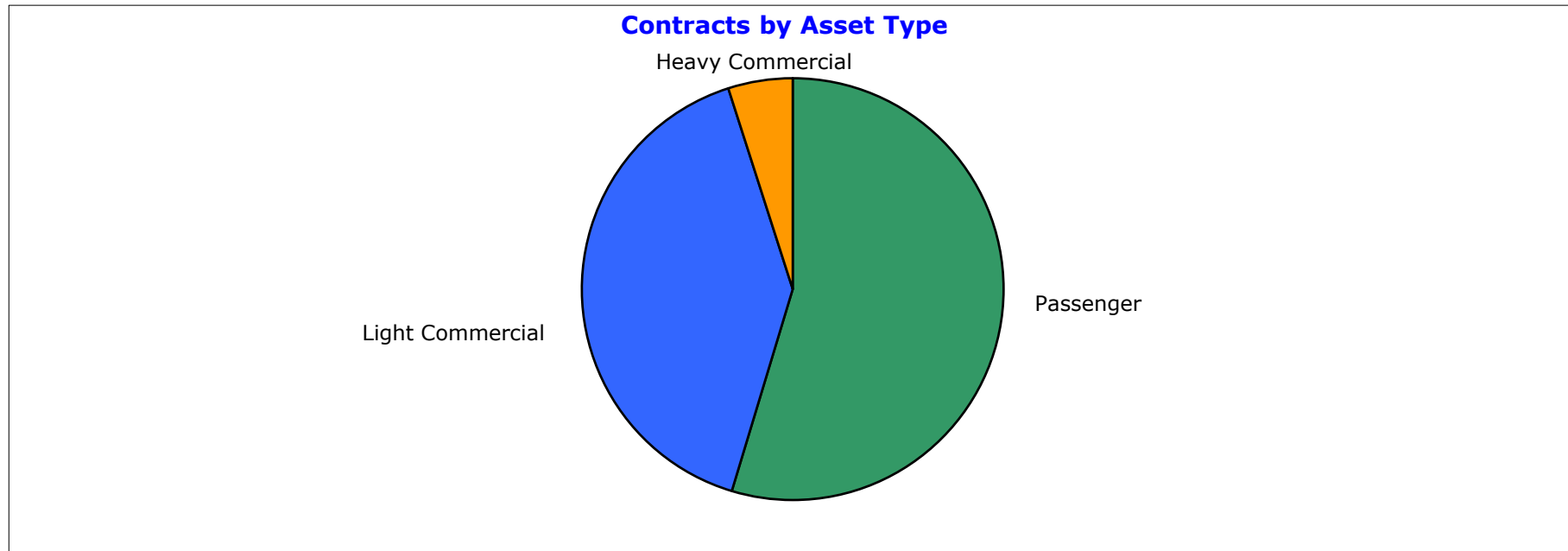
Lease Category	Current Lease Receivable (CLR) (\$)	CLR / Total Portfolio (%)	Contracts No.	Contracts No. / Total Portfolio (%)
Operating	174,796,891	94.11%	6,864	96.40%
Finance	10,932,347	5.89%	256	3.60%
<b>Grand Total</b>	<b>185,729,238</b>	<b>100.00%</b>	<b>7,120</b>	<b>100.00%</b>



**FP Ignition 2017-B Trust  
as at 31 December 2017**

**Contracts by Asset Type**

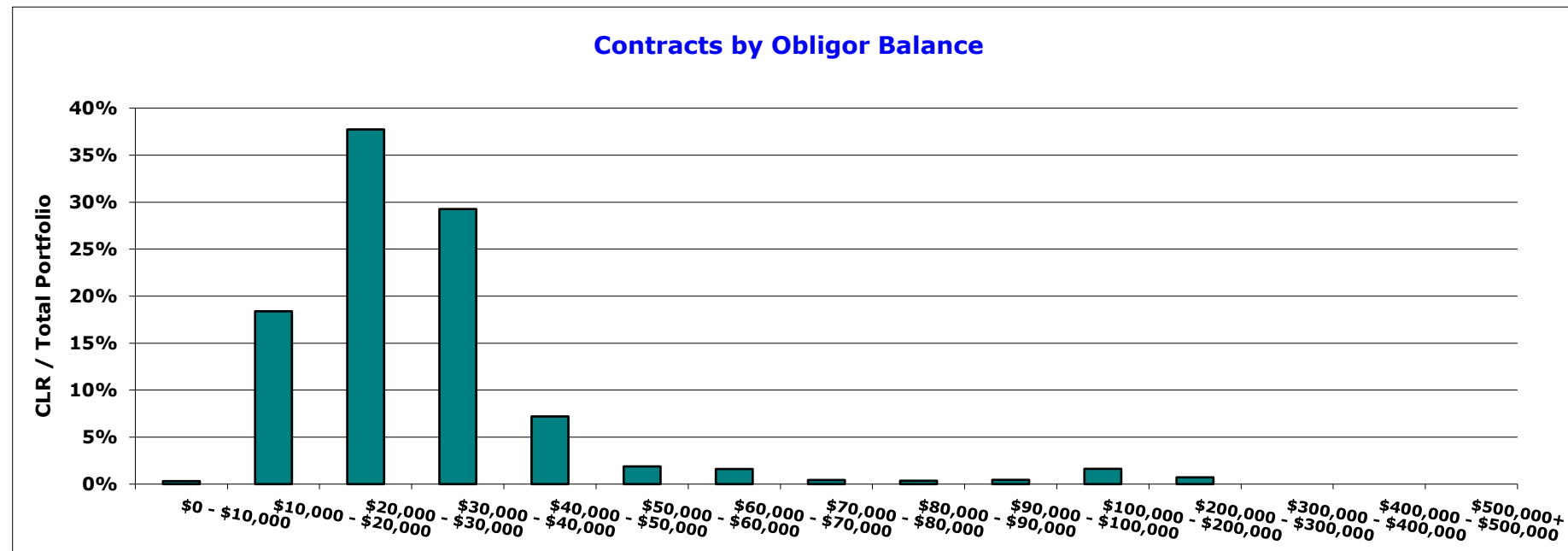
<b>Asset Type</b>	<b>Current Lease Receivable (CLR) (\$)</b>	<b>CLR / Total Portfolio (%)</b>	<b>Contracts No.</b>	<b>Contracts No. / Total Portfolio (%)</b>
Passenger	101,533,437	54.67%	4,440	62.36%
Light Commercial	75,011,381	40.39%	2,554	35.87%
Heavy Commercial	9,184,419	4.95%	126	1.77%
<b>Grand Total</b>	<b>185,729,238</b>	<b>100.00%</b>	<b>7,120</b>	<b>100.00%</b>



**FP Ignition 2017-B Trust  
as at 31 December 2017**

**Contracts by Obligor Balance**

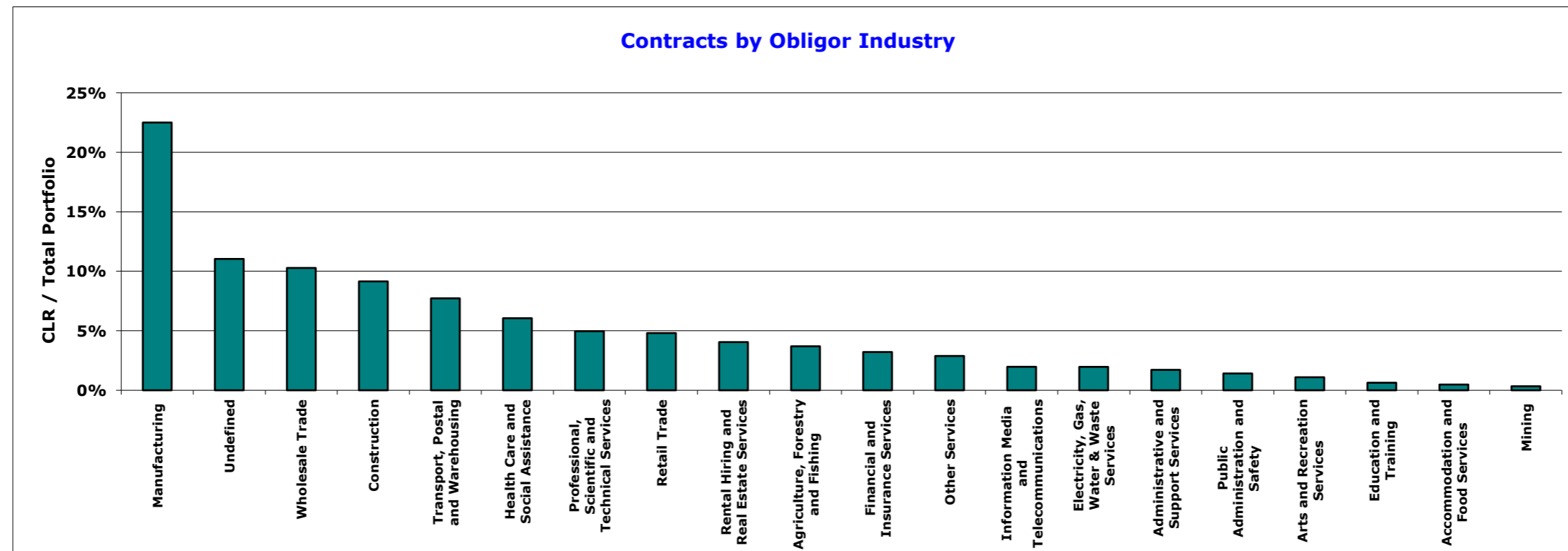
<b>Obligor Balance</b>	<b>Current Lease Receivable (CLR) (\$)</b>	<b>CLR / Total Portfolio (%)</b>	<b>Contracts No.</b>	<b>Contracts No. / Total Portfolio (%)</b>
\$0 - \$10,000	591,568	0.32%	63	0.88%
\$10,000 - \$20,000	34,155,491	18.39%	2,172	30.51%
\$20,000 - \$30,000	70,084,540	37.73%	2,815	39.54%
\$30,000 - \$40,000	54,358,335	29.27%	1,599	22.46%
\$40,000 - \$50,000	13,376,714	7.20%	304	4.27%
\$50,000 - \$60,000	3,499,104	1.88%	65	0.91%
\$60,000 - \$70,000	2,982,185	1.61%	46	0.65%
\$70,000 - \$80,000	815,069	0.44%	11	0.15%
\$80,000 - \$90,000	666,206	0.36%	8	0.11%
\$90,000 - \$100,000	842,235	0.45%	9	0.13%
\$100,000 - \$200,000	3,020,182	1.63%	22	0.31%
\$200,000 - \$300,000	1,337,608	0.72%	6	0.08%
\$300,000 - \$400,000	-	0.00%	-	0.00%
\$400,000 - \$500,000	-	0.00%	-	0.00%
\$500,000+	-	0.00%	-	0.00%
<b>Grand Total</b>	<b>185,729,238</b>	<b>100.00%</b>	<b>7,120</b>	<b>100.00%</b>



FP Ignition 2017-B Trust  
as at 31 December 2017

Contracts by Obligor Industry

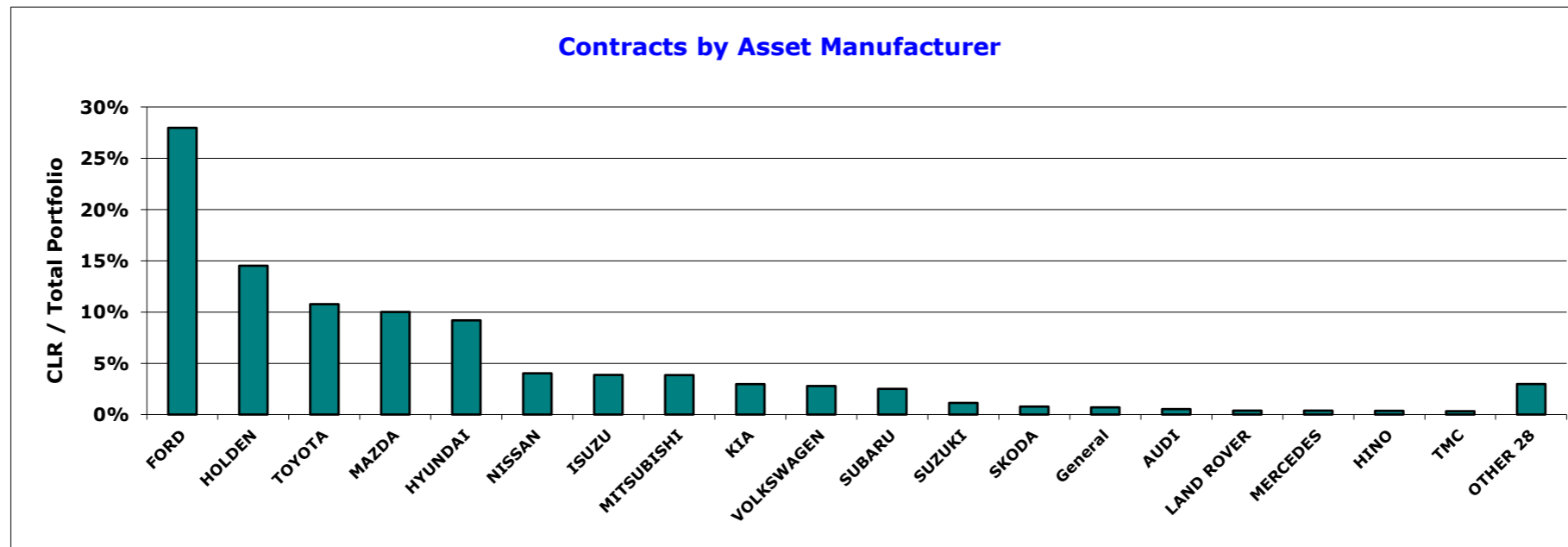
Industry Sector	Current Lease Receivable (CLR) (\$)	CLR / Total Portfolio (%)	Contracts No.	Contracts No. / Total Portfolio (%)
Manufacturing	41,790,916	22.50%	1,620	22.75%
Undefined	20,500,449	11.04%	668	9.38%
Wholesale Trade	19,093,823	10.28%	730	10.25%
Construction	16,993,997	9.15%	599	8.41%
Transport, Postal and Warehousing	14,350,585	7.73%	478	6.71%
Health Care and Social Assistance	11,252,636	6.06%	564	7.92%
Professional, Scientific and Technical Services	9,217,641	4.96%	347	4.87%
Retail Trade	8,931,794	4.81%	386	5.42%
Rental Hiring and Real Estate Services	7,521,063	4.05%	324	4.55%
Agriculture, Forestry and Fishing	6,867,820	3.70%	243	3.41%
Financial and Insurance Services	5,971,647	3.22%	246	3.46%
Other Services	5,356,163	2.88%	188	2.64%
Information Media and Telecommunications	3,668,468	1.98%	180	2.53%
Electricity, Gas, Water & Waste Services	3,656,839	1.97%	118	1.66%
Administrative and Support Services	3,190,085	1.72%	106	1.49%
Public Administration and Safety	2,624,753	1.41%	135	1.90%
Arts and Recreation Services	2,033,231	1.09%	91	1.28%
Education and Training	1,180,331	0.64%	48	0.67%
Accommodation and Food Services	897,210	0.48%	30	0.42%
Mining	629,788	0.34%	19	0.27%
<b>Grand Total</b>	<b>185,729,238</b>	<b>100.00%</b>	<b>7,120</b>	<b>100.00%</b>



FP Ignition 2017-B Trust  
as at 31 December 2017

Contracts by Asset Manufacturer

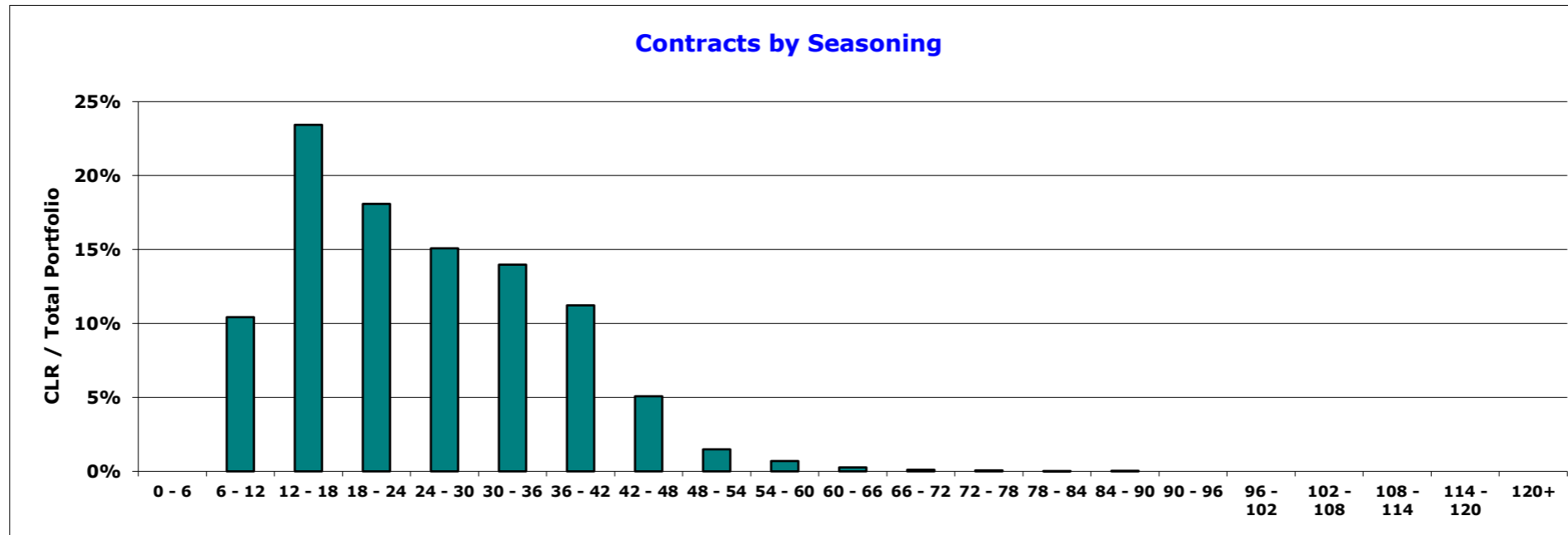
Manufacturer	Current Lease Receivable (CLR) (\$)	CLR / Total Portfolio (%)	Contracts No.	Contracts No. / Total Portfolio (%)
FORD	51,940,061	27.97%	1,756	24.66%
HOLDEN	26,958,370	14.51%	1,142	16.04%
TOYOTA	19,994,204	10.77%	797	11.19%
MAZDA	18,583,078	10.01%	796	11.18%
HYUNDAI	17,064,611	9.19%	789	11.08%
NISSAN	7,467,791	4.02%	308	4.33%
ISUZU	7,174,720	3.86%	187	2.63%
MITSUBISHI	7,144,193	3.85%	351	4.93%
KIA	5,508,946	2.97%	213	2.99%
VOLKSWAGEN	5,166,013	2.78%	178	2.50%
SUBARU	4,654,927	2.51%	185	2.60%
SUZUKI	2,105,238	1.13%	146	2.05%
SKODA	1,443,913	0.78%	68	0.96%
General	1,303,725	0.70%	13	0.18%
AUDI	987,524	0.53%	21	0.29%
LAND ROVER	712,671	0.38%	14	0.20%
MERCEDES	712,107	0.38%	19	0.27%
HINO	677,826	0.36%	6	0.08%
TMC	604,109	0.33%	6	0.08%
OTHER 28	5,525,213	2.97%	125	1.76%
<b>Grand Total</b>	<b>185,729,238</b>	<b>100.00%</b>	<b>7,120</b>	<b>100.00%</b>



**FP Ignition 2017-B Trust  
as at 31 December 2017**

**Contracts by Seasoning**

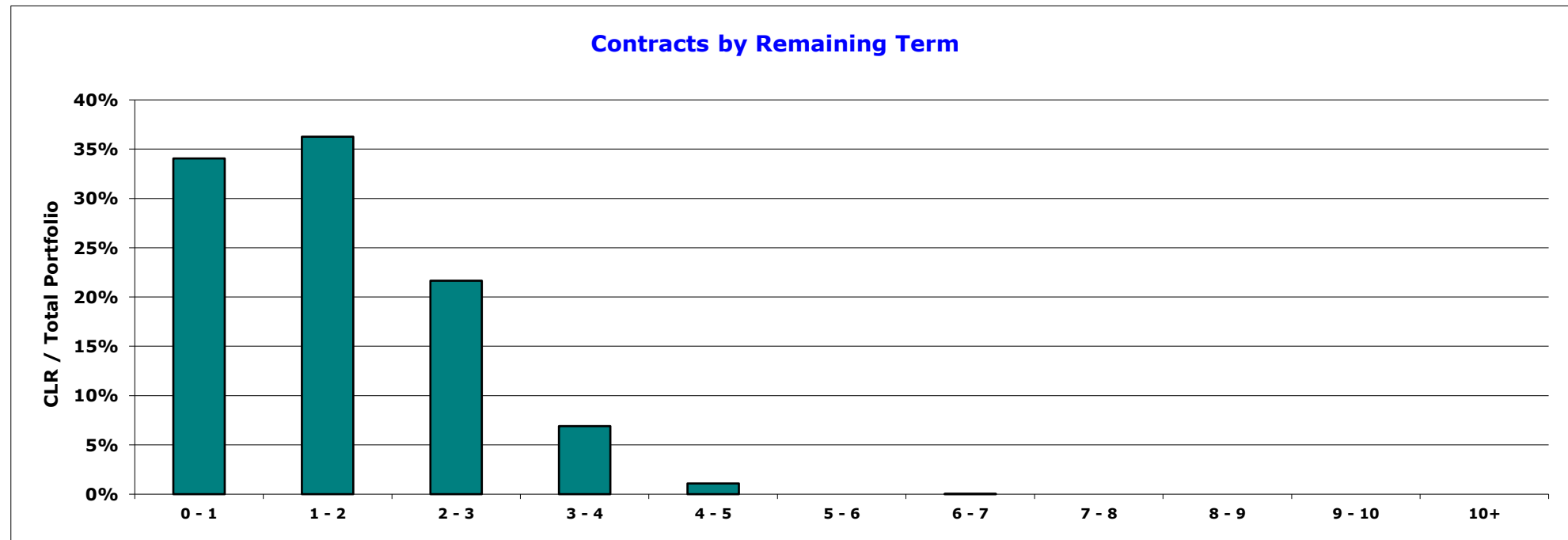
Seasoning Band Mths	Current Lease Receivable (CLR) (\$)	CLR / Total Portfolio (%)	Contracts No.	Contracts No. / Total Portfolio (%)
0 - 6	-	0.00%	-	0.00%
6 - 12	19,364,160	10.43%	626	8.79%
12 - 18	43,516,806	23.43%	1,372	19.27%
18 - 24	33,590,540	18.09%	1,153	16.19%
24 - 30	28,011,695	15.08%	1,098	15.42%
30 - 36	25,957,835	13.98%	1,136	15.96%
36 - 42	20,851,306	11.23%	1,015	14.26%
42 - 48	9,432,691	5.08%	472	6.63%
48 - 54	2,767,956	1.49%	131	1.84%
54 - 60	1,299,350	0.70%	64	0.90%
60 - 66	498,603	0.27%	28	0.39%
66 - 72	200,186	0.11%	13	0.18%
72 - 78	128,386	0.07%	6	0.08%
78 - 84	36,738	0.02%	2	0.03%
84 - 90	72,986	0.04%	4	0.06%
90 - 96	-	0.00%	-	0.00%
96 - 102	-	0.00%	-	0.00%
102 - 108	-	0.00%	-	0.00%
108 - 114	-	0.00%	-	0.00%
114 - 120	-	0.00%	-	0.00%
120+	-	0.00%	-	0.00%
<b>Grand Total</b>	<b>185,729,238</b>	<b>100.00%</b>	<b>7,120</b>	<b>100.00%</b>



**FP Ignition 2017-B Trust  
as at 31 December 2017**

**Contracts by Remaining Term**

<b>Remaining Term Band Yrs</b>	<b>Current Lease Receivable (CLR) (\$)</b>	<b>CLR / Total Portfolio (%)</b>	<b>Contracts No.</b>	<b>Contracts No. / Total Portfolio (%)</b>
0 - 1	63,257,396	34.06%	3,105	43.61%
1 - 2	67,352,369	36.26%	2,419	33.97%
2 - 3	40,220,145	21.66%	1,285	18.05%
3 - 4	12,823,059	6.90%	272	3.82%
4 - 5	2,017,932	1.09%	38	0.53%
5 - 6	-	0.00%	-	0.00%
6 - 7	58,338	0.03%	1	0.01%
7 - 8	-	0.00%	-	0.00%
8 - 9	-	0.00%	-	0.00%
9 - 10	-	0.00%	-	0.00%
10+	-	0.00%	-	0.00%
<b>Grand Total</b>	<b>185,729,238</b>	<b>100.00%</b>	<b>7,120</b>	<b>100.00%</b>

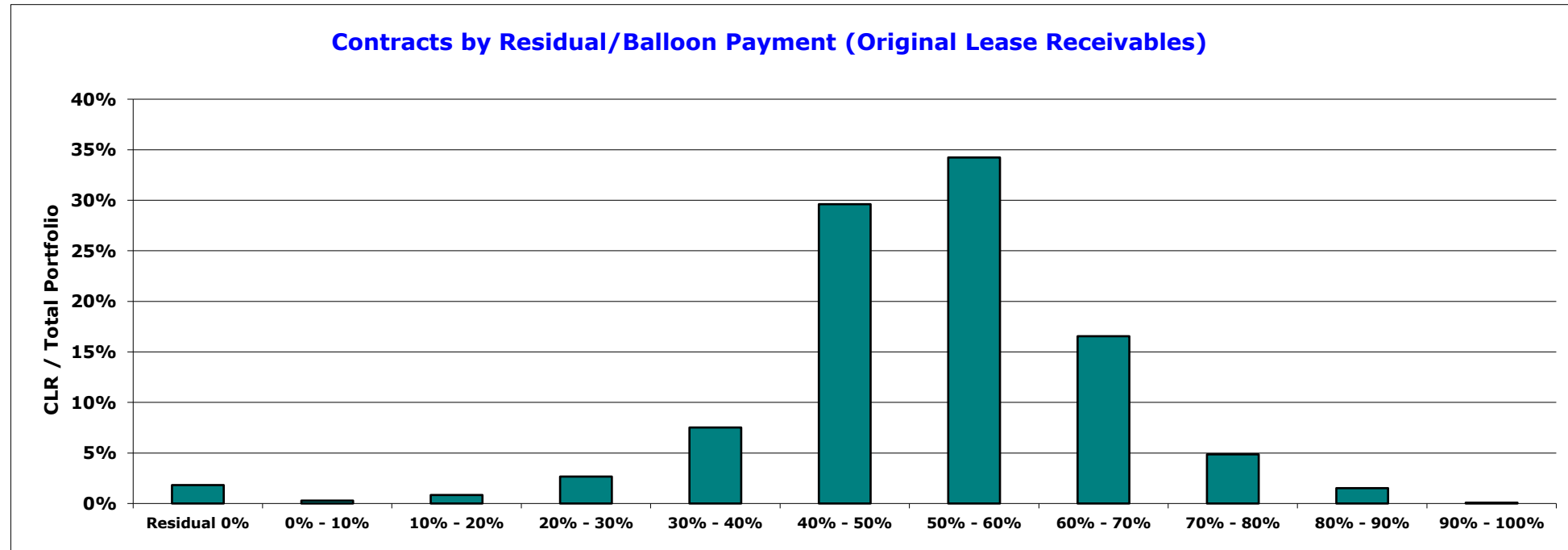




**FP Ignition 2017-B Trust  
as at 31 December 2017**

**Contracts by Residual/Balloon Payment (Original Lease Receivables)**

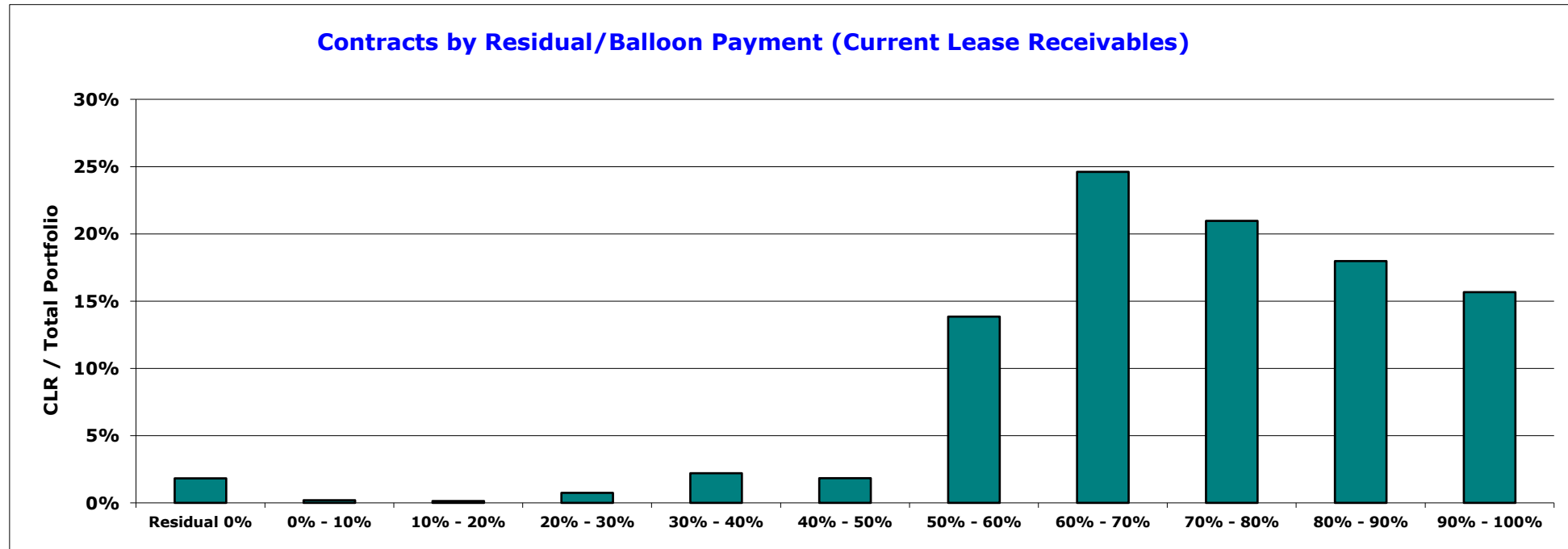
<b>Residual Band (original)</b>	<b>Current Lease Receivable (CLR) (\$)</b>	<b>CLR / Total Portfolio (%)</b>	<b>Contracts No.</b>	<b>Contracts No. / Total Portfolio (%)</b>
Residual 0%	3,386,762	1.82%	90	1.26%
0% - 10%	532,940	0.29%	17	0.24%
10% - 20%	1,560,638	0.84%	37	0.52%
20% - 30%	4,948,598	2.66%	121	1.70%
30% - 40%	13,966,814	7.52%	622	8.74%
40% - 50%	54,998,786	29.61%	2,244	31.52%
50% - 60%	63,585,139	34.24%	2,425	34.06%
60% - 70%	30,739,632	16.55%	1,086	15.25%
70% - 80%	9,032,987	4.86%	343	4.82%
80% - 90%	2,822,351	1.52%	130	1.83%
90% - 100%	154,591	0.08%	5	0.07%
<b>Grand Total</b>	<b>185,729,238</b>	<b>100.00%</b>	<b>7,120</b>	<b>100.00%</b>



**FP Ignition 2017-B Trust  
as at 31 December 2017**

**Contracts by Residual/Balloon Payment (Current Lease Receivables)**

<b>Residual Band (current)</b>	<b>Current Lease Receivable (CLR) (\$)</b>	<b>CLR / Total Portfolio (%)</b>	<b>Contracts No.</b>	<b>Contracts No. / Total Portfolio (%)</b>
Residual 0%	3,386,762	1.82%	90	1.26%
0% - 10%	365,608	0.20%	4	0.06%
10% - 20%	253,344	0.14%	16	0.22%
20% - 30%	1,383,707	0.75%	25	0.35%
30% - 40%	4,093,222	2.20%	69	0.97%
40% - 50%	3,410,012	1.84%	96	1.35%
50% - 60%	25,716,705	13.85%	844	11.85%
60% - 70%	45,705,667	24.61%	1,587	22.29%
70% - 80%	38,937,245	20.96%	1,486	20.87%
80% - 90%	33,382,632	17.97%	1,467	20.60%
90% - 100%	29,094,334	15.66%	1,436	20.17%
<b>Grand Total</b>	<b>185,729,238</b>	<b>100.00%</b>	<b>7,120</b>	<b>100.00%</b>



FP Ignition 2017-B Trust  
as at 31 December 2017

Contracts by New/Used

New/Used	Current Lease Receivable (CLR) (\$)	CLR / Total Portfolio (%)	Contracts No.	Contracts No. / Total Portfolio (%)
New	178,238,057	95.97%	6,814	95.70%
Used	7,491,181	4.03%	306	4.30%
<b>Grand Total</b>	<b>185,729,238</b>	<b>100.00%</b>	<b>7,120</b>	<b>100.00%</b>

