

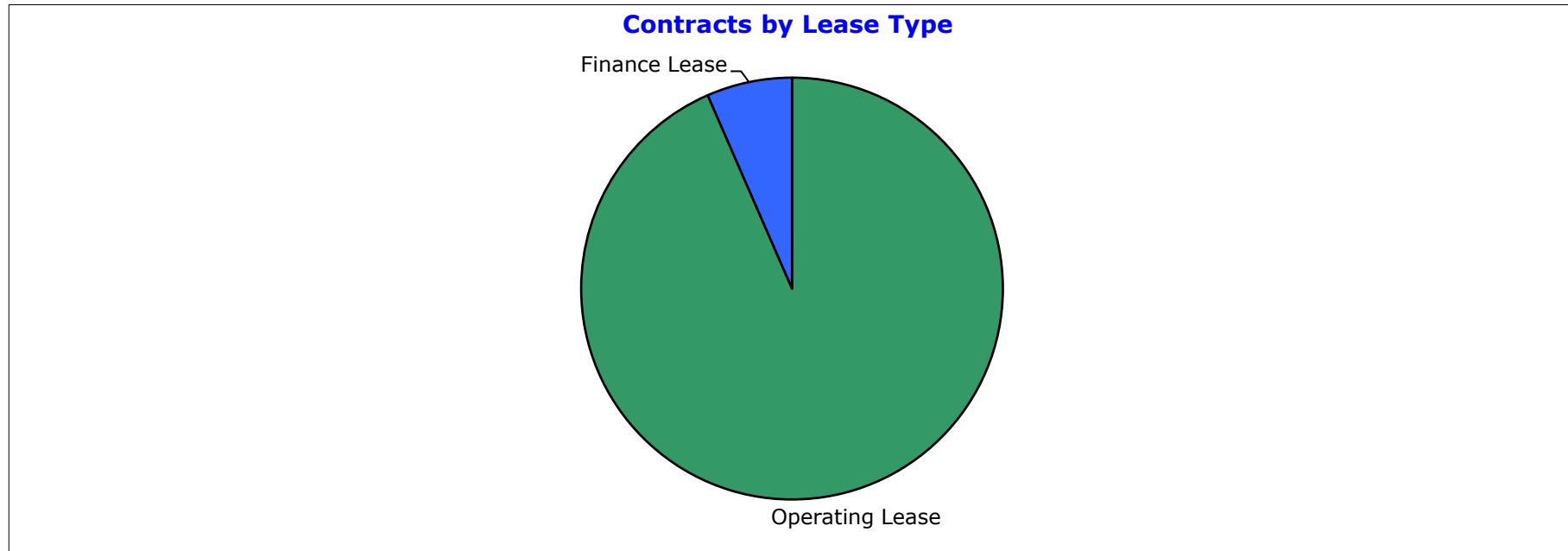
**FP Ignition 2017-B Trust
as at 31 December 2018**

Portfolio Summary	
Portfolio size	\$107,073,953
Number of contracts	4,504
Number of obligors	1,397
Minimum implied margin incl. hedge rate (p.a.)	11.38%
Average contract balance (current)	\$23,773
Maximum contract balance (current)	\$217,813
Average contract balance (original)	\$38,196
Maximum contract balance (original)	\$323,645
Weighted average total contract term (months)	44.39
Weighted average seasoning (months)	33.52
Weighted average remaining term (months)	12.32
Maximum remaining term (months)	63.02
Weighted average residual (current)	79.01%
Weighted average residual (original)	49.18%
Maximum residual (original)	94.39%

FP Ignition 2017-B Trust
as at 31 December 2018

Contracts by Lease Type

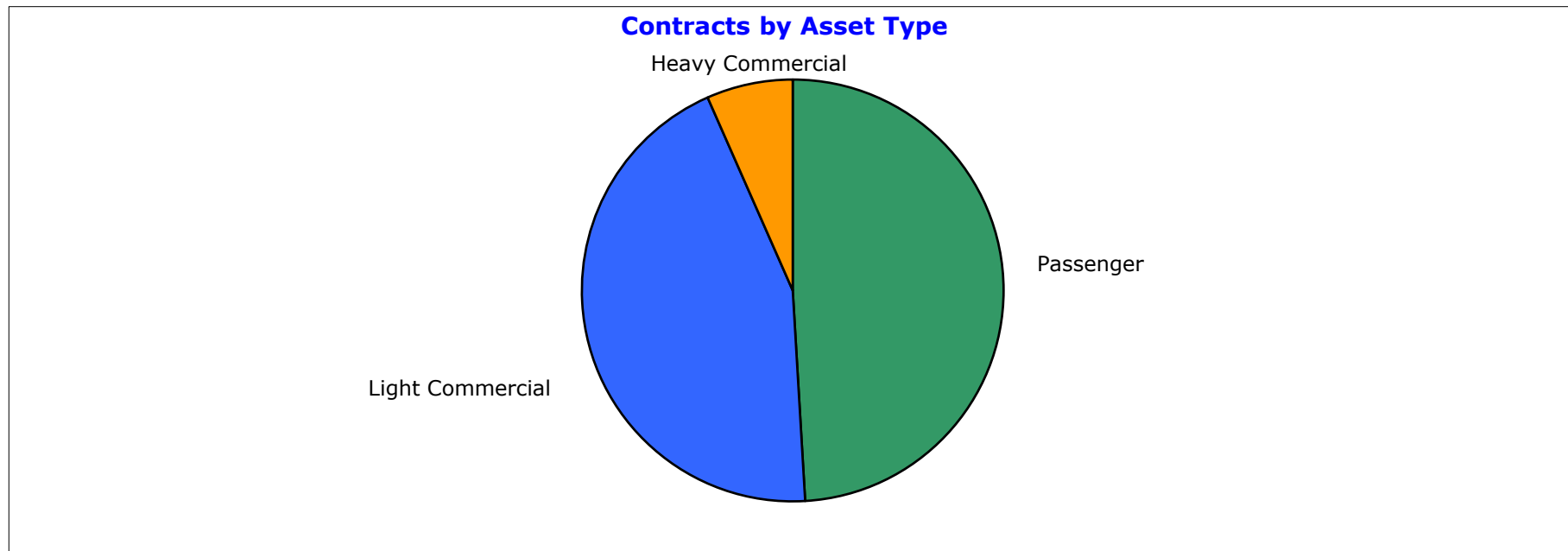
Lease Category	Current Lease Receivable (CLR) (\$)	CLR / Total Portfolio (%)	Contracts No.	Contracts No. / Total Portfolio (%)
Operating Lease	100,066,064	93.46%	4,300	95.47%
Finance Lease	7,007,889	6.54%	204	4.53%
Grand Total	107,073,953	100.00%	4,504	100.00%



**FP Ignition 2017-B Trust
as at 31 December 2018**

Contracts by Asset Type

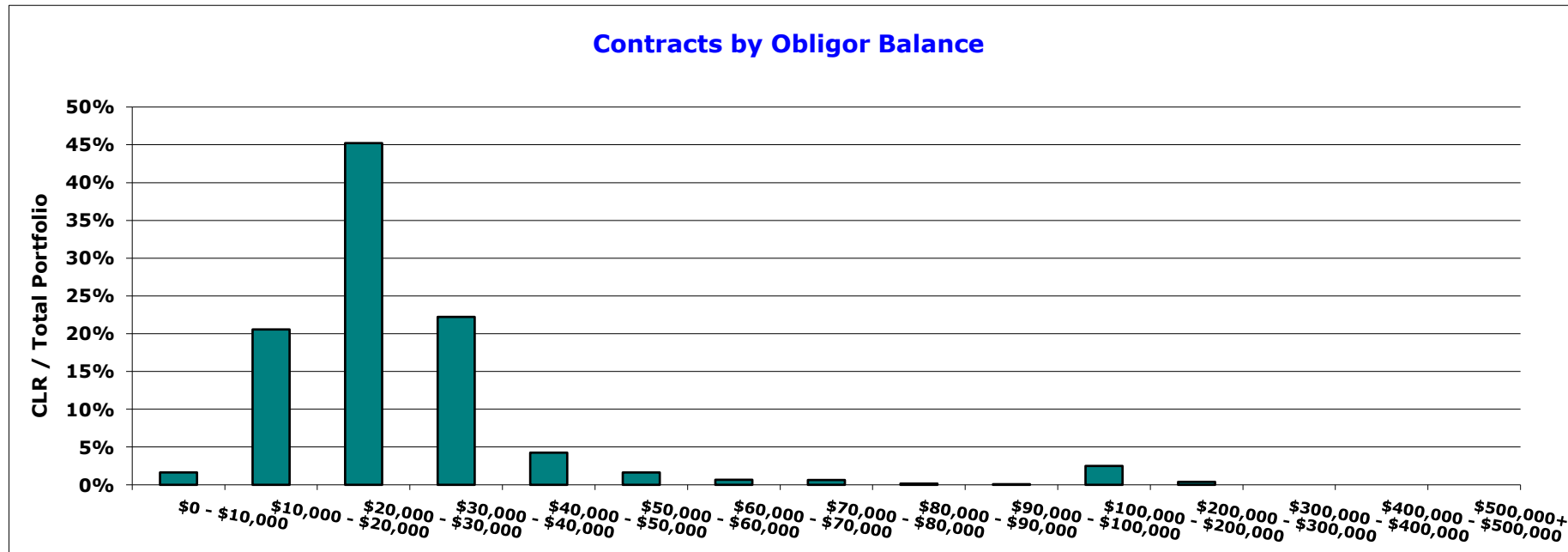
Asset Type	Current Lease Receivable (CLR) (\$)	CLR / Total Portfolio (%)	Contracts No.	Contracts No. / Total Portfolio (%)
Passenger	52,529,397	49.06%	2,606	57.86%
Light Commercial	47,463,132	44.33%	1,783	39.59%
Heavy Commercial	7,081,425	6.61%	115	2.55%
Grand Total	107,073,953	100.00%	4,504	100.00%



**FP Ignition 2017-B Trust
as at 31 December 2018**

Contracts by Obligor Balance

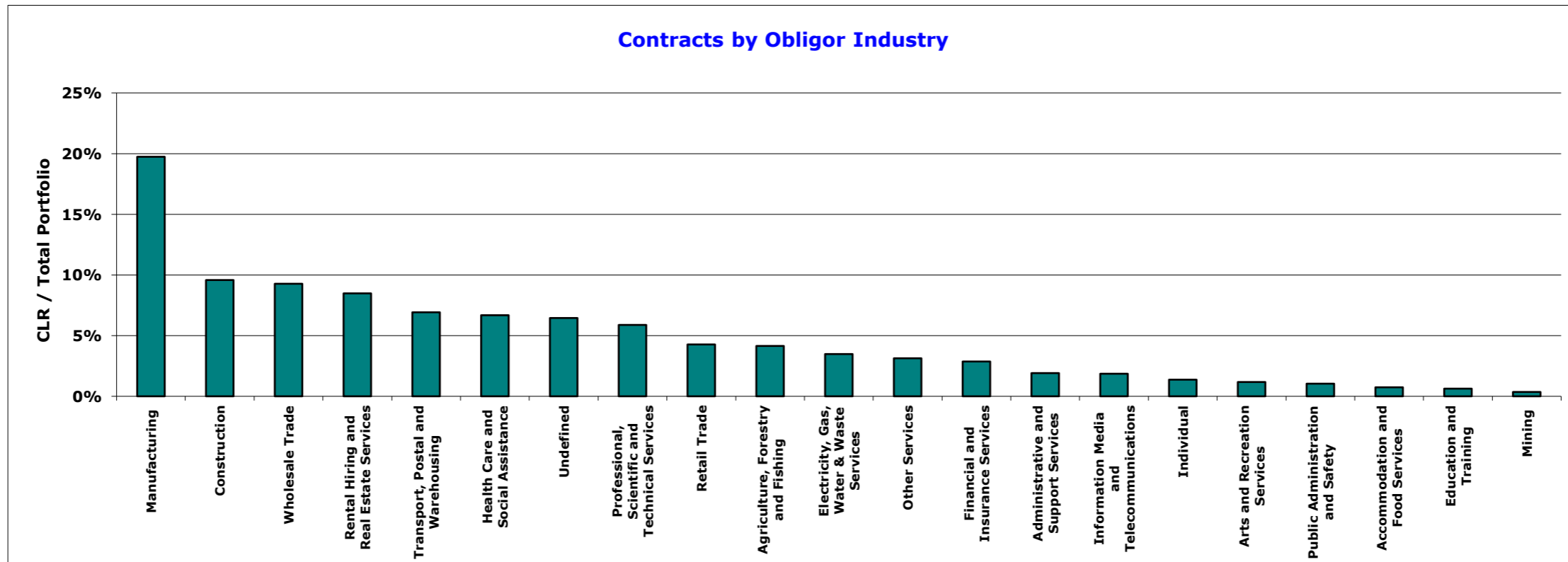
Obligor Balance	Current Lease Receivable (CLR) (\$)	CLR / Total Portfolio (%)	Contracts No.	Contracts No. / Total Portfolio (%)
\$0 - \$10,000	1,756,726	1.64%	225	5.00%
\$10,000 - \$20,000	22,019,635	20.56%	1,433	31.82%
\$20,000 - \$30,000	48,423,355	45.22%	1,949	43.27%
\$30,000 - \$40,000	23,796,540	22.22%	715	15.87%
\$40,000 - \$50,000	4,558,001	4.26%	104	2.31%
\$50,000 - \$60,000	1,751,894	1.64%	32	0.71%
\$60,000 - \$70,000	718,524	0.67%	11	0.24%
\$70,000 - \$80,000	685,043	0.64%	9	0.20%
\$80,000 - \$90,000	176,523	0.16%	2	0.04%
\$90,000 - \$100,000	90,255	0.08%	1	0.02%
\$100,000 - \$200,000	2,676,420	2.50%	21	0.47%
\$200,000 - \$300,000	421,037	0.39%	2	0.04%
\$300,000 - \$400,000	-	0.00%	-	0.00%
\$400,000 - \$500,000	-	0.00%	-	0.00%
\$500,000+	-	0.00%	-	0.00%
Grand Total	107,073,953	100.00%	4,504	100.00%



FP Ignition 2017-B Trust
as at 31 December 2018

Contracts by Obligor Industry

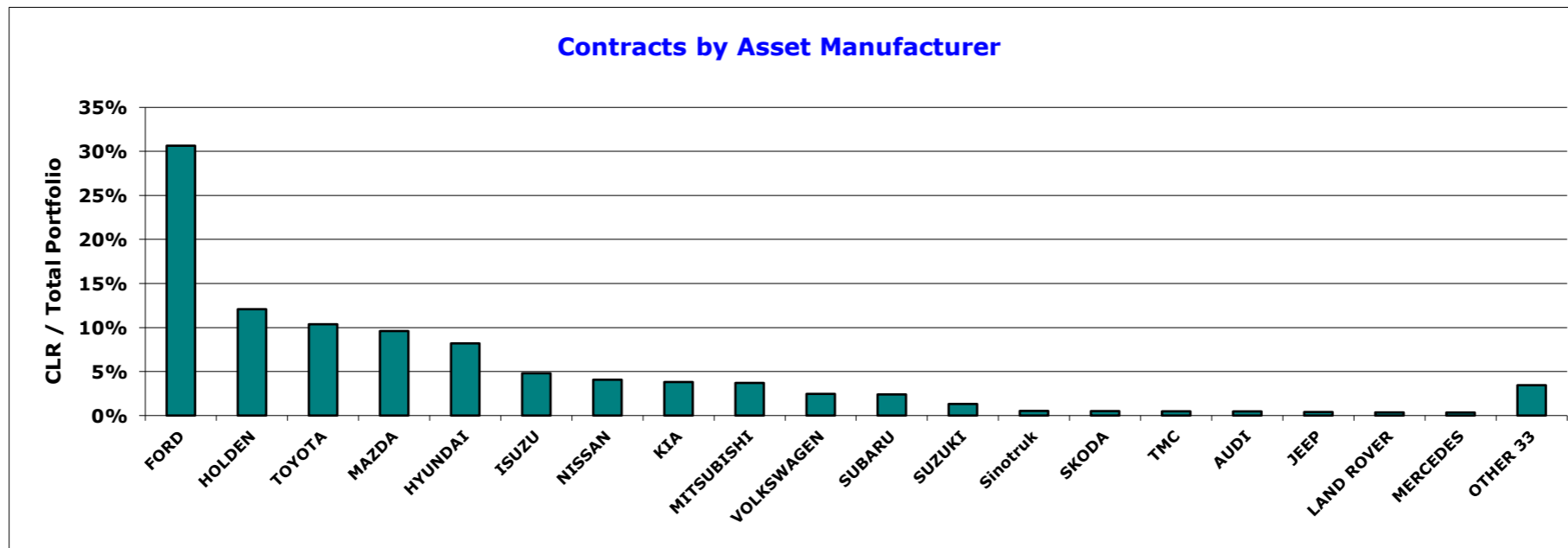
Industry Sector	Current Lease Receivable (CLR) (\$)	CLR / Total Portfolio (%)	Contracts No.	Contracts No. / Total Portfolio (%)
Manufacturing	21,134,182	19.74%	899	19.96%
Construction	10,256,035	9.58%	397	8.81%
Wholesale Trade	9,929,612	9.27%	431	9.57%
Rental Hiring and Real Estate Services	9,081,400	8.48%	354	7.86%
Transport, Postal and Warehousing	7,412,702	6.92%	276	6.13%
Health Care and Social Assistance	7,153,992	6.68%	419	9.30%
Undefined	6,908,030	6.45%	281	6.24%
Professional, Scientific and Technical Services	6,297,895	5.88%	260	5.77%
Retail Trade	4,573,864	4.27%	206	4.57%
Agriculture, Forestry and Fishing	4,441,812	4.15%	158	3.51%
Electricity, Gas, Water & Waste Services	3,727,386	3.48%	146	3.24%
Other Services	3,354,791	3.13%	125	2.78%
Financial and Insurance Services	3,069,941	2.87%	125	2.78%
Administrative and Support Services	2,047,405	1.91%	80	1.78%
Information Media and Telecommunications	1,991,389	1.86%	107	2.38%
Individual	1,467,525	1.37%	54	1.20%
Arts and Recreation Services	1,259,534	1.18%	61	1.35%
Public Administration and Safety	1,114,538	1.04%	55	1.22%
Accommodation and Food Services	793,602	0.74%	31	0.69%
Education and Training	675,487	0.63%	27	0.60%
Mining	382,830	0.36%	12	0.27%
Grand Total	107,073,953	100.00%	4,504	100.00%



FP Ignition 2017-B Trust
as at 31 December 2018

Contracts by Asset Manufacturer

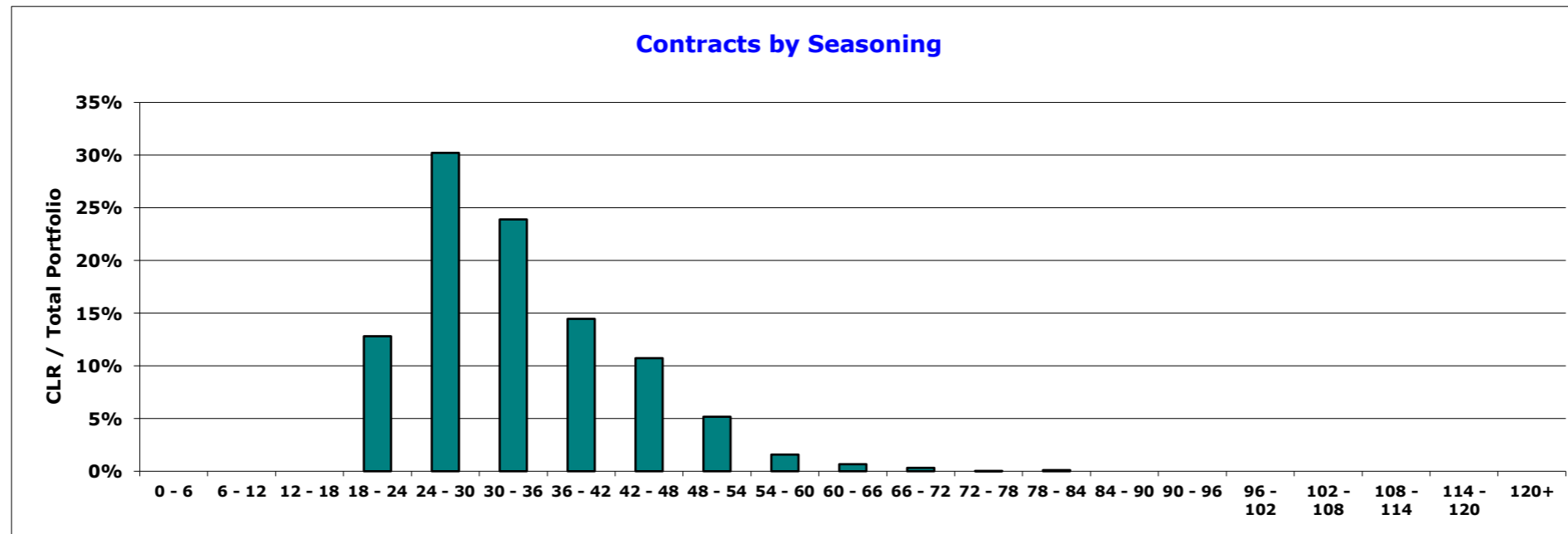
Manufacturer	Current Lease Receivable (CLR) (\$)	CLR / Total Portfolio (%)	Contracts No.	Contracts No. / Total Portfolio (%)
FORD	32,816,088	30.65%	1,213	26.93%
HOLDEN	12,932,957	12.08%	582	12.92%
TOYOTA	11,104,675	10.37%	493	10.95%
MAZDA	10,279,598	9.60%	471	10.46%
HYUNDAI	8,779,956	8.20%	486	10.79%
ISUZU	5,141,845	4.80%	152	3.37%
NISSAN	4,358,548	4.07%	201	4.46%
KIA	4,079,253	3.81%	183	4.06%
MITSUBISHI	3,967,740	3.71%	228	5.06%
VOLKSWAGEN	2,634,753	2.46%	98	2.18%
SUBARU	2,570,025	2.40%	120	2.66%
SUZUKI	1,411,402	1.32%	118	2.62%
Sinotruk	564,693	0.53%	4	0.09%
SKODA	540,515	0.50%	29	0.64%
TMC	515,884	0.48%	6	0.13%
AUDI	505,463	0.47%	13	0.29%
JEEP	428,879	0.40%	10	0.22%
LAND ROVER	382,333	0.36%	9	0.20%
MERCEDES	368,299	0.34%	10	0.22%
OTHER 33	3,691,047	3.45%	78	1.73%
Grand Total	107,073,953	100.00%	4,504	100.00%



**FP Ignition 2017-B Trust
as at 31 December 2018**

Contracts by Seasoning

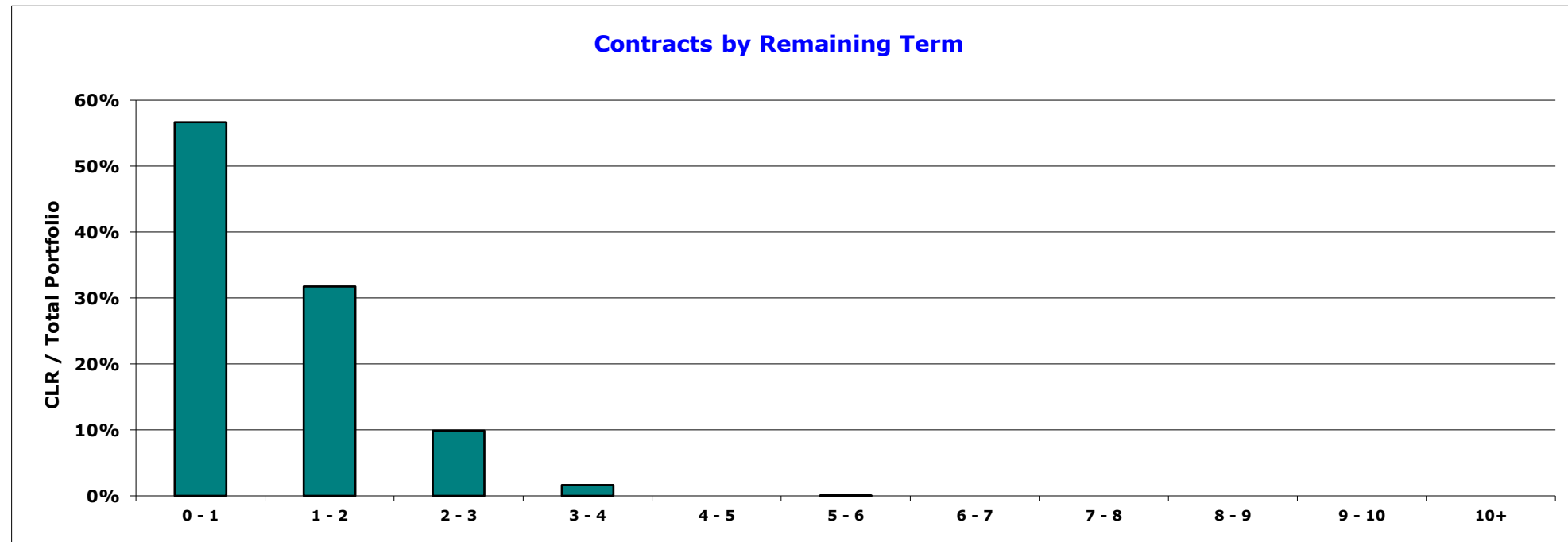
Seasoning Band Mths	Current Lease Receivable (CLR) (\$)	CLR / Total Portfolio (%)	Contracts No.	Contracts No. / Total Portfolio (%)
0 - 6	-	0.00%	-	0.00%
6 - 12	-	0.00%	-	0.00%
12 - 18	-	0.00%	-	0.00%
18 - 24	13,719,198	12.81%	464	10.30%
24 - 30	32,351,488	30.21%	1,194	26.51%
30 - 36	25,588,316	23.90%	1,070	23.76%
36 - 42	15,484,147	14.46%	733	16.27%
42 - 48	11,490,456	10.73%	587	13.03%
48 - 54	5,537,934	5.17%	296	6.57%
54 - 60	1,694,920	1.58%	91	2.02%
60 - 66	716,577	0.67%	38	0.84%
66 - 72	346,679	0.32%	20	0.44%
72 - 78	27,139	0.03%	2	0.04%
78 - 84	117,099	0.11%	9	0.20%
84 - 90	-	0.00%	-	0.00%
90 - 96	-	0.00%	-	0.00%
96 - 102	-	0.00%	-	0.00%
102 - 108	-	0.00%	-	0.00%
108 - 114	-	0.00%	-	0.00%
114 - 120	-	0.00%	-	0.00%
120+	-	0.00%	-	0.00%
Grand Total	107,073,953	100.00%	4,504	100.00%



**FP Ignition 2017-B Trust
as at 31 December 2018**

Contracts by Remaining Term

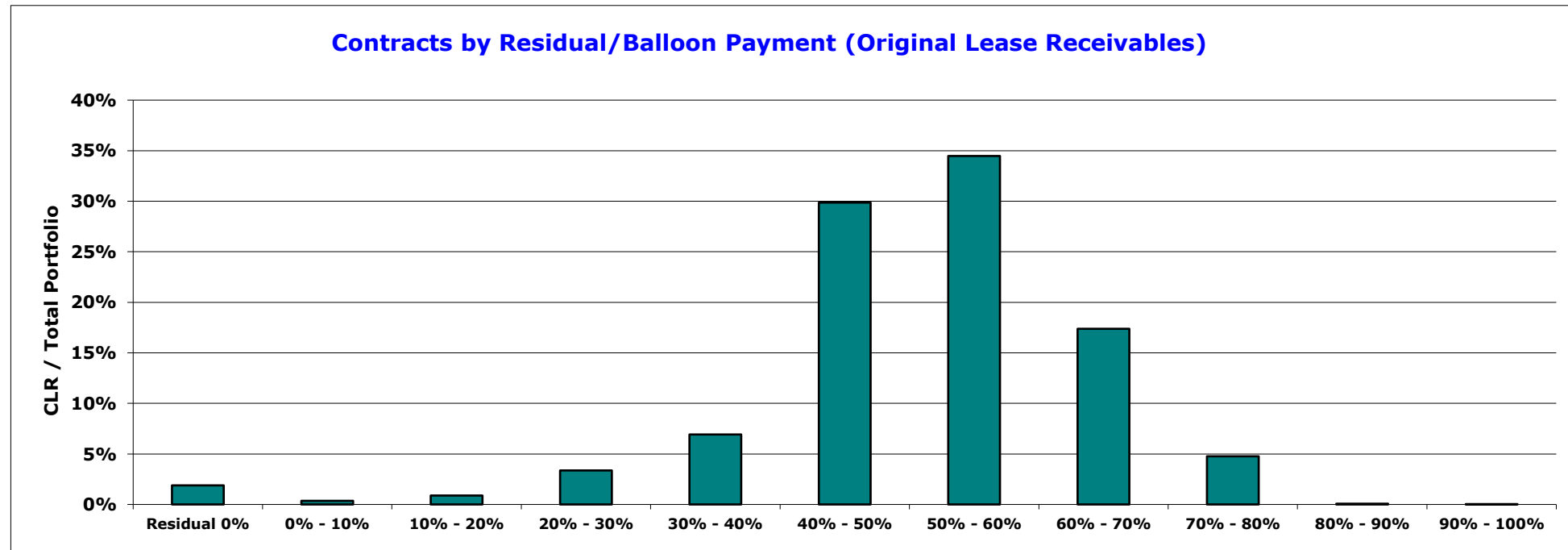
Remaining Term Band Yrs	Current Lease Receivable (CLR) (\$)	CLR / Total Portfolio (%)	Contracts No.	Contracts No. / Total Portfolio (%)
0 - 1	60,673,440	56.66%	2,901	64.41%
1 - 2	34,003,705	31.76%	1,295	28.75%
2 - 3	10,585,109	9.89%	270	5.99%
3 - 4	1,759,326	1.64%	37	0.82%
4 - 5	-	0.00%	-	0.00%
5 - 6	52,372	0.05%	1	0.02%
6 - 7	-	0.00%	-	0.00%
7 - 8	-	0.00%	-	0.00%
8 - 9	-	0.00%	-	0.00%
9 - 10	-	0.00%	-	0.00%
10+	-	0.00%	-	0.00%
Grand Total	107,073,953	100.00%	4,504	100.00%



**FP Ignition 2017-B Trust
as at 31 December 2018**

Contracts by Residual/Balloon Payment (Original Lease Receivables)

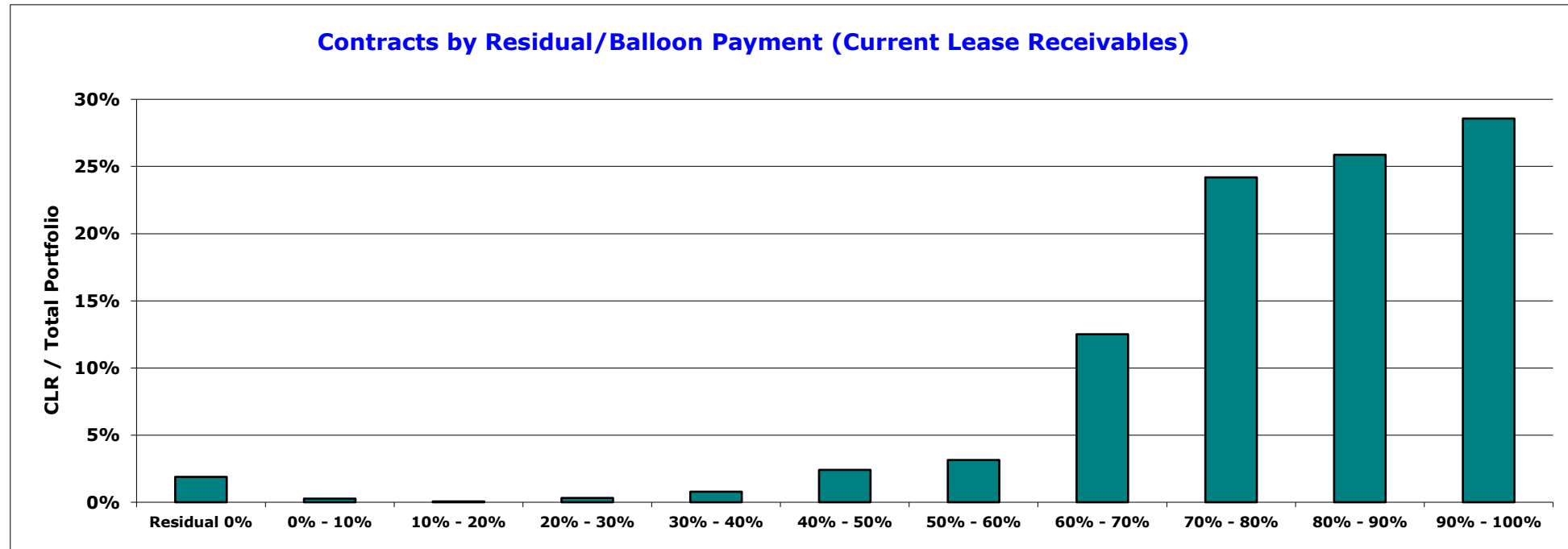
Residual Band (original)	Current Lease Receivable (CLR) (\$)	CLR / Total Portfolio (%)	Contracts No.	Contracts No. / Total Portfolio (%)
Residual 0%	2,021,465	1.89%	75	1.67%
0% - 10%	384,799	0.36%	18	0.40%
10% - 20%	946,432	0.88%	31	0.69%
20% - 30%	3,601,984	3.36%	112	2.49%
30% - 40%	7,411,736	6.92%	431	9.57%
40% - 50%	31,974,305	29.86%	1,481	32.88%
50% - 60%	36,909,461	34.47%	1,486	32.99%
60% - 70%	18,607,358	17.38%	674	14.96%
70% - 80%	5,100,957	4.76%	192	4.26%
80% - 90%	78,305	0.07%	3	0.07%
90% - 100%	37,151	0.03%	1	0.02%
Grand Total	107,073,953	100.00%	4,504	100.00%



**FP Ignition 2017-B Trust
as at 31 December 2018**

Contracts by Residual/Balloon Payment (Current Lease Receivables)

Residual Band (current)	Current Lease Receivable (CLR) (\$)	CLR / Total Portfolio (%)	Contracts No.	Contracts No. / Total Portfolio (%)
Residual 0%	2,021,465	1.89%	75	1.67%
0% - 10%	287,754	0.27%	4	0.09%
10% - 20%	63,484	0.06%	6	0.13%
20% - 30%	340,871	0.32%	7	0.16%
30% - 40%	838,699	0.78%	22	0.49%
40% - 50%	2,578,560	2.41%	48	1.07%
50% - 60%	3,366,309	3.14%	104	2.31%
60% - 70%	13,391,969	12.51%	495	10.99%
70% - 80%	25,897,360	24.19%	1,030	22.87%
80% - 90%	27,697,294	25.87%	1,175	26.09%
90% - 100%	30,590,189	28.57%	1,538	34.15%
Grand Total	107,073,953	100.00%	4,504	100.00%



FP Ignition 2017-B Trust
as at 31 December 2018

Contracts by New/Used

New/Used	Current Lease Receivable (CLR) (\$)	CLR / Total Portfolio (%)	Contracts No.	Contracts No. / Total Portfolio (%)
New	103,139,106	96.33%	4,312	95.74%
Used	3,934,847	3.67%	192	4.26%
Grand Total	107,073,953	100.00%	4,504	100.00%

