

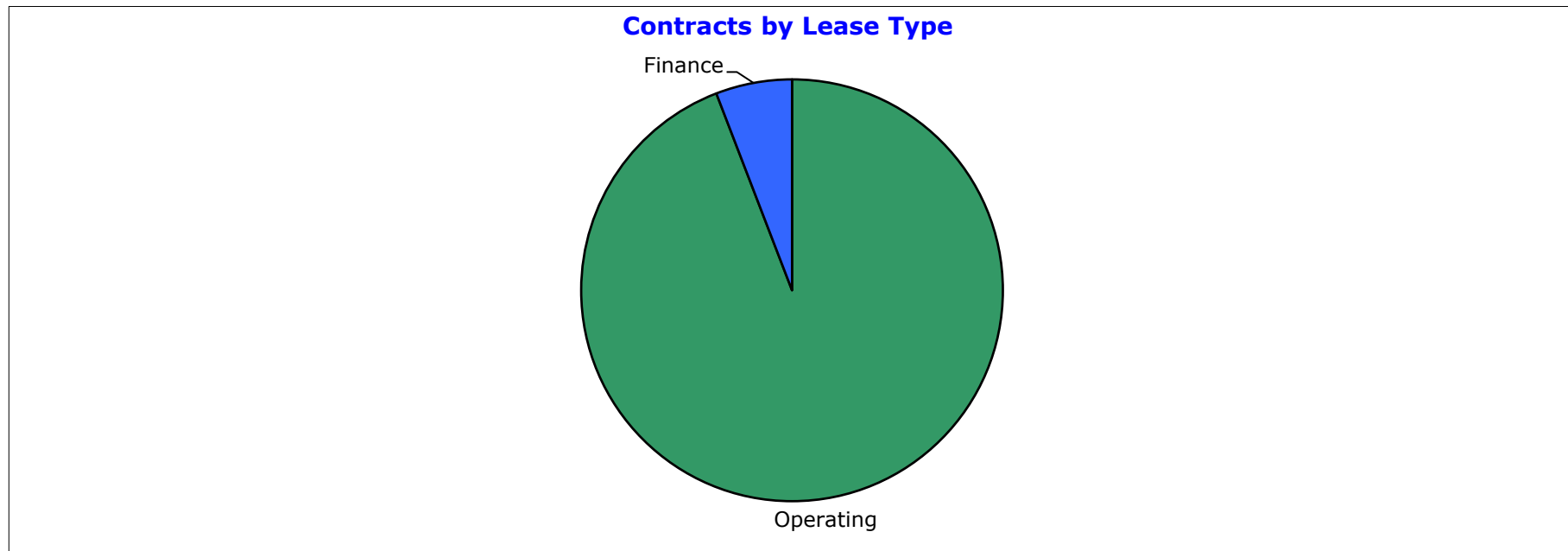
**FP Ignition 2017-B Trust
as at 28 February 2018**

Portfolio Summary	
Portfolio size	\$174,026,792
Number of contracts	6,830
Number of obligors	1,823
Minimum implied margin incl. hedge rate (p.a.)	10.45%
Average contract balance (current)	\$25,480
Maximum contract balance (current)	\$254,581
Average contract balance (original)	\$37,150
Maximum contract balance (original)	\$323,645
Weighted average total contract term (months)	43.64
Weighted average seasoning (months)	26.59
Weighted average remaining term (months)	17.08
Maximum remaining term (months)	73.08
Weighted average residual (current)	73.21%
Weighted average residual (original)	50.21%
Maximum residual (original)	95.46%

FP Ignition 2017-B Trust
as at 28 February 2018

Contracts by Lease Type

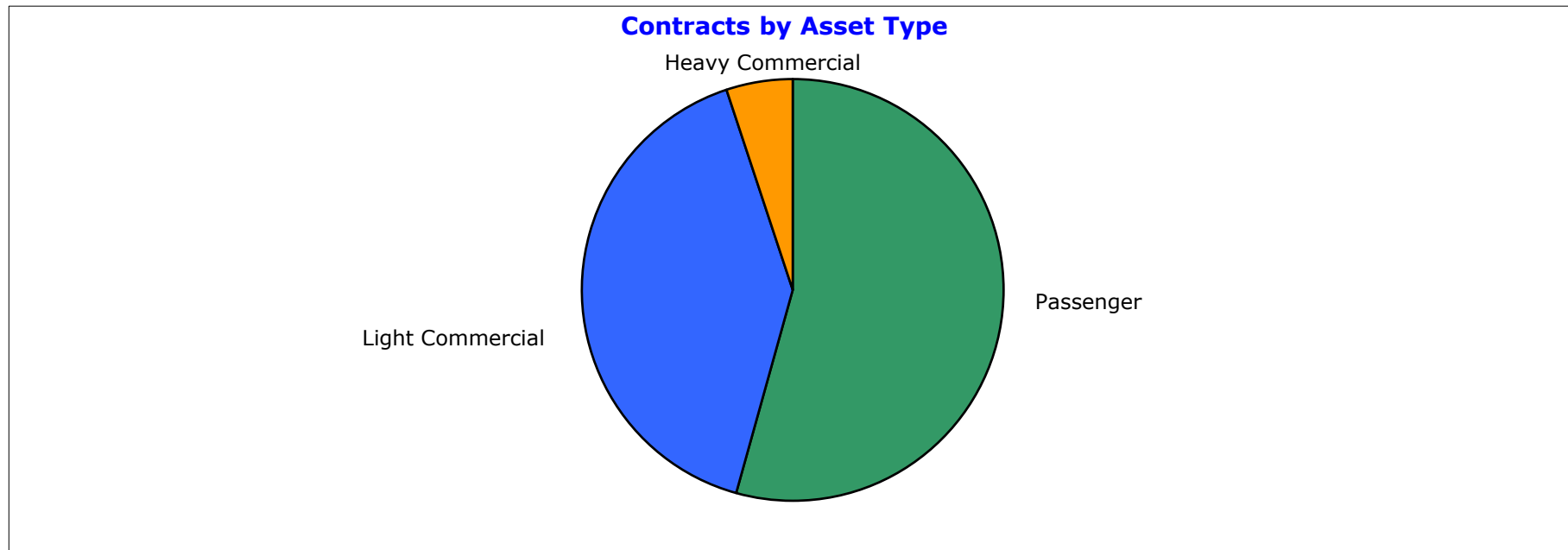
Lease Category	Current Lease Receivable (CLR) (\$)	CLR / Total Portfolio (%)	Contracts No.	Contracts No. / Total Portfolio (%)
Operating	163,855,496	94.16%	6,586	96.43%
Finance	10,171,296	5.84%	244	3.57%
Grand Total	174,026,792	100.00%	6,830	100.00%



**FP Ignition 2017-B Trust
as at 28 February 2018**

Contracts by Asset Type

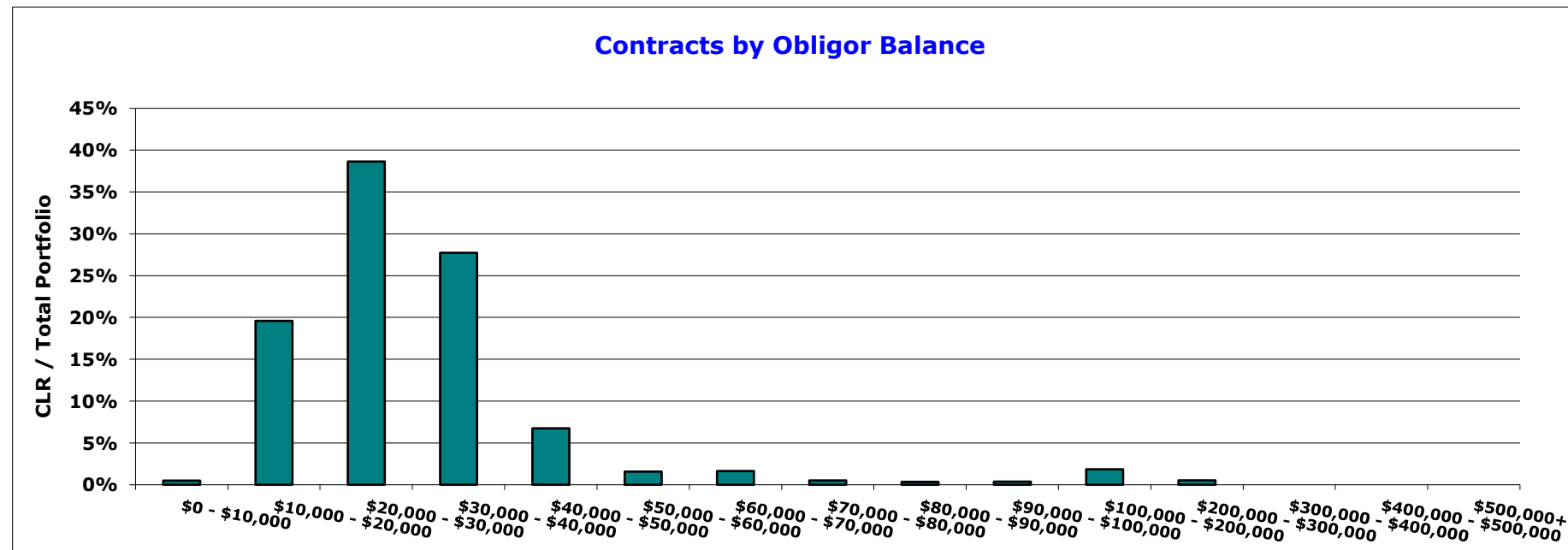
Asset Type	Current Lease Receivable (CLR) (\$)	CLR / Total Portfolio (%)	Contracts No.	Contracts No. / Total Portfolio (%)
Passenger	94,537,533	54.32%	4,256	62.31%
Light Commercial	70,637,419	40.59%	2,450	35.87%
Heavy Commercial	8,851,840	5.09%	124	1.82%
Grand Total	174,026,792	100.00%	6,830	100.00%



FP Ignition 2017-B Trust
as at 28 February 2018

Contracts by Obligor Balance

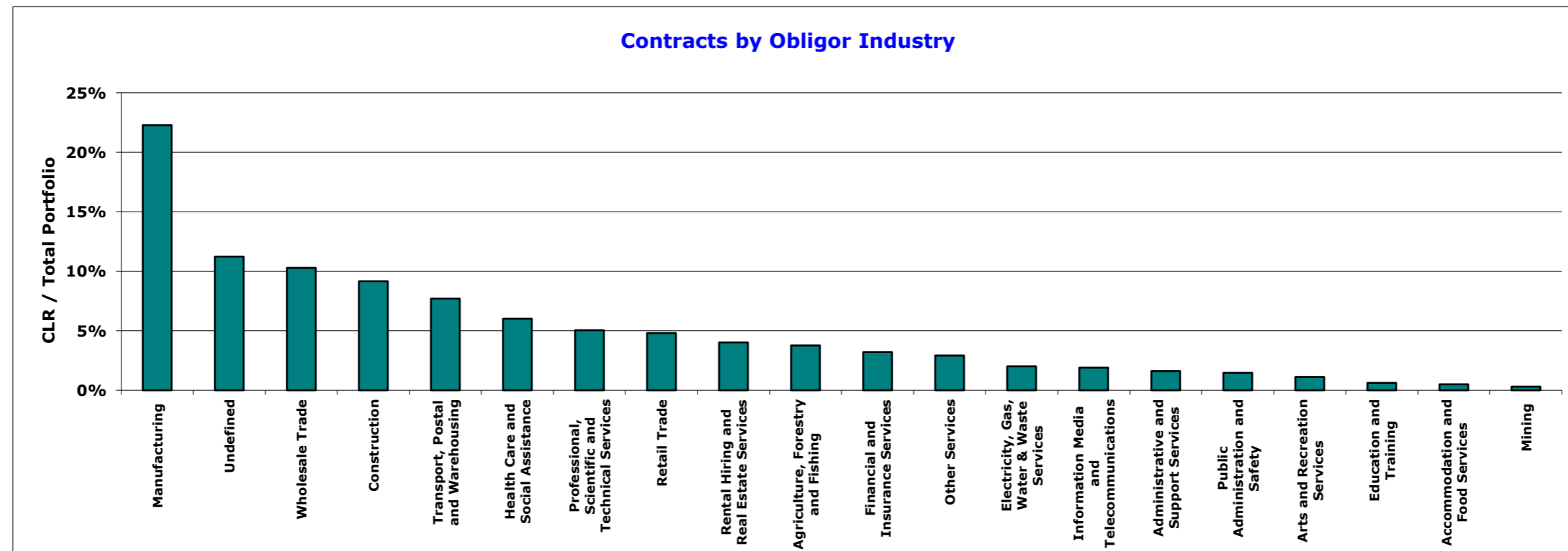
Obligor Balance	Current Lease Receivable (CLR) (\$)	CLR / Total Portfolio (%)	Contracts No.	Contracts No. / Total Portfolio (%)
\$0 - \$10,000	860,584	0.49%	95	1.39%
\$10,000 - \$20,000	34,087,247	19.59%	2,187	32.02%
\$20,000 - \$30,000	67,243,242	38.64%	2,703	39.58%
\$30,000 - \$40,000	48,243,216	27.72%	1,428	20.91%
\$40,000 - \$50,000	11,730,964	6.74%	268	3.92%
\$50,000 - \$60,000	2,733,713	1.57%	51	0.75%
\$60,000 - \$70,000	2,852,157	1.64%	45	0.66%
\$70,000 - \$80,000	896,105	0.51%	12	0.18%
\$80,000 - \$90,000	599,583	0.34%	7	0.10%
\$90,000 - \$100,000	648,303	0.37%	7	0.10%
\$100,000 - \$200,000	3,217,182	1.85%	23	0.34%
\$200,000 - \$300,000	914,498	0.53%	4	0.06%
\$300,000 - \$400,000	-	0.00%	-	0.00%
\$400,000 - \$500,000	-	0.00%	-	0.00%
\$500,000+	-	0.00%	-	0.00%
Grand Total	174,026,792	100.00%	6,830	100.00%



FP Ignition 2017-B Trust
as at 28 February 2018

Contracts by Obligor Industry

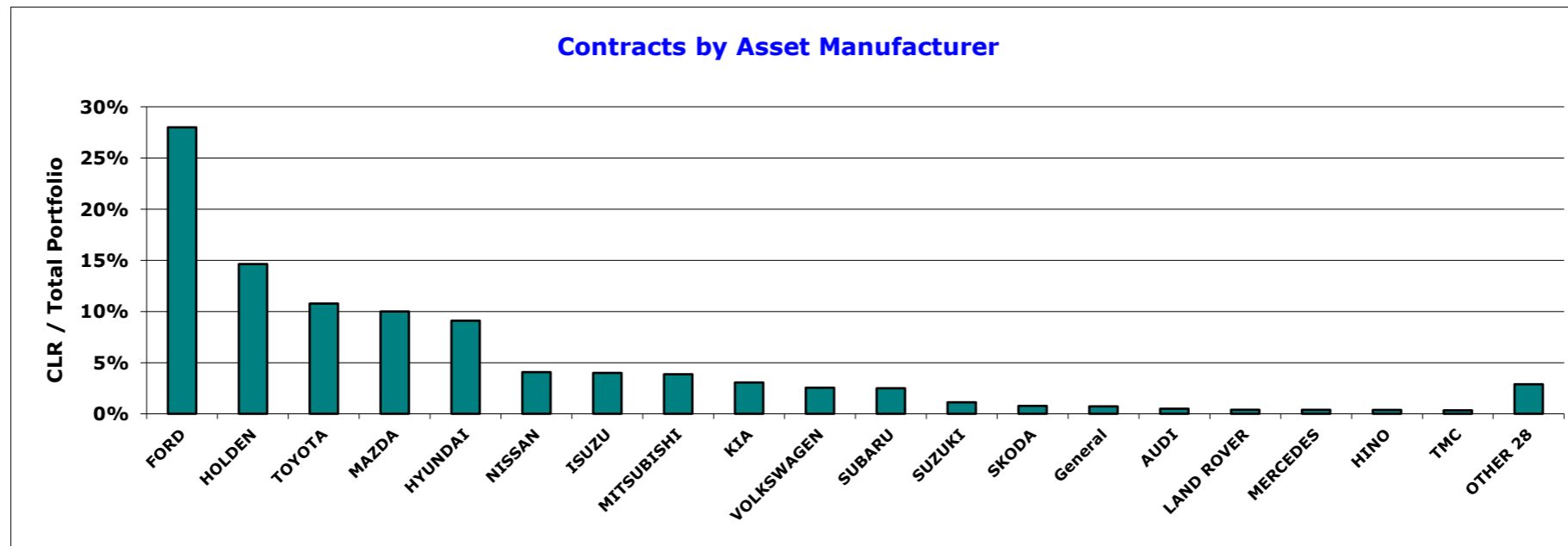
Industry Sector	Current Lease Receivable (CLR) (\$)	CLR / Total Portfolio (%)	Contracts No.	Contracts No. / Total Portfolio (%)
Manufacturing	38,771,045	22.28%	1,536	22.49%
Undefined	19,548,253	11.23%	656	9.60%
Wholesale Trade	17,905,706	10.29%	703	10.29%
Construction	15,933,898	9.16%	573	8.39%
Transport, Postal and Warehousing	13,401,866	7.70%	452	6.62%
Health Care and Social Assistance	10,465,251	6.01%	540	7.91%
Professional, Scientific and Technical Services	8,784,435	5.05%	340	4.98%
Retail Trade	8,366,324	4.81%	375	5.49%
Rental Hiring and Real Estate Services	7,002,885	4.02%	307	4.49%
Agriculture, Forestry and Fishing	6,558,530	3.77%	239	3.50%
Financial and Insurance Services	5,589,033	3.21%	236	3.46%
Other Services	5,083,292	2.92%	183	2.68%
Electricity, Gas, Water & Waste Services	3,496,146	2.01%	115	1.68%
Information Media and Telecommunications	3,325,084	1.91%	164	2.40%
Administrative and Support Services	2,796,231	1.61%	96	1.41%
Public Administration and Safety	2,558,321	1.47%	135	1.98%
Arts and Recreation Services	1,946,272	1.12%	89	1.30%
Education and Training	1,086,633	0.62%	44	0.64%
Accommodation and Food Services	872,458	0.50%	30	0.44%
Mining	535,129	0.31%	17	0.25%
Grand Total	174,026,792	100.00%	6,830	100.00%



FP Ignition 2017-B Trust
as at 28 February 2018

Contracts by Asset Manufacturer

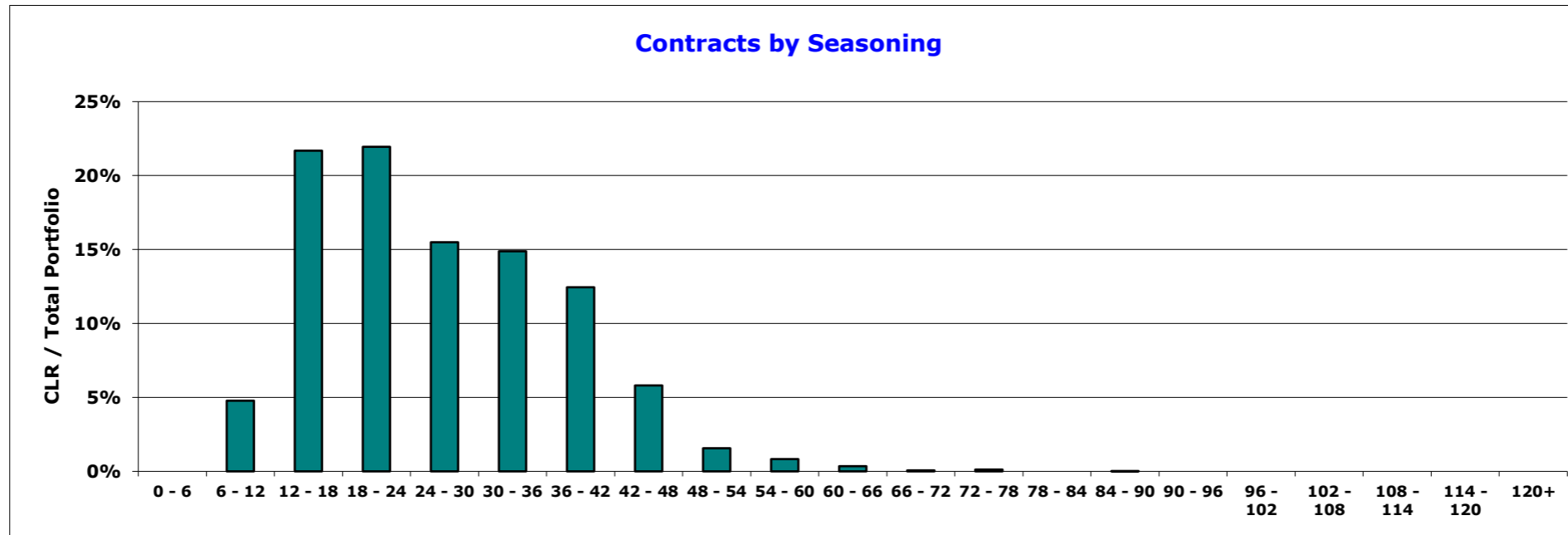
Manufacturer	Current Lease Receivable (CLR) (\$)	CLR / Total Portfolio (%)	Contracts No.	Contracts No. / Total Portfolio (%)
FORD	48,710,494	27.99%	1,675	24.52%
HOLDEN	25,459,152	14.63%	1,107	16.21%
TOYOTA	18,743,062	10.77%	766	11.22%
MAZDA	17,397,132	10.00%	762	11.16%
HYUNDAI	15,825,300	9.09%	756	11.07%
NISSAN	7,080,380	4.07%	300	4.39%
ISUZU	6,948,271	3.99%	187	2.74%
MITSUBISHI	6,721,108	3.86%	339	4.96%
KIA	5,321,745	3.06%	211	3.09%
VOLKSWAGEN	4,434,930	2.55%	154	2.25%
SUBARU	4,341,603	2.49%	178	2.61%
SUZUKI	1,956,447	1.12%	139	2.04%
SKODA	1,342,156	0.77%	66	0.97%
General	1,260,794	0.72%	12	0.18%
AUDI	858,655	0.49%	18	0.26%
LAND ROVER	682,824	0.39%	14	0.20%
MERCEDES	673,280	0.39%	19	0.28%
HINO	657,239	0.38%	6	0.09%
TMC	589,798	0.34%	6	0.09%
OTHER 28	5,022,421	2.89%	115	1.68%
Grand Total	174,026,792	100.00%	6,830	100.00%



**FP Ignition 2017-B Trust
as at 28 February 2018**

Contracts by Seasoning

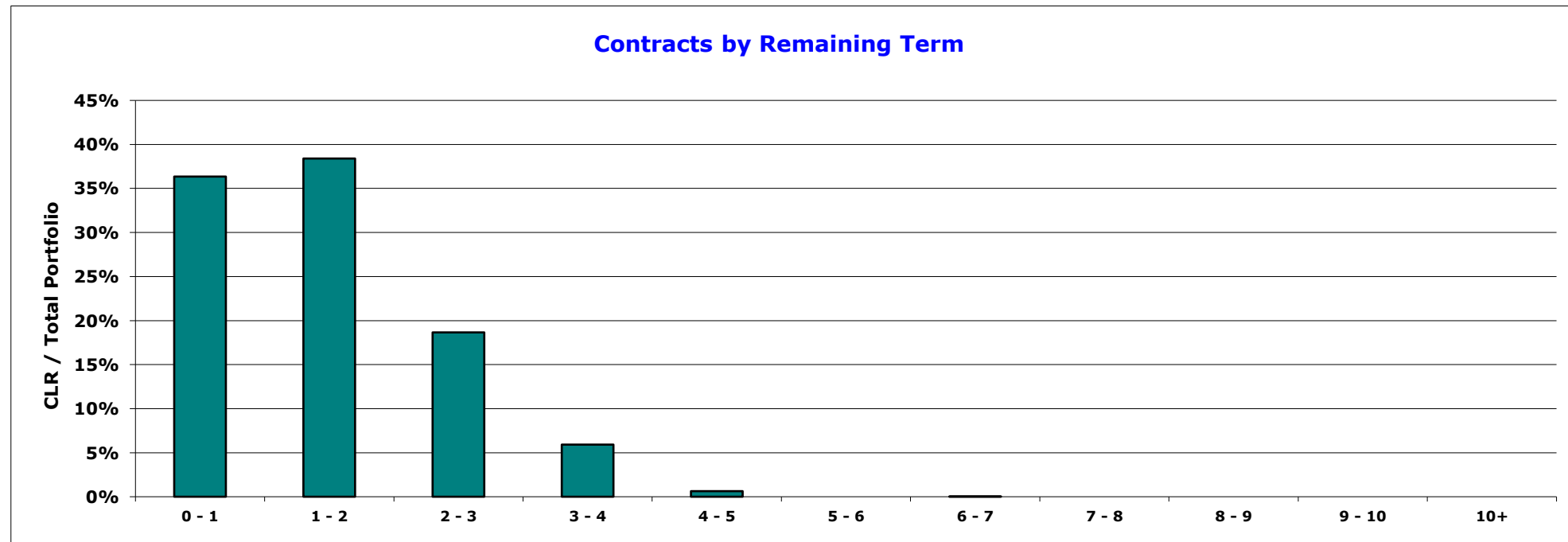
Seasoning Band Mths	Current Lease Receivable (CLR) (\$)	CLR / Total Portfolio (%)	Contracts No.	Contracts No. / Total Portfolio (%)
0 - 6	-	0.00%	-	0.00%
6 - 12	8,315,901	4.78%	250	3.66%
12 - 18	37,733,086	21.68%	1,275	18.67%
18 - 24	38,191,518	21.95%	1,270	18.59%
24 - 30	26,959,488	15.49%	1,039	15.21%
30 - 36	25,898,806	14.88%	1,151	16.85%
36 - 42	21,662,611	12.45%	1,072	15.70%
42 - 48	10,110,890	5.81%	511	7.48%
48 - 54	2,721,776	1.56%	136	1.99%
54 - 60	1,443,586	0.83%	70	1.02%
60 - 66	610,700	0.35%	35	0.51%
66 - 72	120,431	0.07%	7	0.10%
72 - 78	216,313	0.12%	12	0.18%
78 - 84	-	0.00%	-	0.00%
84 - 90	41,686	0.02%	2	0.03%
90 - 96	-	0.00%	-	0.00%
96 - 102	-	0.00%	-	0.00%
102 - 108	-	0.00%	-	0.00%
108 - 114	-	0.00%	-	0.00%
114 - 120	-	0.00%	-	0.00%
120+	-	0.00%	-	0.00%
Grand Total	174,026,792	100.00%	6,830	100.00%



**FP Ignition 2017-B Trust
as at 28 February 2018**

Contracts by Remaining Term

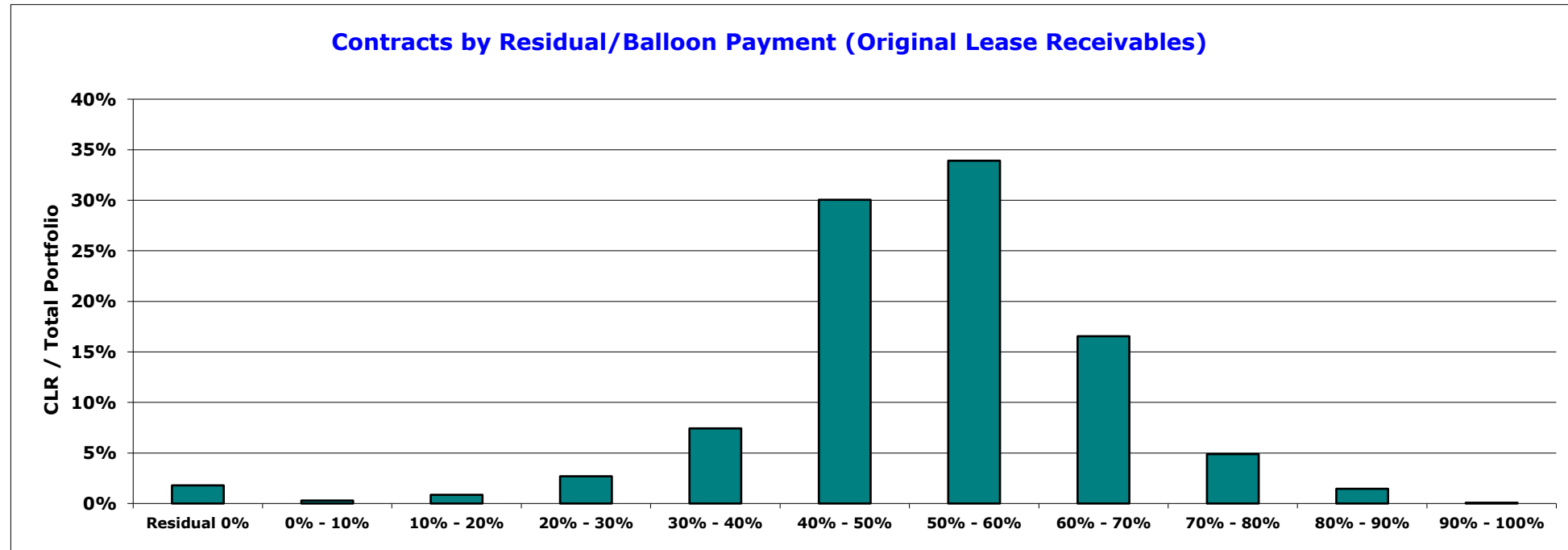
Remaining Term Band Yrs	Current Lease Receivable (CLR) (\$)	CLR / Total Portfolio (%)	Contracts No.	Contracts No. / Total Portfolio (%)
0 - 1	63,266,171	36.35%	3,148	46.09%
1 - 2	66,829,892	38.40%	2,422	35.46%
2 - 3	32,471,349	18.66%	1,034	15.14%
3 - 4	10,299,771	5.92%	205	3.00%
4 - 5	1,102,236	0.63%	20	0.29%
5 - 6	-	0.00%	-	0.00%
6 - 7	57,373	0.03%	1	0.01%
7 - 8	-	0.00%	-	0.00%
8 - 9	-	0.00%	-	0.00%
9 - 10	-	0.00%	-	0.00%
10+	-	0.00%	-	0.00%
Grand Total	174,026,792	100.00%	6,830	100.00%



**FP Ignition 2017-B Trust
as at 28 February 2018**

Contracts by Residual/Balloon Payment (Original Lease Receivables)

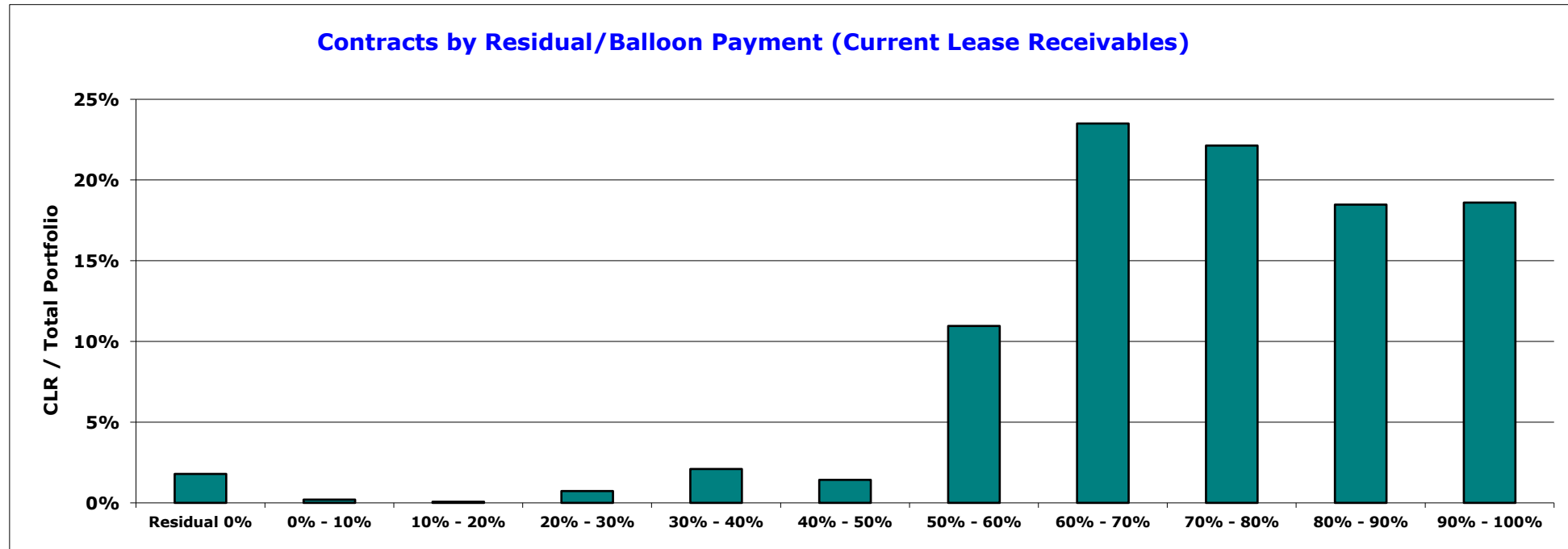
Residual Band (original)	Current Lease Receivable (CLR) (\$)	CLR / Total Portfolio (%)	Contracts No.	Contracts No. / Total Portfolio (%)
Residual 0%	3,120,544	1.79%	87	1.27%
0% - 10%	508,853	0.29%	17	0.25%
10% - 20%	1,493,174	0.86%	37	0.54%
20% - 30%	4,687,235	2.69%	120	1.76%
30% - 40%	12,928,584	7.43%	605	8.86%
40% - 50%	52,295,055	30.05%	2,204	32.27%
50% - 60%	59,022,823	33.92%	2,279	33.37%
60% - 70%	28,799,717	16.55%	1,030	15.08%
70% - 80%	8,504,540	4.89%	328	4.80%
80% - 90%	2,533,763	1.46%	119	1.74%
90% - 100%	132,503	0.08%	4	0.06%
Grand Total	174,026,792	100.00%	6,830	100.00%



**FP Ignition 2017-B Trust
as at 28 February 2018**

Contracts by Residual/Balloon Payment (Current Lease Receivables)

Residual Band (current)	Current Lease Receivable (CLR) (\$)	CLR / Total Portfolio (%)	Contracts No.	Contracts No. / Total Portfolio (%)
Residual 0%	3,120,544	1.79%	87	1.27%
0% - 10%	351,604	0.20%	4	0.06%
10% - 20%	120,942	0.07%	9	0.13%
20% - 30%	1,275,434	0.73%	28	0.41%
30% - 40%	3,652,666	2.10%	60	0.88%
40% - 50%	2,482,260	1.43%	77	1.13%
50% - 60%	19,073,437	10.96%	619	9.06%
60% - 70%	40,898,759	23.50%	1,430	20.94%
70% - 80%	38,522,507	22.14%	1,464	21.43%
80% - 90%	32,156,256	18.48%	1,412	20.67%
90% - 100%	32,372,383	18.60%	1,640	24.01%
Grand Total	174,026,792	100.00%	6,830	100.00%



FP Ignition 2017-B Trust
as at 28 February 2018

Contracts by New/Used

New/Used	Current Lease Receivable (CLR) (\$)	CLR / Total Portfolio (%)	Contracts No.	Contracts No. / Total Portfolio (%)
New	167,452,014	96.22%	6,556	95.99%
Used	6,574,778	3.78%	274	4.01%
Grand Total	174,026,792	100.00%	6,830	100.00%

