

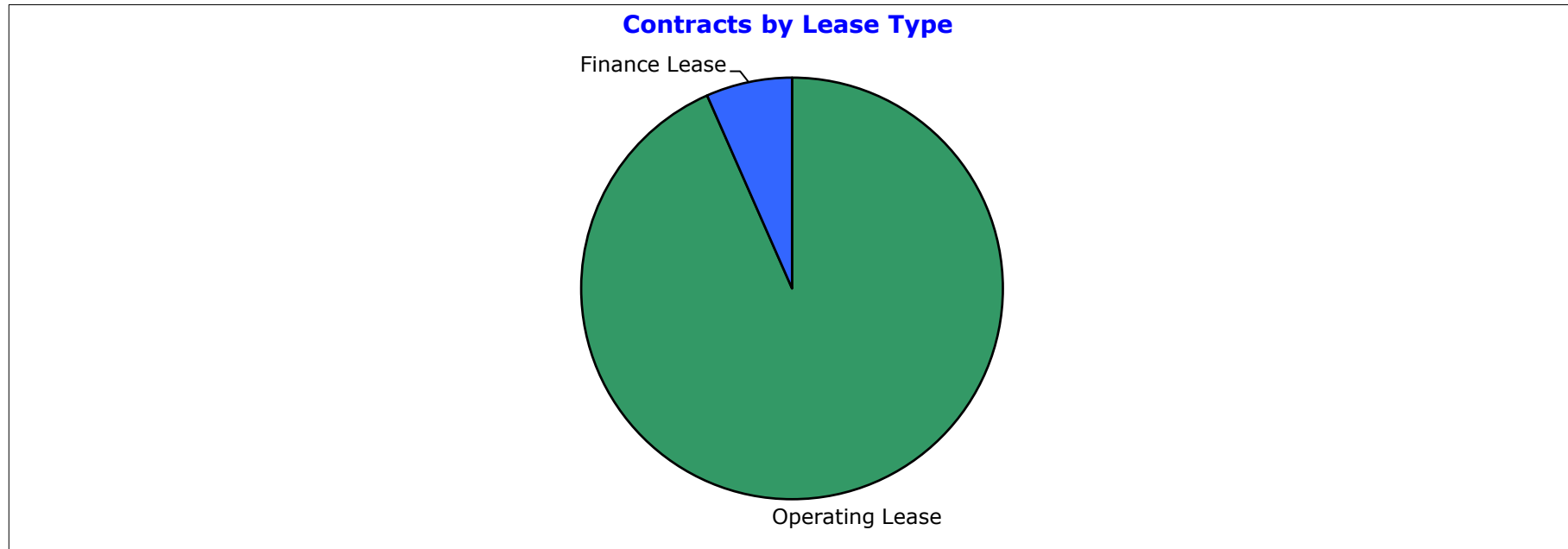
**FP Ignition 2017-B Trust
as at 31 January 2019**

Portfolio Summary	
Portfolio size	\$101,849,420
Number of contracts	4,318
Number of obligors	1,364
Minimum implied margin incl. hedge rate (p.a.)	11.46%
Average contract balance (current)	\$23,587
Maximum contract balance (current)	\$214,025
Average contract balance (original)	\$38,273
Maximum contract balance (original)	\$323,645
Weighted average total contract term (months)	44.52
Weighted average seasoning (months)	34.22
Weighted average remaining term (months)	11.73
Maximum remaining term (months)	62.01
Weighted average residual (current)	79.69%
Weighted average residual (original)	49.12%
Maximum residual (original)	94.39%

FP Ignition 2017-B Trust
as at 31 January 2019

Contracts by Lease Type

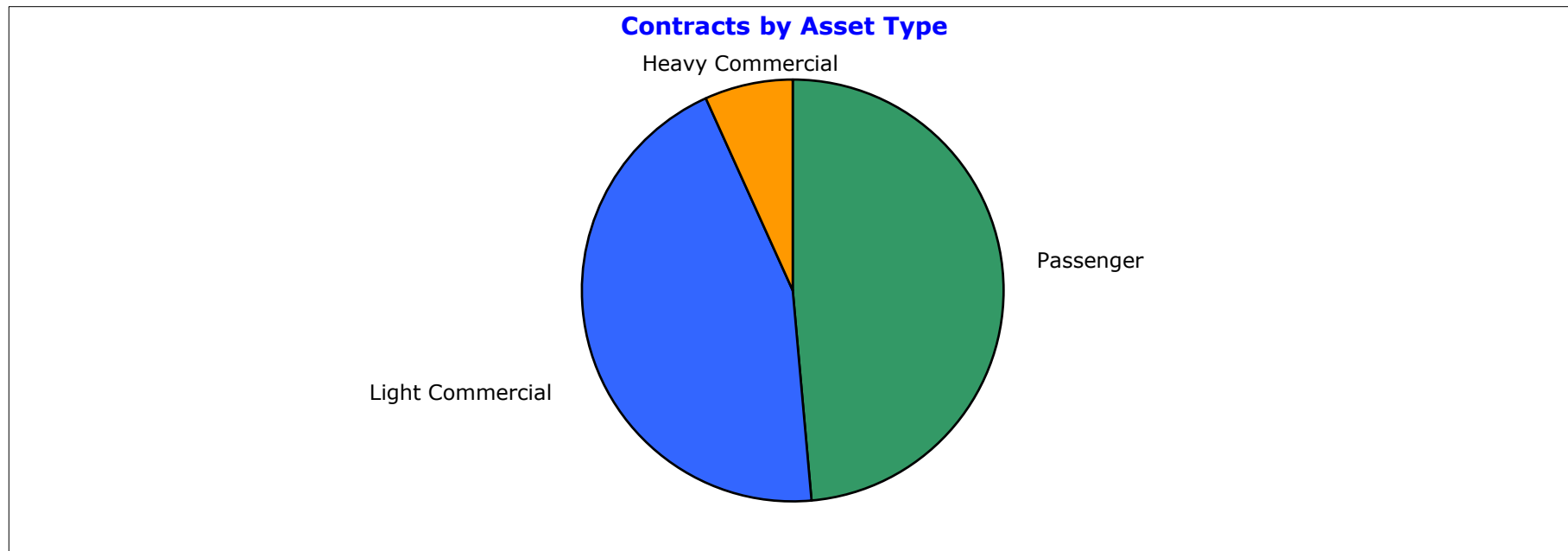
Lease Category	Current Lease Receivable (CLR) (\$)	CLR / Total Portfolio (%)	Contracts No.	Contracts No. / Total Portfolio (%)
Operating Lease	95,129,840	93.40%	4,121	95.44%
Finance Lease	6,719,580	6.60%	197	4.56%
Grand Total	101,849,420	100.00%	4,318	100.00%



**FP Ignition 2017-B Trust
as at 31 January 2019**

Contracts by Asset Type

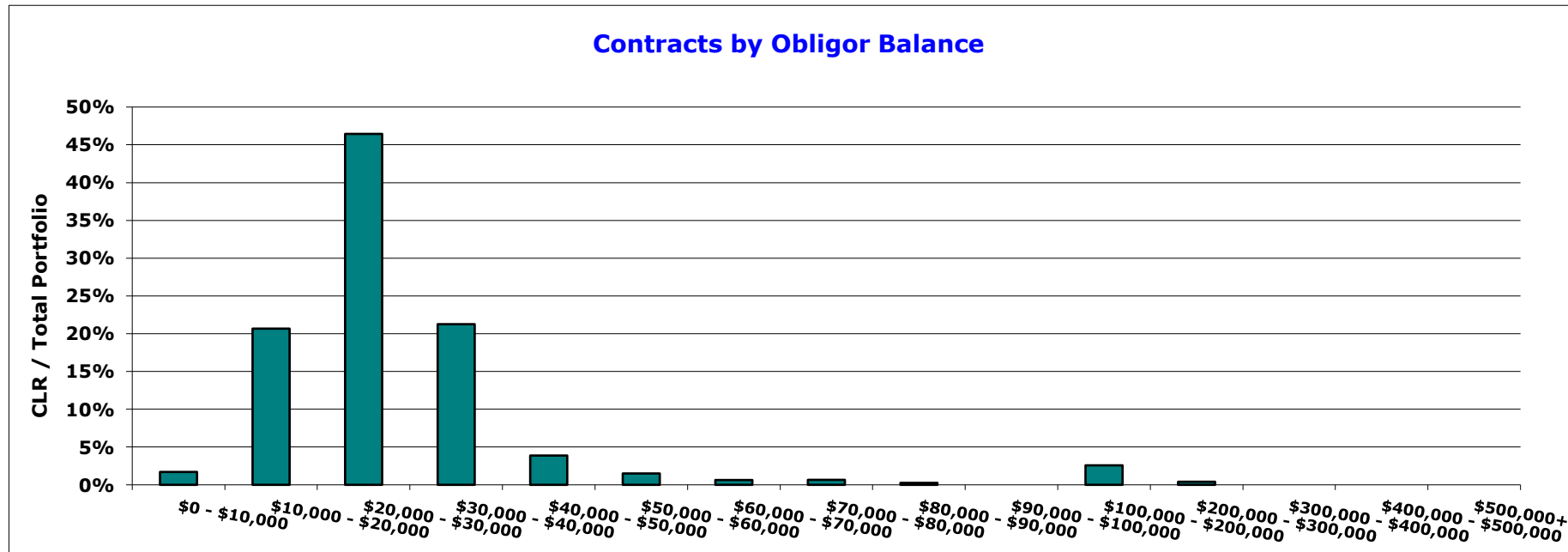
Asset Type	Current Lease Receivable (CLR) (\$)	CLR / Total Portfolio (%)	Contracts No.	Contracts No. / Total Portfolio (%)
Passenger	49,477,016	48.58%	2,479	57.41%
Light Commercial	45,484,295	44.66%	1,727	40.00%
Heavy Commercial	6,888,109	6.76%	112	2.59%
Grand Total	101,849,420	100.00%	4,318	100.00%



**FP Ignition 2017-B Trust
as at 31 January 2019**

Contracts by Obligor Balance

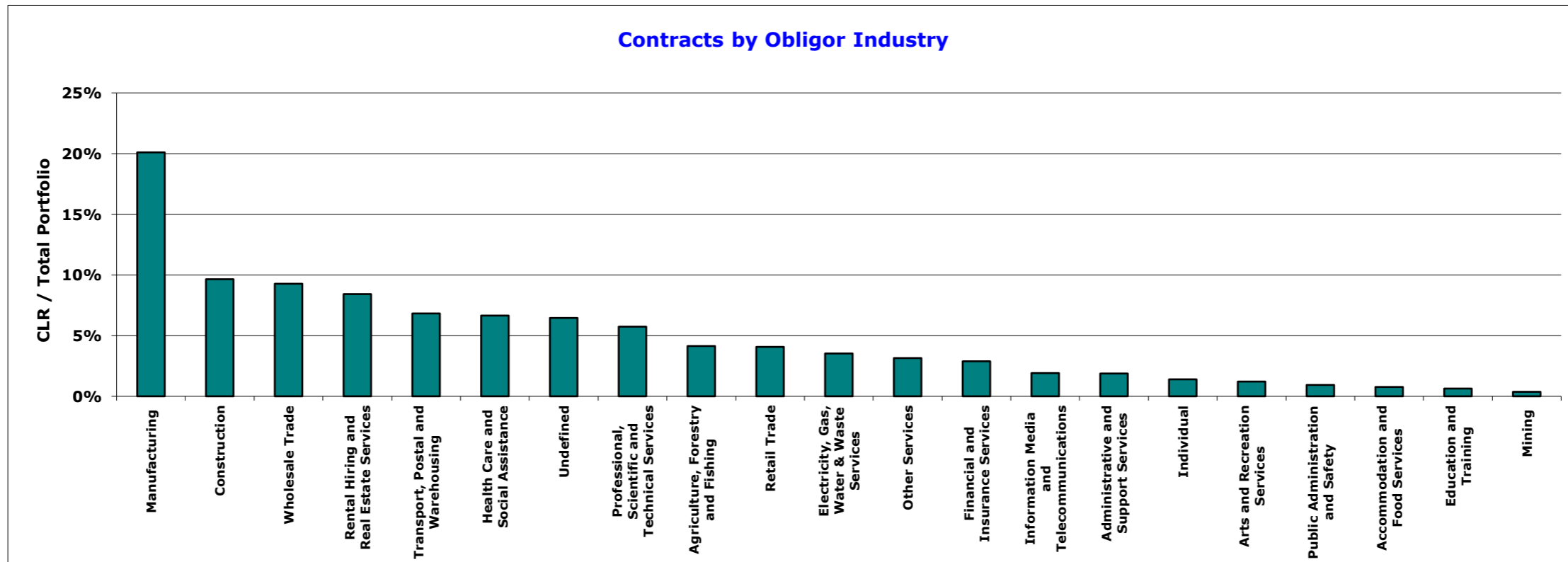
Obligor Balance	Current Lease Receivable (CLR) (\$)	CLR / Total Portfolio (%)	Contracts No.	Contracts No. / Total Portfolio (%)
\$0 - \$10,000	1,737,102	1.71%	228	5.28%
\$10,000 - \$20,000	21,054,429	20.67%	1,368	31.68%
\$20,000 - \$30,000	47,300,642	46.44%	1,909	44.21%
\$30,000 - \$40,000	21,654,385	21.26%	650	15.05%
\$40,000 - \$50,000	3,949,249	3.88%	90	2.08%
\$50,000 - \$60,000	1,531,700	1.50%	28	0.65%
\$60,000 - \$70,000	647,076	0.64%	10	0.23%
\$70,000 - \$80,000	672,421	0.66%	9	0.21%
\$80,000 - \$90,000	261,793	0.26%	3	0.07%
\$90,000 - \$100,000	-	0.00%	-	0.00%
\$100,000 - \$200,000	2,626,189	2.58%	21	0.49%
\$200,000 - \$300,000	414,434	0.41%	2	0.05%
\$300,000 - \$400,000	-	0.00%	-	0.00%
\$400,000 - \$500,000	-	0.00%	-	0.00%
\$500,000+	-	0.00%	-	0.00%
Grand Total	101,849,420	100.00%	4,318	100.00%



**FP Ignition 2017-B Trust
as at 31 January 2019**

Contracts by Obligor Industry

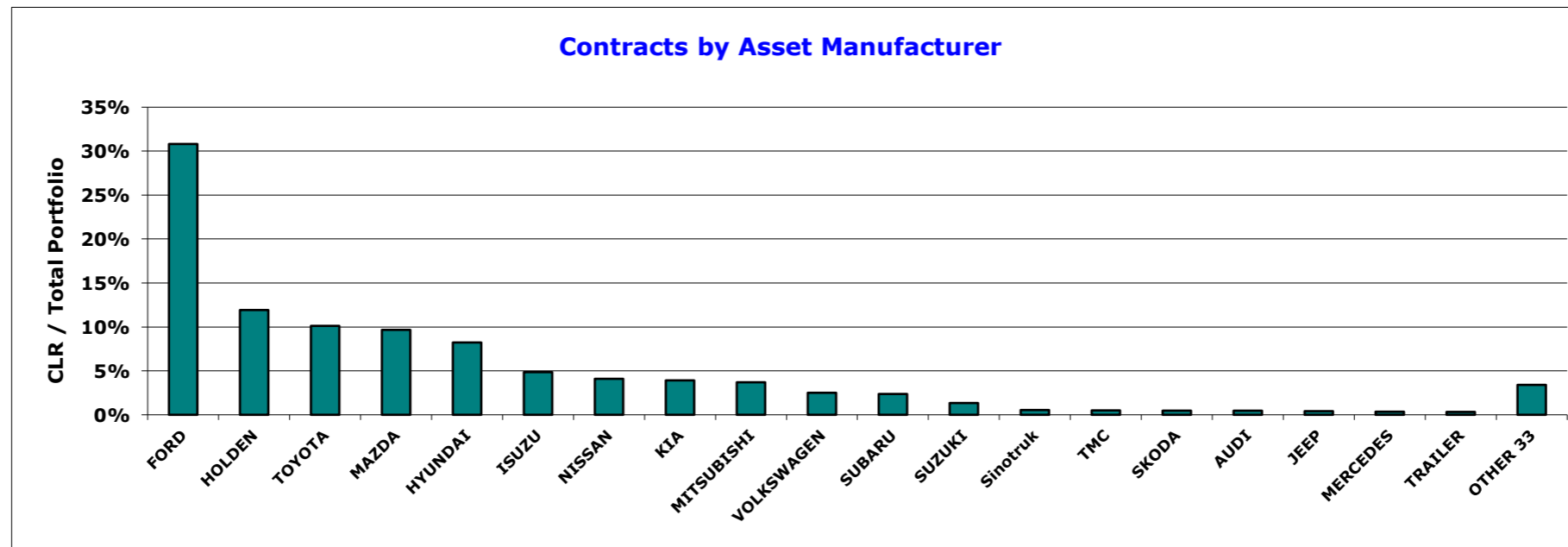
Industry Sector	Current Lease Receivable (CLR) (\$)	CLR / Total Portfolio (%)	Contracts No.	Contracts No. / Total Portfolio (%)
Manufacturing	20,471,414	20.10%	886	20.52%
Construction	9,824,976	9.65%	385	8.92%
Wholesale Trade	9,446,222	9.27%	415	9.61%
Rental Hiring and Real Estate Services	8,576,405	8.42%	339	7.85%
Transport, Postal and Warehousing	6,952,344	6.83%	257	5.95%
Health Care and Social Assistance	6,774,582	6.65%	398	9.22%
Undefined	6,576,651	6.46%	271	6.28%
Professional, Scientific and Technical Services	5,845,257	5.74%	239	5.53%
Agriculture, Forestry and Fishing	4,216,332	4.14%	153	3.54%
Retail Trade	4,146,394	4.07%	182	4.21%
Electricity, Gas, Water & Waste Services	3,593,329	3.53%	142	3.29%
Other Services	3,206,190	3.15%	120	2.78%
Financial and Insurance Services	2,937,867	2.88%	120	2.78%
Information Media and Telecommunications	1,948,698	1.91%	106	2.45%
Administrative and Support Services	1,912,293	1.88%	74	1.71%
Individual	1,423,878	1.40%	53	1.23%
Arts and Recreation Services	1,237,086	1.21%	61	1.41%
Public Administration and Safety	951,374	0.93%	48	1.11%
Accommodation and Food Services	781,065	0.77%	31	0.72%
Education and Training	650,141	0.64%	26	0.60%
Mining	376,923	0.37%	12	0.28%
Grand Total	101,849,420	100.00%	4,318	100.00%



FP Ignition 2017-B Trust
as at 31 January 2019

Contracts by Asset Manufacturer

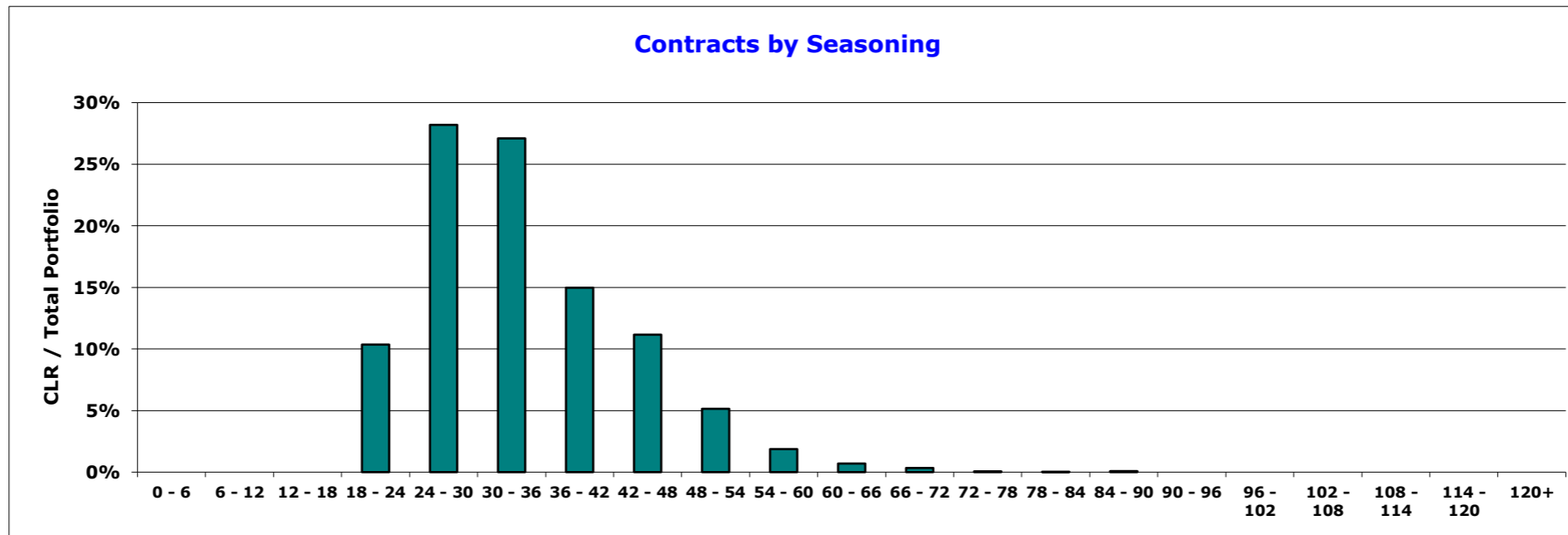
Manufacturer	Current Lease Receivable (CLR) (\$)	CLR / Total Portfolio (%)	Contracts No.	Contracts No. / Total Portfolio (%)
FORD	31,382,349	30.81%	1,174	27.19%
HOLDEN	12,141,260	11.92%	544	12.60%
TOYOTA	10,304,585	10.12%	460	10.65%
MAZDA	9,844,112	9.67%	453	10.49%
HYUNDAI	8,379,241	8.23%	470	10.88%
ISUZU	4,943,562	4.85%	146	3.38%
NISSAN	4,169,906	4.09%	194	4.49%
KIA	3,988,573	3.92%	181	4.19%
MITSUBISHI	3,769,009	3.70%	221	5.12%
VOLKSWAGEN	2,551,644	2.51%	97	2.25%
SUBARU	2,412,497	2.37%	114	2.64%
SUZUKI	1,365,676	1.34%	116	2.69%
Sinotruk	553,178	0.54%	4	0.09%
TMC	508,271	0.50%	6	0.14%
SKODA	480,672	0.47%	26	0.60%
AUDI	475,945	0.47%	12	0.28%
JEEP	419,856	0.41%	10	0.23%
MERCEDES	358,320	0.35%	10	0.23%
TRAILER	334,507	0.33%	9	0.21%
OTHER 33	3,466,256	3.40%	71	1.64%
Grand Total	101,849,420	100.00%	4,318	100.00%



**FP Ignition 2017-B Trust
as at 31 January 2019**

Contracts by Seasoning

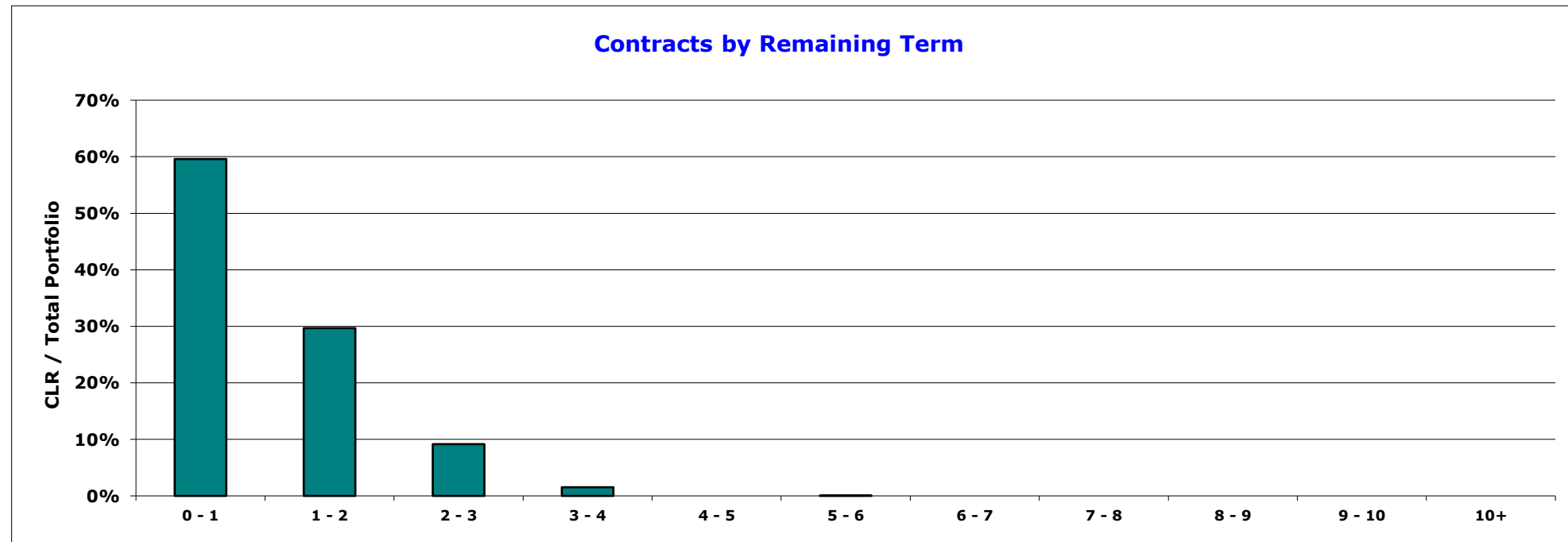
Seasoning Band Mths	Current Lease Receivable (CLR) (\$)	CLR / Total Portfolio (%)	Contracts No.	Contracts No. / Total Portfolio (%)
0 - 6	-	0.00%	-	0.00%
6 - 12	-	0.00%	-	0.00%
12 - 18	-	0.00%	-	0.00%
18 - 24	10,547,593	10.36%	364	8.43%
24 - 30	28,716,211	28.19%	1,060	24.55%
30 - 36	27,598,492	27.10%	1,135	26.29%
36 - 42	15,246,961	14.97%	724	16.77%
42 - 48	11,366,677	11.16%	581	13.46%
48 - 54	5,237,561	5.14%	283	6.55%
54 - 60	1,902,334	1.87%	100	2.32%
60 - 66	709,456	0.70%	38	0.88%
66 - 72	344,110	0.34%	19	0.44%
72 - 78	64,477	0.06%	5	0.12%
78 - 84	31,349	0.03%	3	0.07%
84 - 90	84,198	0.08%	6	0.14%
90 - 96	-	0.00%	-	0.00%
96 - 102	-	0.00%	-	0.00%
102 - 108	-	0.00%	-	0.00%
108 - 114	-	0.00%	-	0.00%
114 - 120	-	0.00%	-	0.00%
120+	-	0.00%	-	0.00%
Grand Total	101,849,420	100.00%	4,318	100.00%



**FP Ignition 2017-B Trust
as at 31 January 2019**

Contracts by Remaining Term

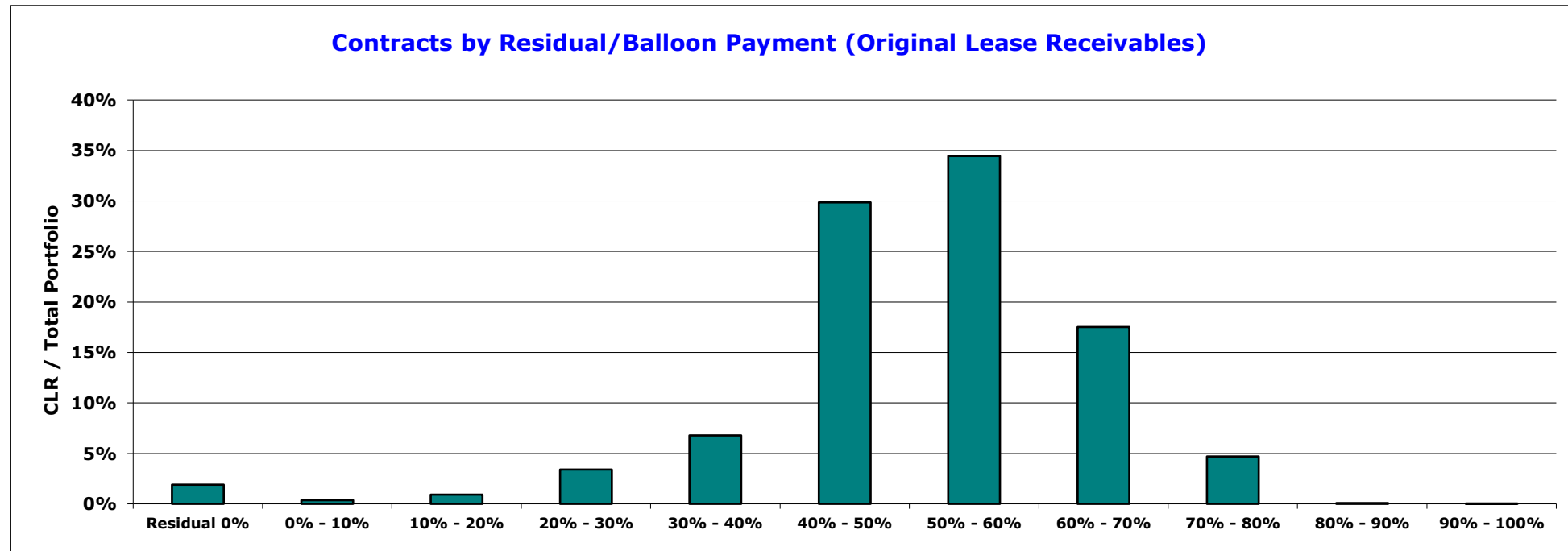
Remaining Term Band Yrs	Current Lease Receivable (CLR) (\$)	CLR / Total Portfolio (%)	Contracts No.	Contracts No. / Total Portfolio (%)
0 - 1	60,687,515	59.59%	2,907	67.32%
1 - 2	30,228,705	29.68%	1,145	26.52%
2 - 3	9,324,726	9.16%	233	5.40%
3 - 4	1,556,618	1.53%	32	0.74%
4 - 5	-	0.00%	-	0.00%
5 - 6	51,856	0.05%	1	0.02%
6 - 7	-	0.00%	-	0.00%
7 - 8	-	0.00%	-	0.00%
8 - 9	-	0.00%	-	0.00%
9 - 10	-	0.00%	-	0.00%
10+	-	0.00%	-	0.00%
Grand Total	101,849,420	100.00%	4,318	100.00%



**FP Ignition 2017-B Trust
as at 31 January 2019**

Contracts by Residual/Balloon Payment (Original Lease Receivables)

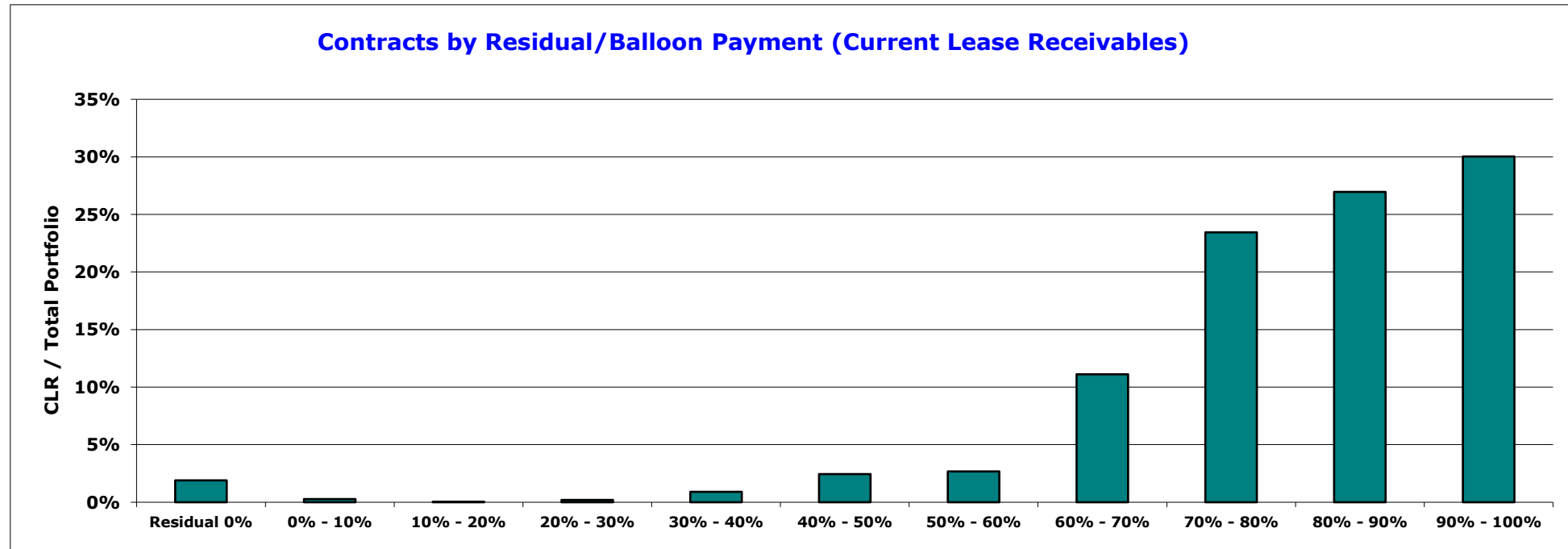
Residual Band (original)	Current Lease Receivable (CLR) (\$)	CLR / Total Portfolio (%)	Contracts No.	Contracts No. / Total Portfolio (%)
Residual 0%	1,936,228	1.90%	74	1.71%
0% - 10%	371,918	0.37%	18	0.42%
10% - 20%	930,731	0.91%	33	0.76%
20% - 30%	3,462,438	3.40%	109	2.52%
30% - 40%	6,907,622	6.78%	402	9.31%
40% - 50%	30,411,224	29.86%	1,420	32.89%
50% - 60%	35,087,700	34.45%	1,420	32.89%
60% - 70%	17,842,736	17.52%	655	15.17%
70% - 80%	4,784,076	4.70%	183	4.24%
80% - 90%	77,693	0.08%	3	0.07%
90% - 100%	37,054	0.04%	1	0.02%
Grand Total	101,849,420	100.00%	4,318	100.00%



**FP Ignition 2017-B Trust
as at 31 January 2019**

Contracts by Residual/Balloon Payment (Current Lease Receivables)

Residual Band (current)	Current Lease Receivable (CLR) (\$)	CLR / Total Portfolio (%)	Contracts No.	Contracts No. / Total Portfolio (%)
Residual 0%	1,936,228	1.90%	74	1.71%
0% - 10%	280,662	0.28%	4	0.09%
10% - 20%	43,150	0.04%	4	0.09%
20% - 30%	203,986	0.20%	6	0.14%
30% - 40%	922,379	0.91%	21	0.49%
40% - 50%	2,490,785	2.45%	47	1.09%
50% - 60%	2,727,280	2.68%	92	2.13%
60% - 70%	11,321,511	11.12%	416	9.63%
70% - 80%	23,878,999	23.45%	949	21.98%
80% - 90%	27,455,557	26.96%	1,160	26.86%
90% - 100%	30,588,881	30.03%	1,545	35.78%
Grand Total	101,849,420	100.00%	4,318	100.00%



FP Ignition 2017-B Trust
as at 31 January 2019

Contracts by New/Used

New/Used	Current Lease Receivable (CLR) (\$)	CLR / Total Portfolio (%)	Contracts No.	Contracts No. / Total Portfolio (%)
New	98,225,645	96.44%	4,134	95.74%
Used	3,623,775	3.56%	184	4.26%
Grand Total	101,849,420	100.00%	4,318	100.00%

