



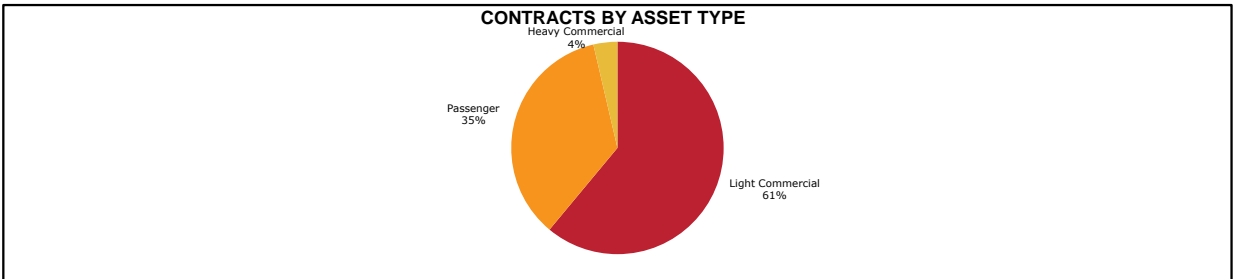
FP Ignition 2017-B Trust as at 31 July 2019

Portfolio Summary	
Portfolio size	\$ 46,234,067.00
Number of contracts	1,973
Number of obligors	702
Minimum implied margin incl. hedge rate (p.a.)	11.95%
Average contract balance (current)	\$ 23,433.38
Maximum contract balance (current)	\$ 109,519.87
Average contract balance (original)	\$ 39,016.68
Maximum contract balance (original)	\$ 203,357.09
Weighted average total contract term (months)	47.59
Weighted average seasoning (months)	38.62
Weighted average remaining term (months)	9.53
Maximum remaining term (months)	36.79
Weighted average residual (current)	85.33%
Weighted average residual (original)	51.25%
Maximum residual (original)	80.70%

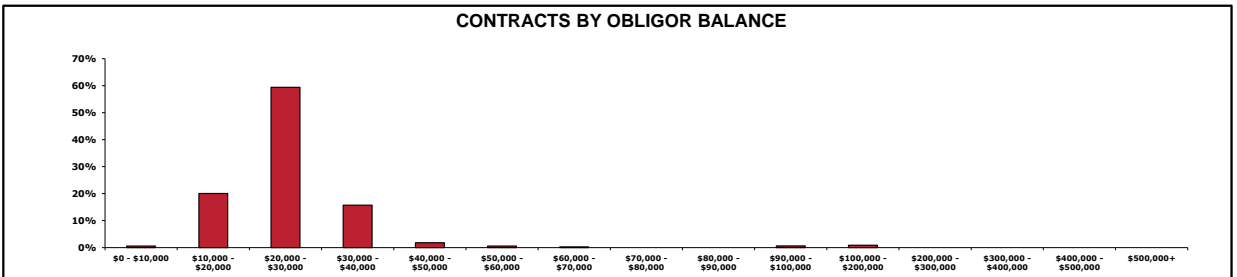
Contracts by Lease Type	Receivables Outstanding	(%) Receivables Outstanding	Number of Contracts	(%) Number of Contracts
Operating Lease	\$ 45,701,205.34	98.85%	1,947	98.68%
Finance Lease	\$ 532,861.66	1.15%	26	1.32%
Grand Total	\$ 46,234,067.00	100.00%	1,973	100.00%



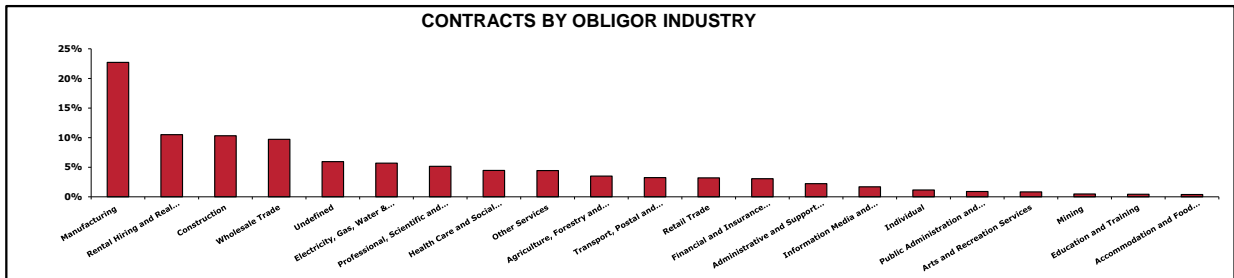
Contracts by Asset Type	Receivables Outstanding	(%) Receivables Outstanding	Number of Contracts	(%) Number of Contracts
Light Commercial	\$ 28,222,690.24	61.04%	1,116	56.56%
Passenger	\$ 16,326,547.07	35.31%	821	41.61%
Heavy Commercial	\$ 1,684,829.69	3.64%	36	1.82%
Grand Total	\$ 46,234,067.00	100.00%	1,973	100.00%



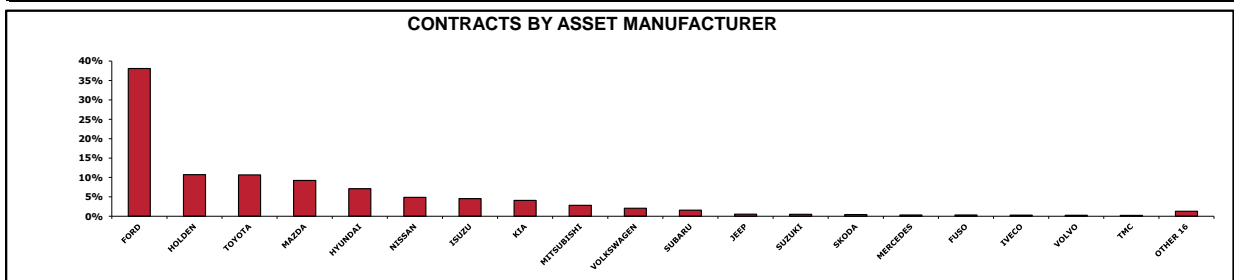
Contracts by Obligor Balance	Receivables Outstanding	(%) Receivables Outstanding	Number of Contracts	(%) Number of Contracts
\$0 - \$10,000	\$ 273,889.16	0.59%	67	3.40%
\$10,000 - \$20,000	\$ 9,269,582.12	20.05%	547	27.72%
\$20,000 - \$30,000	\$ 27,470,139.73	59.42%	1,106	56.06%
\$30,000 - \$40,000	\$ 7,271,242.35	15.73%	220	11.15%
\$40,000 - \$50,000	\$ 830,295.96	1.80%	19	0.96%
\$50,000 - \$60,000	\$ 281,934.70	0.61%	5	0.25%
\$60,000 - \$70,000	\$ 126,552.36	0.27%	2	0.10%
\$70,000 - \$80,000	\$ -	0.00%	0	0.00%
\$80,000 - \$90,000	\$ -	0.00%	0	0.00%
\$90,000 - \$100,000	\$ 289,188.56	0.63%	3	0.15%
\$100,000 - \$200,000	\$ 421,242.06	0.91%	4	0.20%
\$200,000 - \$300,000	\$ -	0.00%	0	0.00%
\$300,000 - \$400,000	\$ -	0.00%	0	0.00%
\$400,000 - \$500,000	\$ -	0.00%	0	0.00%
\$500,000+	\$ -	0.00%	0	0.00%
Grand Total	\$ 46,234,067.00	100.00%	1,973	100.00%



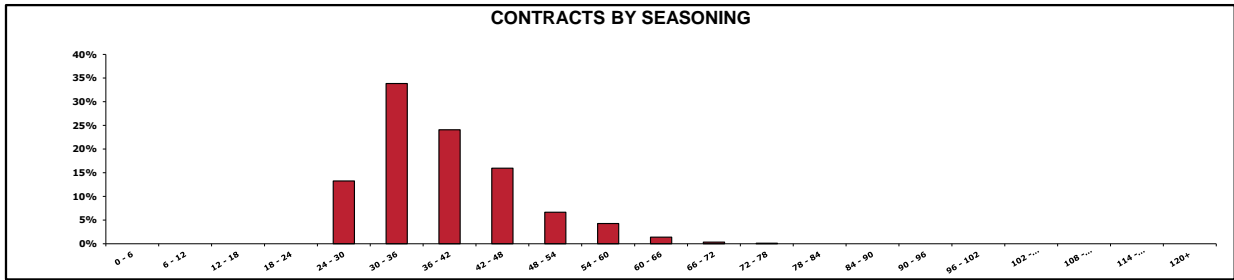
Contracts by Obligor Industry	Receivables Outstanding	(%) Receivables Outstanding	Number of Contracts	(%) Number of Contracts
Manufacturing	\$ 10,500,376.57	22.71%	475	24.08%
Rental Hiring and Real Estate Services	\$ 4,855,293.10	10.50%	204	10.34%
Construction	\$ 4,772,100.12	10.32%	198	10.04%
Wholesale Trade	\$ 4,493,618.09	9.72%	196	9.93%
Undefined	\$ 2,749,066.08	5.95%	112	5.68%
Electricity, Gas, Water & Waste Services	\$ 2,632,965.92	5.69%	104	5.27%
Professional, Scientific and Technical Services	\$ 2,379,814.68	5.15%	97	4.92%
Health Care and Social Assistance	\$ 2,058,189.87	4.45%	108	5.47%
Other Services	\$ 2,045,725.88	4.42%	80	4.05%
Agriculture, Forestry and Fishing	\$ 1,613,984.28	3.49%	65	3.29%
Transport, Postal and Warehousing	\$ 1,502,225.10	3.25%	65	3.29%
Retail Trade	\$ 1,479,776.26	3.20%	58	2.94%
Financial and Insurance Services	\$ 1,415,878.92	3.06%	60	3.04%
Administrative and Support Services	\$ 1,029,386.21	2.23%	43	2.18%
Information Media and Telecommunications	\$ 779,647.51	1.69%	36	1.82%
Individual	\$ 536,622.03	1.16%	20	1.01%
Public Administration and Safety	\$ 411,079.51	0.89%	14	0.71%
Arts and Recreation Services	\$ 380,930.24	0.82%	17	0.86%
Mining	\$ 220,491.40	0.48%	7	0.35%
Education and Training	\$ 203,142.65	0.44%	7	0.35%
Accommodation and Food Services	\$ 173,752.58	0.38%	7	0.35%
Grand Total	\$ 46,234,067.00	100.00%	1,973	100.00%



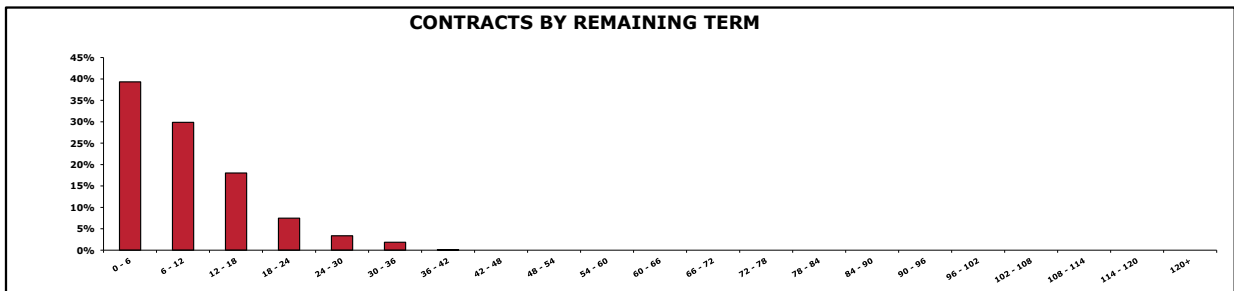
Contracts by Asset Manufacturer	Receivables Outstanding	(%) Receivables Outstanding	Number of Contracts	(%) Number of Contracts
FORD	\$ 17,609,768.77	38.09%	679	34.41%
HOLDEN	\$ 4,962,485.92	10.73%	211	10.69%
TOYOTA	\$ 4,920,738.64	10.64%	209	10.59%
MAZDA	\$ 4,267,272.51	9.23%	202	10.24%
HYUNDAI	\$ 3,278,830.68	7.09%	188	9.53%
NISSAN	\$ 2,243,803.97	4.85%	105	5.32%
ISUZU	\$ 2,107,453.40	4.56%	73	3.70%
KIA	\$ 1,892,953.81	4.09%	89	4.51%
MITSUBISHI	\$ 1,299,966.07	2.81%	73	3.70%
VOLKSWAGEN	\$ 962,935.31	2.08%	37	1.88%
SUBARU	\$ 730,006.31	1.58%	39	1.98%
JEEP	\$ 256,858.17	0.56%	6	0.30%
SUZUKI	\$ 231,465.26	0.50%	17	0.86%
SKODA	\$ 200,485.40	0.43%	11	0.56%
MERCEDES	\$ 156,538.71	0.34%	5	0.25%
FUSO	\$ 153,814.88	0.33%	2	0.10%
IVECO	\$ 135,744.97	0.29%	2	0.10%
VOLVO	\$ 125,085.56	0.27%	3	0.15%
TMC	\$ 103,682.95	0.22%	1	0.05%
OTHER 16	\$ 594,175.71	1.29%	21	1.06%
Grand Total	\$ 46,234,067.00	100.00%	1,973	100.00%



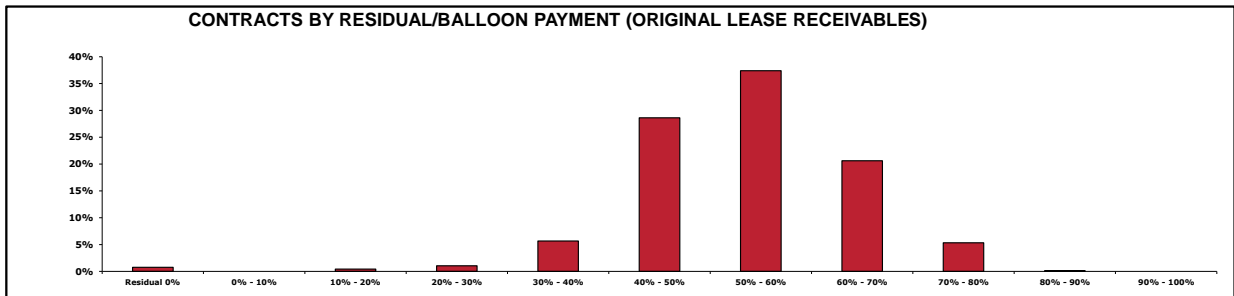
Contracts by Seasoning (Months)	Receivables Outstanding	(%) Receivables Outstanding	Number of Contracts	(%) Number of Contracts
0 - 6	\$ -	0.00%	0	0.00%
6 - 12	\$ -	0.00%	0	0.00%
12 - 18	\$ -	0.00%	0	0.00%
18 - 24	\$ -	0.00%	0	0.00%
24 - 30	\$ 6,135,166.33	13.27%	211	10.69%
30 - 36	\$ 15,651,302.41	33.85%	649	32.89%
36 - 42	\$ 11,132,638.94	24.08%	468	23.72%
42 - 48	\$ 7,376,569.67	15.95%	348	17.64%
48 - 54	\$ 3,081,795.47	6.67%	139	7.05%
54 - 60	\$ 1,981,921.52	4.29%	107	5.42%
60 - 66	\$ 651,775.32	1.41%	38	1.93%
66 - 72	\$ 164,870.50	0.36%	9	0.46%
72 - 78	\$ 58,026.84	0.13%	4	0.20%
78 - 84	\$ -	0.00%	0	0.00%
84 - 90	\$ -	0.00%	0	0.00%
90 - 96	\$ -	0.00%	0	0.00%
96 - 102	\$ -	0.00%	0	0.00%
102 - 108	\$ -	0.00%	0	0.00%
108 - 114	\$ -	0.00%	0	0.00%
114 - 120	\$ -	0.00%	0	0.00%
120+	\$ -	0.00%	0	0.00%
Grand Total	\$ 46,234,067.00	100.00%	1,973	100.00%



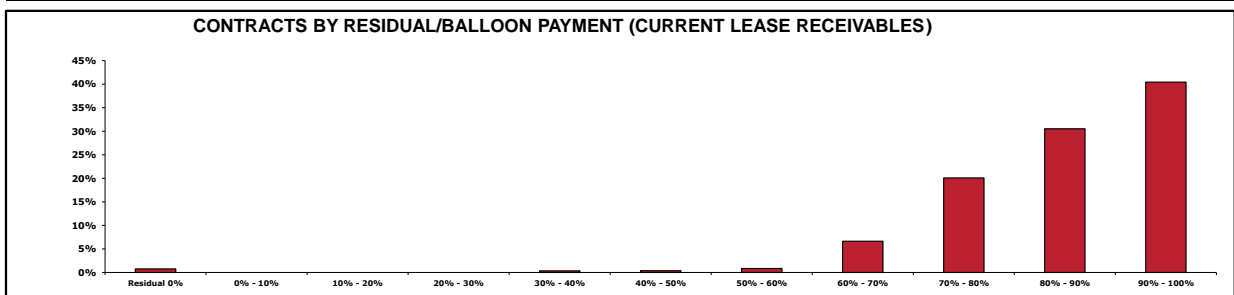
Contracts by Remaining Term (Months)	Receivables Outstanding	(%) Receivables Outstanding	Number of Contracts	(%) Number of Contracts
0 - 6	\$ 18,181,476.40	39.32%	827	41.92%
6 - 12	\$ 13,805,398.97	29.86%	617	31.27%
12 - 18	\$ 8,330,507.03	18.02%	331	16.78%
18 - 24	\$ 3,454,487.16	7.47%	122	6.18%
24 - 30	\$ 1,551,262.51	3.36%	52	2.64%
30 - 36	\$ 855,803.18	1.85%	22	1.12%
36 - 42	\$ 55,131.75	0.12%	2	0.10%
42 - 48	\$ -	0.00%	0	0.00%
48 - 54	\$ -	0.00%	0	0.00%
54 - 60	\$ -	0.00%	0	0.00%
60 - 66	\$ -	0.00%	0	0.00%
66 - 72	\$ -	0.00%	0	0.00%
72 - 78	\$ -	0.00%	0	0.00%
78 - 84	\$ -	0.00%	0	0.00%
84 - 90	\$ -	0.00%	0	0.00%
90 - 96	\$ -	0.00%	0	0.00%
96 - 102	\$ -	0.00%	0	0.00%
102 - 108	\$ -	0.00%	0	0.00%
108 - 114	\$ -	0.00%	0	0.00%
114 - 120	\$ -	0.00%	0	0.00%
120+	\$ -	0.00%	0	0.00%
Grand Total	\$ 46,234,067.00	100.00%	1,973	100.00%



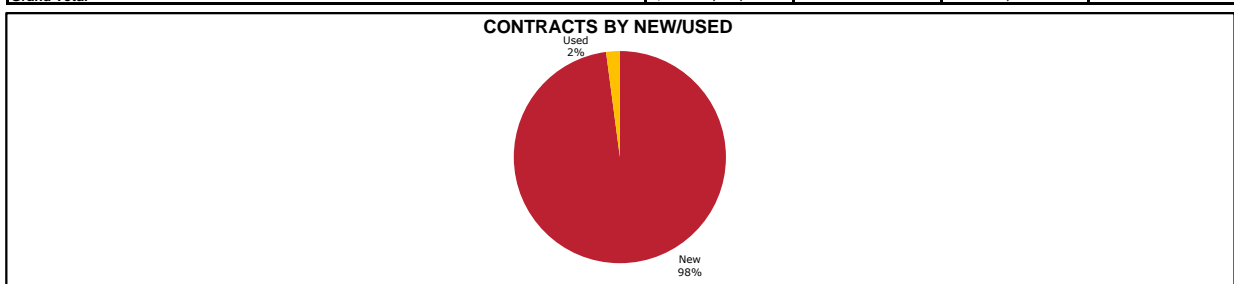
Contracts by Residual/Balloon Payment (Original Lease Receivables)	Receivables Outstanding	(%) Receivables Outstanding	Number of Contracts	(%) Number of Contracts
Residual 0%	\$ 349,835.81	0.76%	21	1.06%
0% - 10%	\$ -	0.00%	0	0.00%
10% - 20%	\$ 195,016.62	0.42%	34	1.72%
20% - 30%	\$ 486,141.23	1.05%	41	2.08%
30% - 40%	\$ 2,615,225.54	5.66%	140	7.10%
40% - 50%	\$ 13,237,655.42	28.63%	581	29.45%
50% - 60%	\$ 17,292,125.03	37.40%	696	35.28%
60% - 70%	\$ 9,536,555.23	20.63%	369	18.70%
70% - 80%	\$ 2,462,169.32	5.33%	89	4.51%
80% - 90%	\$ 59,342.80	0.13%	2	0.10%
90% - 100%	\$ -	0.00%	0	0.00%
Grand Total	\$ 46,234,067.00	100.00%	1,973	100.00%



Contracts by Residual/Balloon Payment (Current Lease Receivables)	Receivables Outstanding	(%) Receivables Outstanding	Number of Contracts	(%) Number of Contracts
Residual 0%	\$ 349,835.81	0.76%	21	1.06%
0% - 10%	\$ -	0.00%	0	0.00%
10% - 20%	\$ -	0.00%	0	0.00%
20% - 30%	\$ -	0.00%	0	0.00%
30% - 40%	\$ 161,689.77	0.35%	4	0.20%
40% - 50%	\$ 172,584.58	0.37%	6	0.30%
50% - 60%	\$ 393,899.64	0.85%	13	0.66%
60% - 70%	\$ 3,072,897.05	6.65%	105	5.32%
70% - 80%	\$ 9,287,559.16	20.09%	359	18.20%
80% - 90%	\$ 14,105,838.15	30.51%	593	30.06%
90% - 100%	\$ 18,689,762.84	40.42%	872	44.20%
Grand Total	\$ 46,234,067.00	100.00%	1,973	100.00%



Contracts by New/Used	Receivables Outstanding	(%) Receivables Outstanding	Number of Contracts	(%) Number of Contracts
New	\$ 45,269,259.06	97.91%	1,902	96.40%
Used	\$ 964,807.94	2.09%	71	3.60%
Grand Total	\$ 46,234,067.00	100.00%	1,973	100.00%



Trust Manager Contact Details	
Anthony Tisseverasinghe Senior Treasury Analyst Level 3, 40 River Blvd Richmond VIC 3121 Telephone: +61 3 8416 5407 Email: anthony.tisseverasinghe@eclipx.com	Kam Dyal Treasury Manager Level 3, 40 River Blvd Richmond VIC 3121 Telephone: +61 3 8416 5317 Email: kam.dyal@eclipx.com
Fleet Partners Limited Level 3, 40 River Boulevard Richmond, VIC 3121 Email: treasury@eclipx.com	