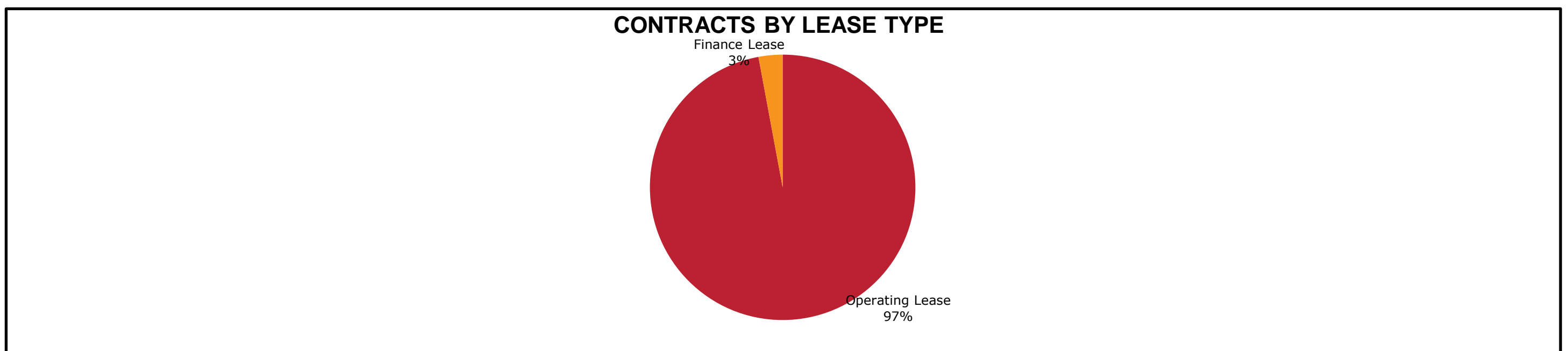




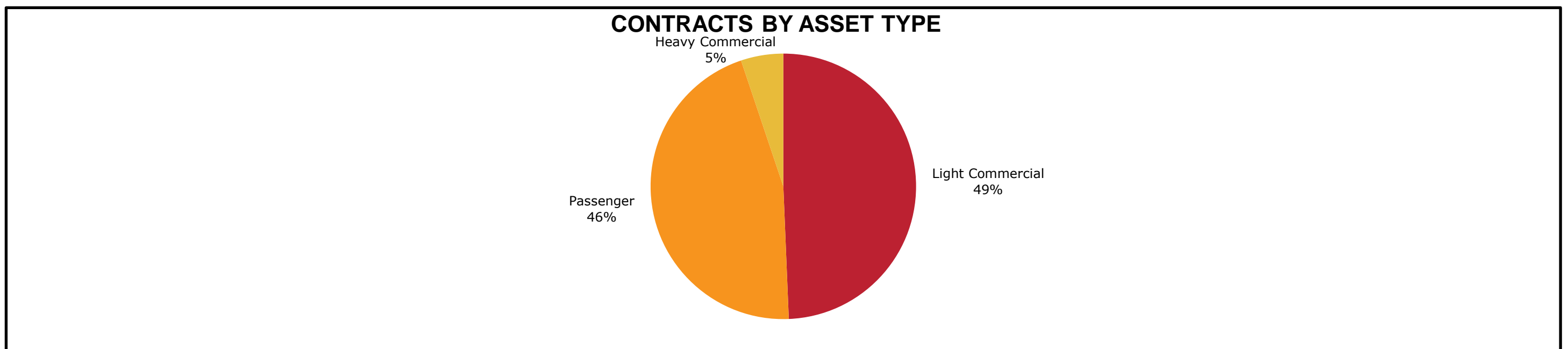
### FP Ignition 2017-B Trust as at 31 May 2019

Portfolio Summary	
Portfolio size	\$ 70,590,423.53
Number of contracts	3,123
Number of obligors	1,019
Minimum implied margin incl. hedge rate (p.a.)	11.90%
Average contract balance (current)	\$ 22,603.40
Maximum contract balance (current)	\$ 187,475.50
Average contract balance (original)	\$ 38,030.91
Maximum contract balance (original)	\$ 260,950.84
Weighted average total contract term (months)	44.98
Weighted average seasoning (months)	37.11
Weighted average remaining term (months)	9.70
Maximum remaining term (months)	58.06
Weighted average residual (current)	84.09%
Weighted average residual (original)	49.98%
Maximum residual (original)	80.70%

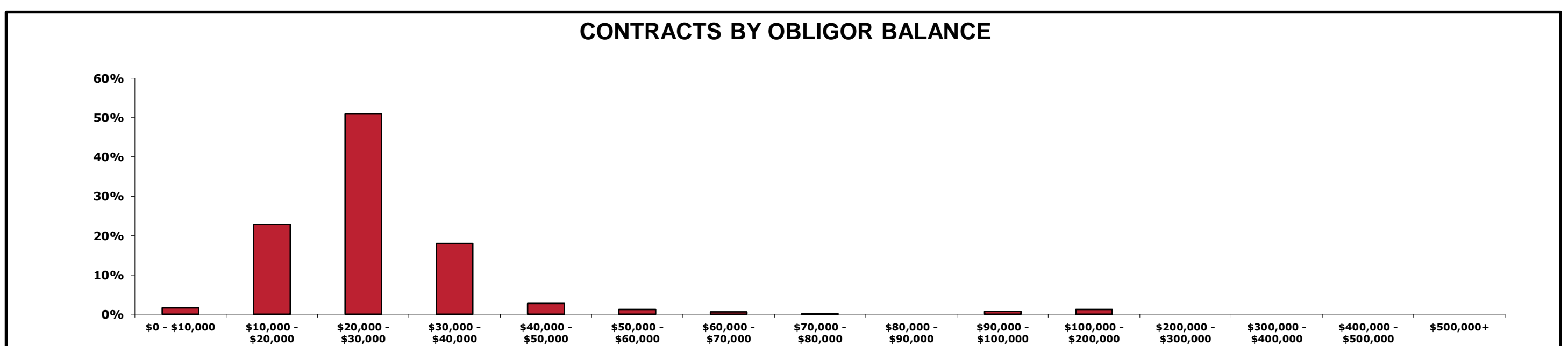
Contracts by Lease Type	Receivables Outstanding	(%) Receivables Outstanding	Number of Contracts	(%) Number of Contracts
Operating Lease	\$ 68,529,309.47	97.08%	3,046	97.53%
Finance Lease	\$ 2,061,114.06	2.92%	77	2.47%
<b>Grand Total</b>	<b>\$ 70,590,423.53</b>	<b>100.00%</b>	<b>3,123</b>	<b>100.00%</b>



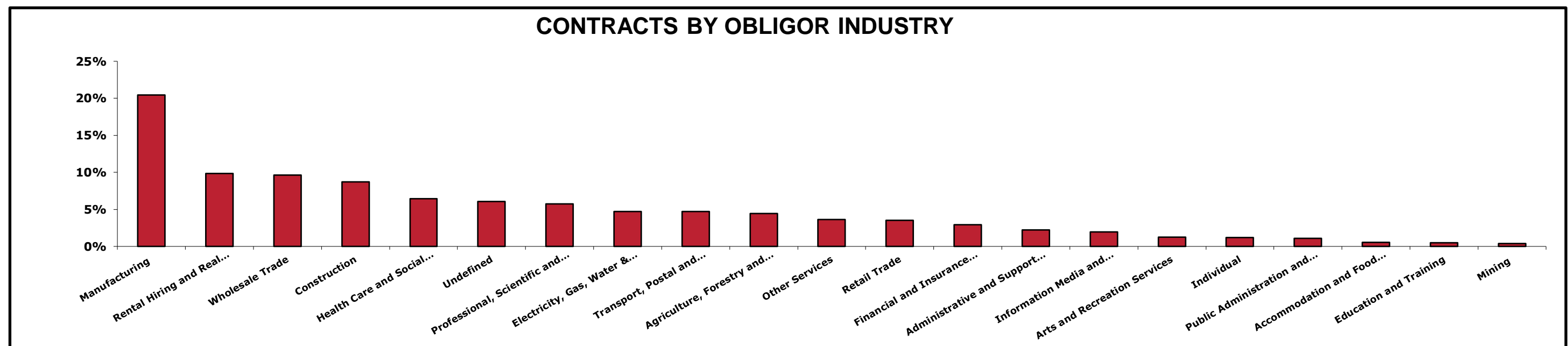
Contracts by Asset Type	Receivables Outstanding	(%) Receivables Outstanding	Number of Contracts	(%) Number of Contracts
Light Commercial	\$ 34,831,354.80	49.34%	1,357	43.45%
Passenger	\$ 32,116,274.37	45.50%	1,695	54.27%
Heavy Commercial	\$ 3,642,794.37	5.16%	71	2.27%
<b>Grand Total</b>	<b>\$ 70,590,423.53</b>	<b>100.00%</b>	<b>3,123</b>	<b>100.00%</b>



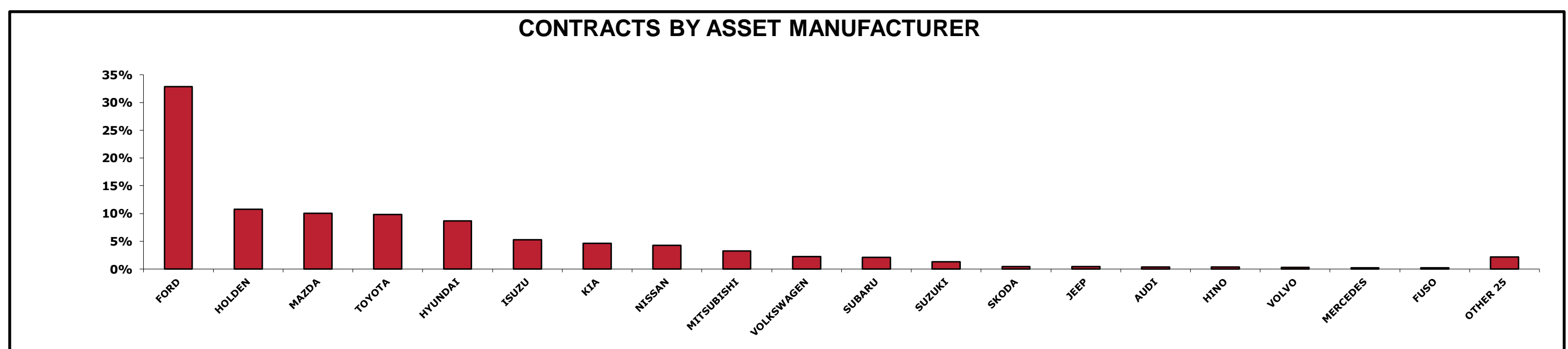
Contracts by Obligor Balance	Receivables Outstanding	(%) Receivables Outstanding	Number of Contracts	(%) Number of Contracts
\$0 - \$10,000	\$ 1,111,289.65	1.57%	170	5.44%
\$10,000 - \$20,000	\$ 16,169,402.27	22.91%	1,037	33.21%
\$20,000 - \$30,000	\$ 35,977,757.47	50.97%	1,454	46.56%
\$30,000 - \$40,000	\$ 12,678,724.32	17.96%	381	12.20%
\$40,000 - \$50,000	\$ 1,929,252.46	2.73%	45	1.44%
\$50,000 - \$60,000	\$ 864,462.24	1.22%	16	0.51%
\$60,000 - \$70,000	\$ 445,415.89	0.63%	7	0.22%
\$70,000 - \$80,000	\$ 76,734.32	0.11%	1	0.03%
\$80,000 - \$90,000	\$ -	0.00%	0	0.00%
\$90,000 - \$100,000	\$ 480,126.61	0.68%	5	0.16%
\$100,000 - \$200,000	\$ 857,258.30	1.21%	7	0.22%
\$200,000 - \$300,000	\$ -	0.00%	0	0.00%
\$300,000 - \$400,000	\$ -	0.00%	0	0.00%
\$400,000 - \$500,000	\$ -	0.00%	0	0.00%
\$500,000+	\$ -	0.00%	0	0.00%
<b>Grand Total</b>	<b>\$ 70,590,423.53</b>	<b>100.00%</b>	<b>3,123</b>	<b>100.00%</b>



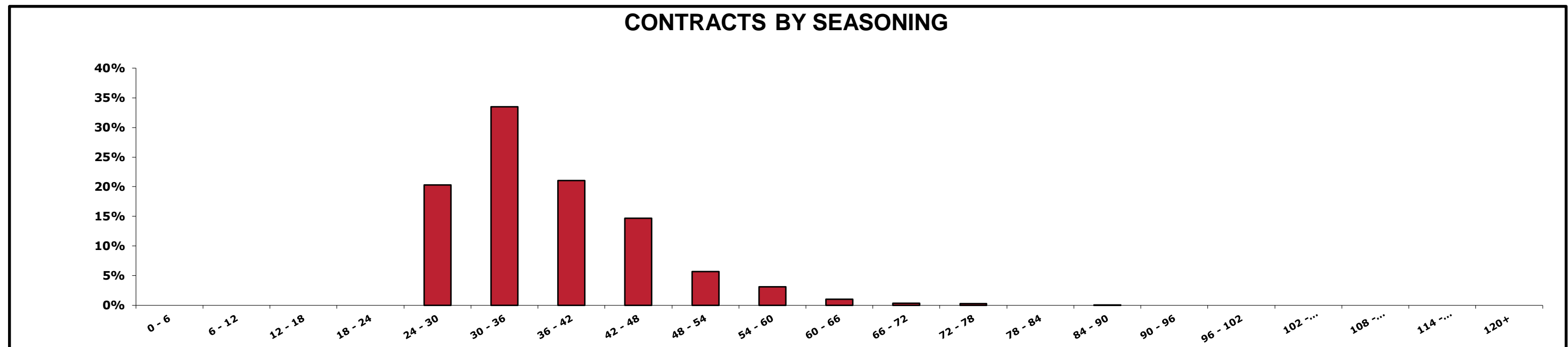
Contracts by Obligor Industry	Receivables Outstanding	(%) Receivables Outstanding	Number of Contracts	(%) Number of Contracts
Manufacturing	\$ 14,441,460.56	20.46%	639	20.46%
Rental Hiring and Real Estate Services	\$ 6,949,832.71	9.85%	280	8.97%
Wholesale Trade	\$ 6,805,522.64	9.64%	316	10.12%
Construction	\$ 6,146,826.38	8.71%	252	8.07%
Health Care and Social Assistance	\$ 4,531,997.46	6.42%	290	9.29%
Undefined	\$ 4,267,848.10	6.05%	180	5.76%
Professional, Scientific and Technical Services	\$ 4,039,079.69	5.72%	167	5.35%
Electricity, Gas, Water & Waste Services	\$ 3,339,176.78	4.73%	133	4.26%
Transport, Postal and Warehousing	\$ 3,333,817.05	4.72%	158	5.06%
Agriculture, Forestry and Fishing	\$ 3,153,380.03	4.47%	121	3.87%
Other Services	\$ 2,569,203.64	3.64%	98	3.14%
Retail Trade	\$ 2,498,093.61	3.54%	104	3.33%
Financial and Insurance Services	\$ 2,074,942.84	2.94%	90	2.88%
Administrative and Support Services	\$ 1,560,048.23	2.21%	64	2.05%
Information Media and Telecommunications	\$ 1,362,713.03	1.93%	76	2.43%
Arts and Recreation Services	\$ 897,903.09	1.27%	45	1.44%
Individual	\$ 828,615.44	1.17%	32	1.02%
Public Administration and Safety	\$ 774,194.46	1.10%	39	1.25%
Accommodation and Food Services	\$ 371,518.70	0.53%	16	0.51%
Education and Training	\$ 364,490.10	0.52%	14	0.45%
Mining	\$ 279,758.99	0.40%	9	0.29%
<b>Grand Total</b>	<b>\$ 70,590,423.53</b>	<b>100.00%</b>	<b>3,123</b>	<b>100.00%</b>



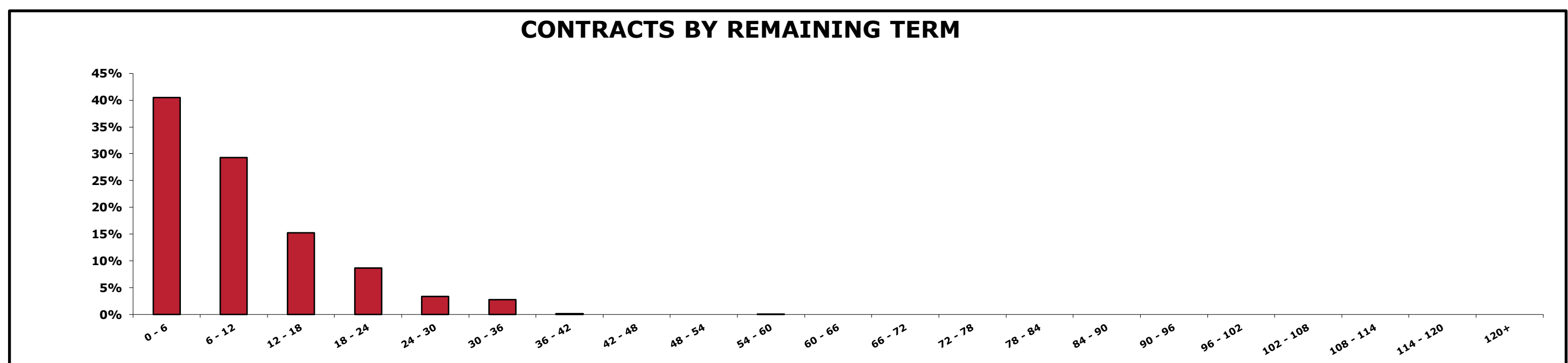
Contracts by Asset Manufacturer	Receivables Outstanding	(%) Receivables Outstanding	Number of Contracts	(%) Number of Contracts
FORD	\$ 23,202,757.58	32.87%	891	28.53%
HOLDEN	\$ 7,623,992.04	10.80%	346	11.08%
MAZDA	\$ 7,104,417.24	10.06%	336	10.76%
TOYOTA	\$ 6,947,389.16	9.84%	316	10.12%
HYUNDAI	\$ 6,132,727.22	8.69%	376	12.04%
ISUZU	\$ 3,728,363.11	5.28%	117	3.75%
KIA	\$ 3,259,323.92	4.62%	156	5.00%
NISSAN	\$ 3,030,157.35	4.29%	142	4.55%
MITSUBISHI	\$ 2,312,711.86	3.28%	137	4.39%
VOLKSWAGEN	\$ 1,582,815.80	2.24%	63	2.02%
SUBARU	\$ 1,466,782.64	2.08%	76	2.43%
SUZUKI	\$ 928,223.70	1.31%	81	2.59%
SKODA	\$ 329,660.14	0.47%	18	0.58%
JEEP	\$ 323,527.51	0.46%	8	0.26%
AUDI	\$ 282,557.60	0.40%	7	0.22%
HINO	\$ 247,828.26	0.35%	2	0.06%
VOLVO	\$ 199,806.15	0.28%	5	0.16%
MERCEDES	\$ 184,574.89	0.26%	6	0.19%
FUSO	\$ 157,842.79	0.22%	2	0.06%
OTHER 25	\$ 1,544,964.57	2.19%	38	1.22%
<b>Grand Total</b>	<b>\$ 70,590,423.53</b>	<b>100.00%</b>	<b>3,123</b>	<b>100.00%</b>



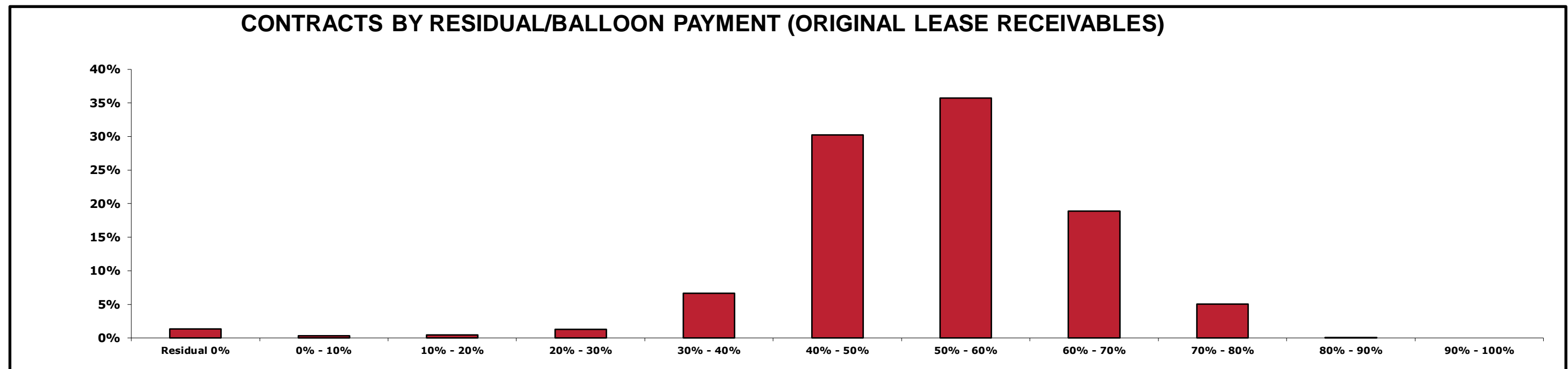
Contracts by Seasoning (Months)	Receivables Outstanding	(%) Receivables Outstanding	Number of Contracts	(%) Number of Contracts
0 - 6	\$ -	0.00%	0	0.00%
6 - 12	\$ -	0.00%	0	0.00%
12 - 18	\$ -	0.00%	0	0.00%
18 - 24	\$ -	0.00%	0	0.00%
24 - 30	\$ 14,355,139.38	20.34%	532	17.03%
30 - 36	\$ 23,616,723.14	33.46%	984	31.51%
36 - 42	\$ 14,867,763.35	21.06%	683	21.87%
42 - 48	\$ 10,347,030.83	14.66%	513	16.43%
48 - 54	\$ 4,017,388.31	5.69%	217	6.95%
54 - 60	\$ 2,219,849.14	3.14%	130	4.16%
60 - 66	\$ 707,336.99	1.00%	40	1.28%
66 - 72	\$ 242,851.86	0.34%	12	0.38%
72 - 78	\$ 182,233.70	0.26%	11	0.35%
78 - 84	\$ -	0.00%	0	0.00%
84 - 90	\$ 34,106.83	0.05%	1	0.03%
90 - 96	\$ -	0.00%	0	0.00%
96 - 102	\$ -	0.00%	0	0.00%
102 - 108	\$ -	0.00%	0	0.00%
108 - 114	\$ -	0.00%	0	0.00%
114 - 120	\$ -	0.00%	0	0.00%
120+	\$ -	0.00%	0	0.00%
<b>Grand Total</b>	<b>\$ 70,590,423.53</b>	<b>100.00%</b>	<b>3,123</b>	<b>100.00%</b>



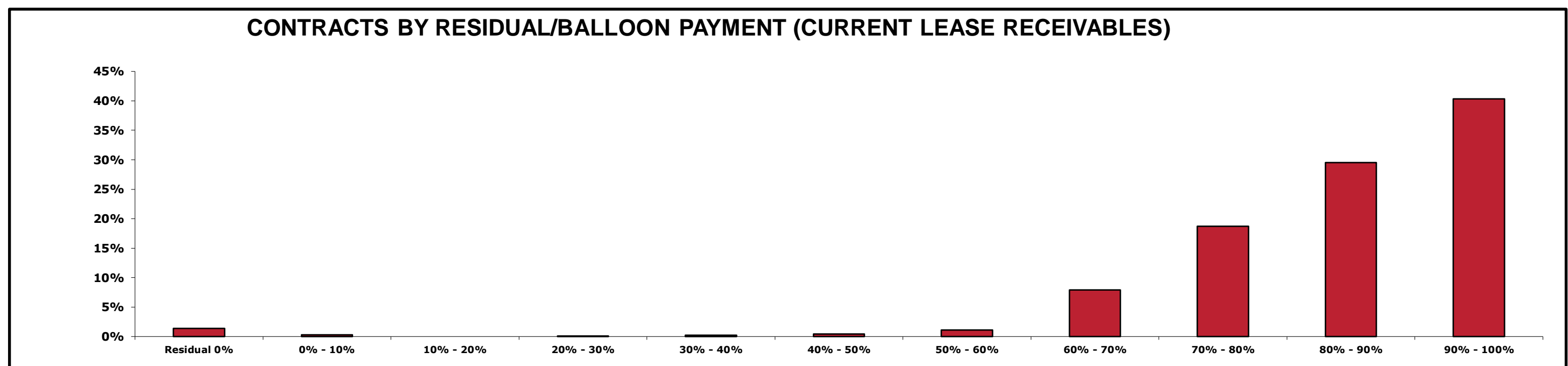
Contracts by Remaining Term (Months)	Receivables Outstanding	(%) Receivables Outstanding	Number of Contracts	(%) Number of Contracts
0 - 6	\$ 28,586,849.11	40.50%	1,470	47.07%
6 - 12	\$ 20,686,475.51	29.30%	897	28.72%
12 - 18	\$ 10,743,912.53	15.22%	418	13.38%
18 - 24	\$ 6,106,840.83	8.65%	220	7.04%
24 - 30	\$ 2,371,231.77	3.36%	63	2.02%
30 - 36	\$ 1,961,190.58	2.78%	51	1.63%
36 - 42	\$ 84,696.48	0.12%	3	0.10%
42 - 48	\$ -	0.00%	0	0.00%
48 - 54	\$ -	0.00%	0	0.00%
54 - 60	\$ 49,226.73	0.07%	1	0.03%
60 - 66	\$ -	0.00%	0	0.00%
66 - 72	\$ -	0.00%	0	0.00%
72 - 78	\$ -	0.00%	0	0.00%
78 - 84	\$ -	0.00%	0	0.00%
84 - 90	\$ -	0.00%	0	0.00%
90 - 96	\$ -	0.00%	0	0.00%
96 - 102	\$ -	0.00%	0	0.00%
102 - 108	\$ -	0.00%	0	0.00%
108 - 114	\$ -	0.00%	0	0.00%
114 - 120	\$ -	0.00%	0	0.00%
120+	\$ -	0.00%	0	0.00%
<b>Grand Total</b>	<b>\$ 70,590,423.53</b>	<b>100.00%</b>	<b>3,123</b>	<b>100.00%</b>



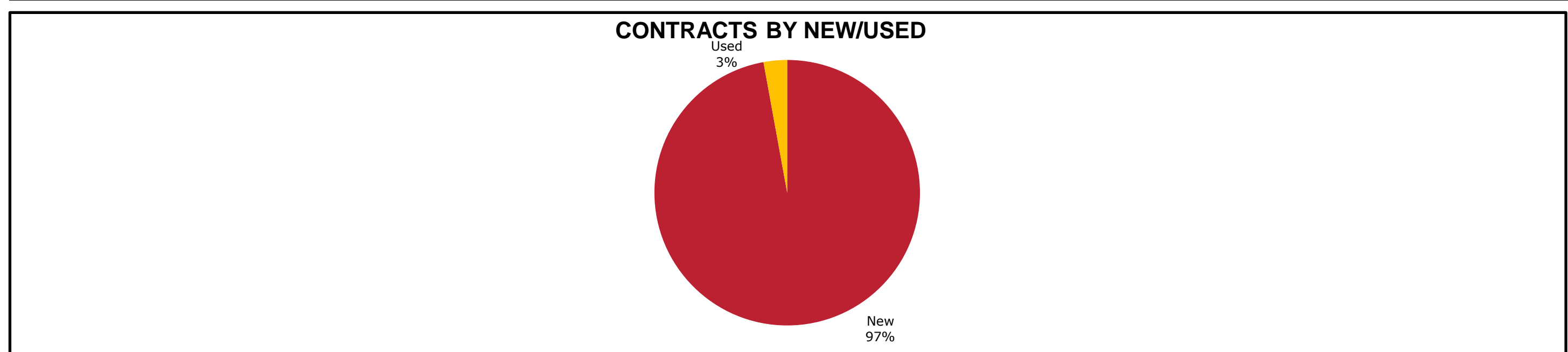
Contracts by Residual/Balloon Payment (Original Lease Receivables)	Receivables Outstanding	(%) Receivables Outstanding	Number of Contracts	(%) Number of Contracts
Residual 0%	\$ 960,155.88	1.36%	38	1.22%
0% - 10%	\$ 216,550.66	0.31%	5	0.16%
10% - 20%	\$ 322,128.93	0.46%	26	0.83%
20% - 30%	\$ 892,312.29	1.26%	85	2.72%
30% - 40%	\$ 4,690,253.63	6.64%	281	9.00%
40% - 50%	\$ 21,346,399.05	30.24%	996	31.89%
50% - 60%	\$ 25,240,121.14	35.76%	1,044	33.43%
60% - 70%	\$ 13,326,436.42	18.88%	505	16.17%
70% - 80%	\$ 3,568,573.53	5.06%	142	4.55%
80% - 90%	\$ 27,492.01	0.04%	1	0.03%
90% - 100%	\$ -	0.00%	0	0.00%
<b>Grand Total</b>	<b>\$ 70,590,423.53</b>	<b>100.00%</b>	<b>3,123</b>	<b>100.00%</b>



Contracts by Residual/Balloon Payment (Current Lease Receivables)	Receivables Outstanding	(%) Receivables Outstanding	Number of Contracts	(%) Number of Contracts
Residual 0%	\$ 960,155.88	1.36%	38	1.22%
0% - 10%	\$ 207,795.83	0.29%	2	0.06%
10% - 20%	\$ -	0.00%	0	0.00%
20% - 30%	\$ 49,226.73	0.07%	1	0.03%
30% - 40%	\$ 168,927.58	0.24%	4	0.13%
40% - 50%	\$ 295,624.19	0.42%	12	0.38%
50% - 60%	\$ 805,125.45	1.14%	32	1.02%
60% - 70%	\$ 5,558,232.10	7.87%	190	6.08%
70% - 80%	\$ 13,206,714.49	18.71%	524	16.78%
80% - 90%	\$ 20,860,434.67	29.55%	902	28.88%
90% - 100%	\$ 28,478,186.61	40.34%	1,418	45.41%
<b>Grand Total</b>	<b>\$ 70,590,423.53</b>	<b>100.00%</b>	<b>3,123</b>	<b>100.00%</b>



Contracts by New/Used	Receivables Outstanding	(%) Receivables Outstanding	Number of Contracts	(%) Number of Contracts
New	\$ 68,570,920.96	97.14%	2,997	95.97%
Used	\$ 2,019,502.57	2.86%	126	4.03%
<b>Grand Total</b>	<b>\$ 70,590,423.53</b>	<b>100.00%</b>	<b>3,123</b>	<b>100.00%</b>



Trust Manager Contact Details	
Anthony Tisseverasinghe Senior Treasury Analyst Level 3, 40 River Blvd Richmond VIC 3121 Telephone: +61 3 8416 5407 Email: anthony.tisseverasinghe@eclipx.com	Kam Dyall Treasury Manager Level 3, 40 River Blvd Richmond VIC 3121 Telephone: +61 3 8416 5317 Email: kam.dyall@eclipx.com
<b>Fleet Partners Limited</b> Level 3, 40 River Boulevard Richmond, VIC 3121 Email: treasury@eclipx.com	