

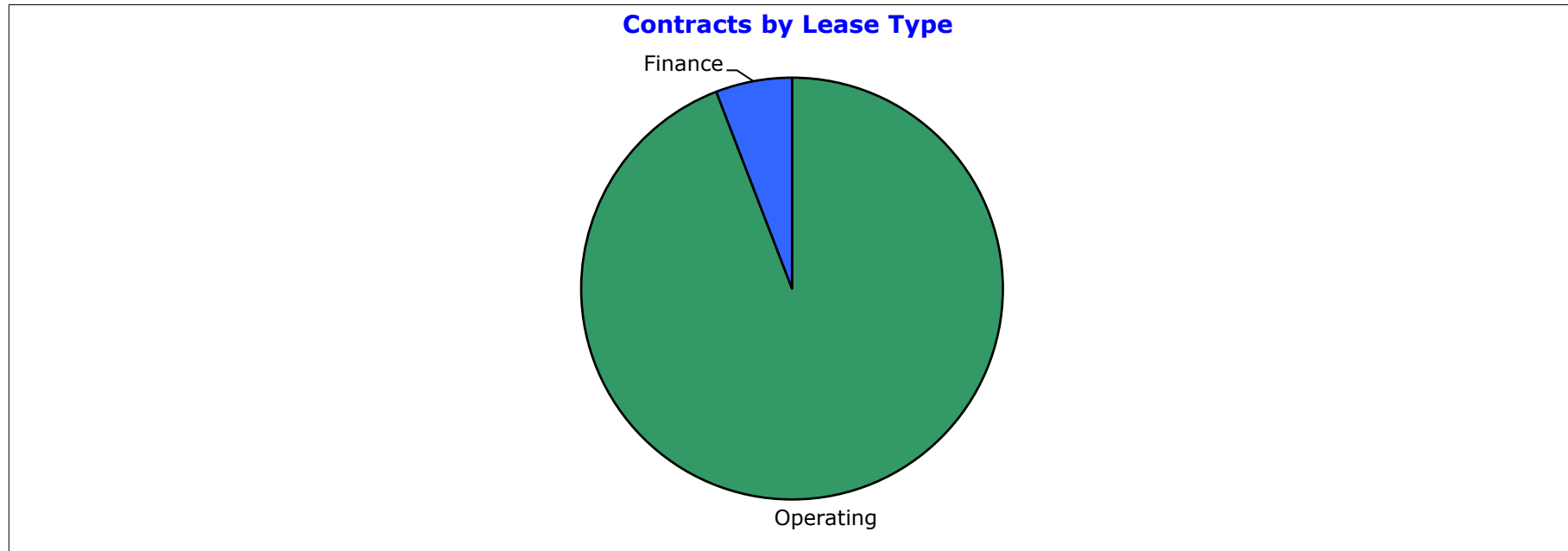
**FP Ignition 2017-B Trust
as at 30 November 2017**

Portfolio Summary	
Portfolio size	\$192,291,715
Number of contracts	7,289
Number of obligors	1,898
Minimum implied margin incl. hedge rate (p.a.)	10.35%
Average contract balance (current)	\$26,381
Maximum contract balance (current)	\$265,226
Average contract balance (original)	\$37,172
Maximum contract balance (original)	\$323,645
Weighted average total contract term (months)	43.25
Weighted average seasoning (months)	24.36
Weighted average remaining term (months)	18.91
Maximum remaining term (months)	76.04
Weighted average residual (current)	70.98%
Weighted average residual (original)	50.38%
Maximum residual (original)	95.46%

FP Ignition 2017-B Trust
as at 30 November 2017

Contracts by Lease Type

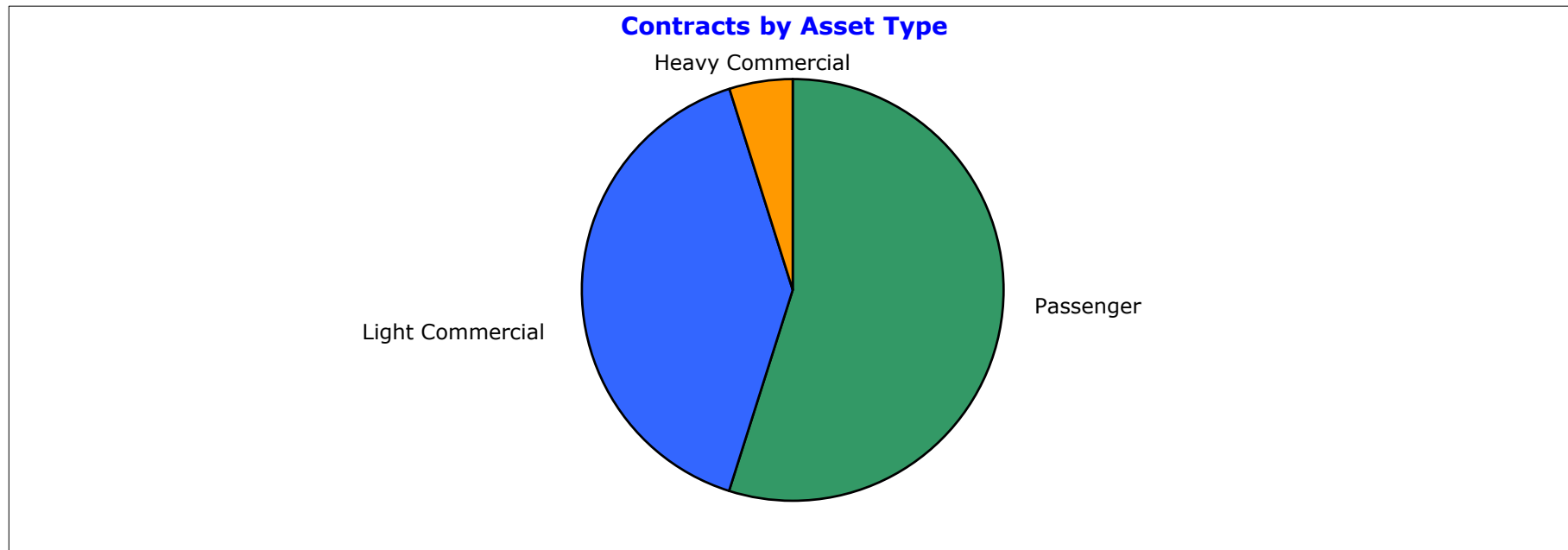
Lease Category	Current Lease Receivable (CLR) (\$)	CLR / Total Portfolio (%)	Contracts No.	Contracts No. / Total Portfolio (%)
Operating	181,041,357	94.15%	7,030	96.45%
Finance	11,250,358	5.85%	259	3.55%
Grand Total	192,291,715	100.00%	7,289	100.00%



**FP Ignition 2017-B Trust
as at 30 November 2017**

Contracts by Asset Type

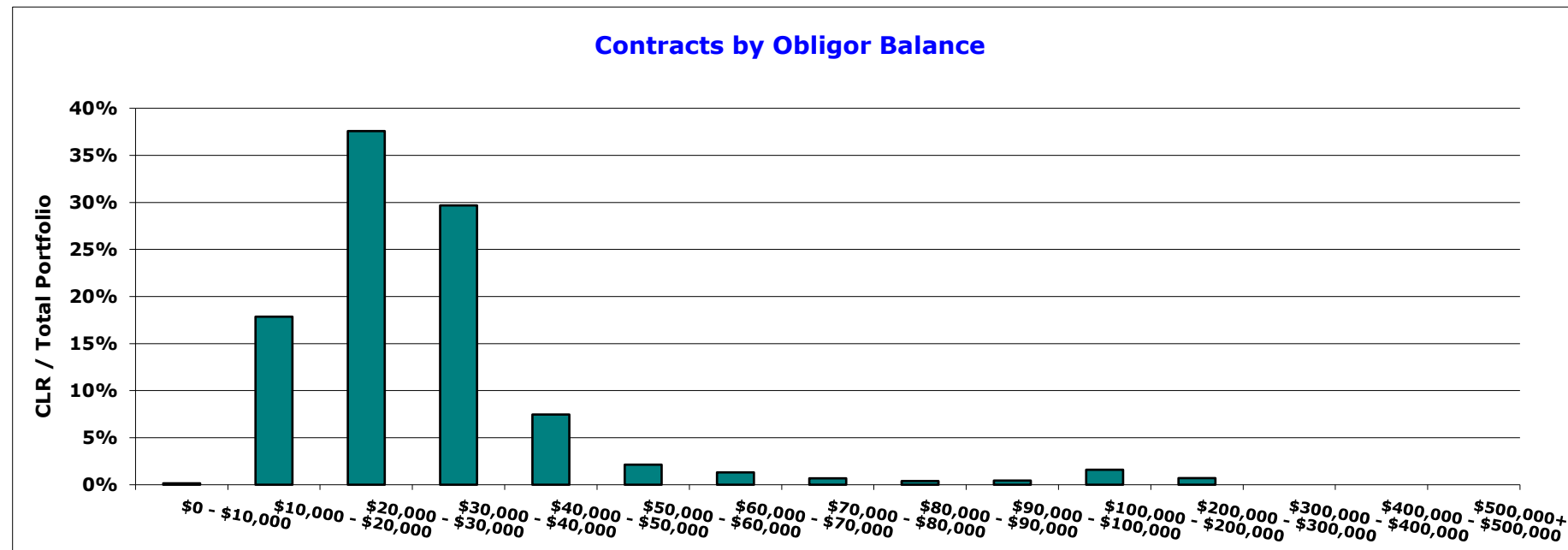
Asset Type	Current Lease Receivable (CLR) (\$)	CLR / Total Portfolio (%)	Contracts No.	Contracts No. / Total Portfolio (%)
Passenger	105,536,272	54.88%	4,549	62.41%
Light Commercial	77,419,826	40.26%	2,614	35.86%
Heavy Commercial	9,335,618	4.85%	126	1.73%
Grand Total	192,291,715	100.00%	7,289	100.00%



FP Ignition 2017-B Trust
as at 30 November 2017

Contracts by Obligor Balance

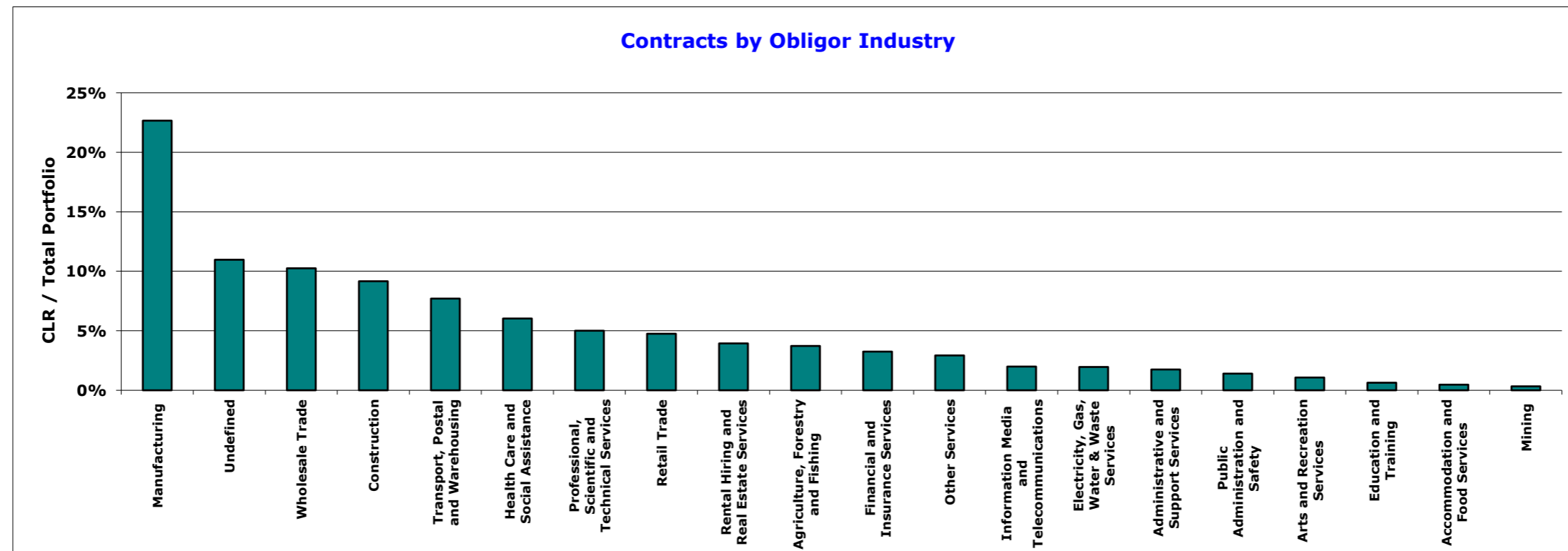
Obligor Balance	Current Lease Receivable (CLR) (\$)	CLR / Total Portfolio (%)	Contracts No.	Contracts No. / Total Portfolio (%)
\$0 - \$10,000	292,236	0.15%	31	0.43%
\$10,000 - \$20,000	34,339,017	17.86%	2,180	29.91%
\$20,000 - \$30,000	72,264,590	37.58%	2,899	39.77%
\$30,000 - \$40,000	57,075,339	29.68%	1,674	22.97%
\$40,000 - \$50,000	14,349,053	7.46%	326	4.47%
\$50,000 - \$60,000	4,100,053	2.13%	76	1.04%
\$60,000 - \$70,000	2,525,774	1.31%	39	0.54%
\$70,000 - \$80,000	1,313,210	0.68%	18	0.25%
\$80,000 - \$90,000	756,747	0.39%	9	0.12%
\$90,000 - \$100,000	854,940	0.44%	9	0.12%
\$100,000 - \$200,000	3,065,993	1.59%	22	0.30%
\$200,000 - \$300,000	1,354,764	0.70%	6	0.08%
\$300,000 - \$400,000	-	0.00%	-	0.00%
\$400,000 - \$500,000	-	0.00%	-	0.00%
\$500,000+	-	0.00%	-	0.00%
Grand Total	192,291,715	100.00%	7,289	100.00%



FP Ignition 2017-B Trust
as at 30 November 2017

Contracts by Obligor Industry

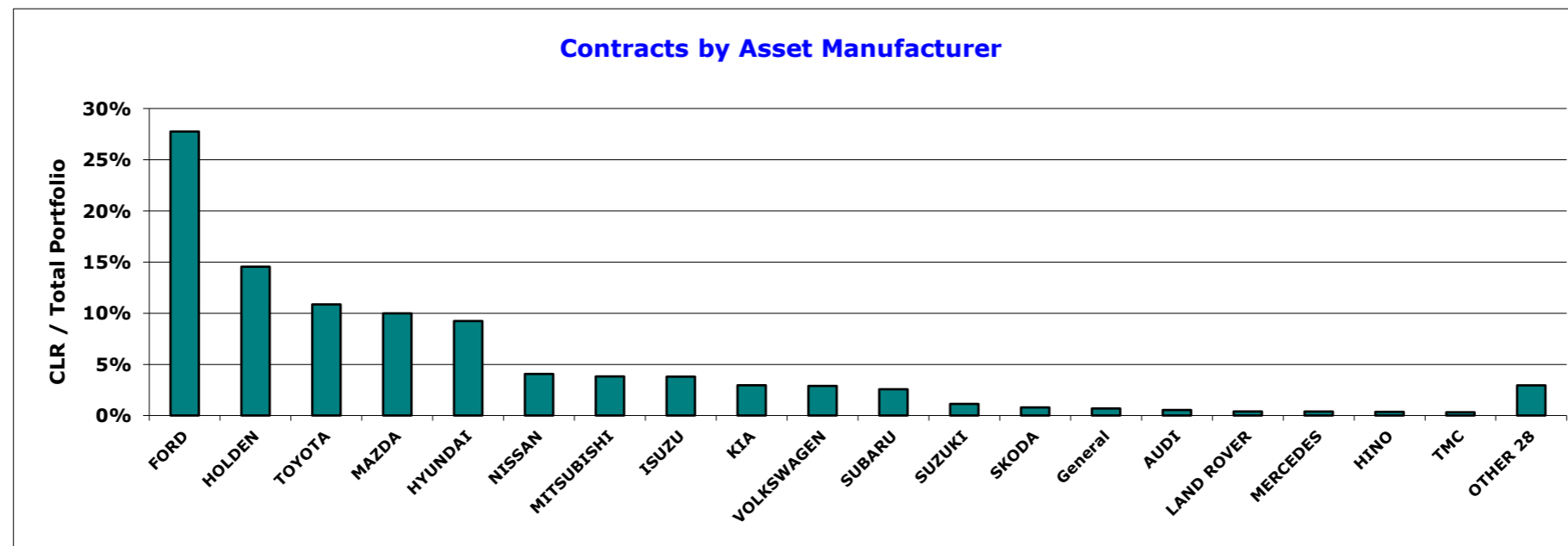
Industry Sector	Current Lease Receivable (CLR) (\$)	CLR / Total Portfolio (%)	Contracts No.	Contracts No. / Total Portfolio (%)
Manufacturing	43,567,201	22.66%	1,666	22.86%
Undefined	21,095,201	10.97%	682	9.36%
Wholesale Trade	19,712,920	10.25%	743	10.19%
Construction	17,619,806	9.16%	615	8.44%
Transport, Postal and Warehousing	14,816,929	7.71%	489	6.71%
Health Care and Social Assistance	11,598,101	6.03%	573	7.86%
Professional, Scientific and Technical Services	9,627,074	5.01%	360	4.94%
Retail Trade	9,137,354	4.75%	388	5.32%
Rental Hiring and Real Estate Services	7,574,925	3.94%	323	4.43%
Agriculture, Forestry and Fishing	7,165,053	3.73%	252	3.46%
Financial and Insurance Services	6,251,077	3.25%	254	3.48%
Other Services	5,631,768	2.93%	196	2.69%
Information Media and Telecommunications	3,833,927	1.99%	189	2.59%
Electricity, Gas, Water & Waste Services	3,767,034	1.96%	122	1.67%
Administrative and Support Services	3,361,208	1.75%	112	1.54%
Public Administration and Safety	2,694,671	1.40%	136	1.87%
Arts and Recreation Services	2,064,485	1.07%	91	1.25%
Education and Training	1,224,039	0.64%	49	0.67%
Accommodation and Food Services	909,483	0.47%	30	0.41%
Mining	639,459	0.33%	19	0.26%
Grand Total	192,291,715	100.00%	7,289	100.00%



FP Ignition 2017-B Trust
as at 30 November 2017

Contracts by Asset Manufacturer

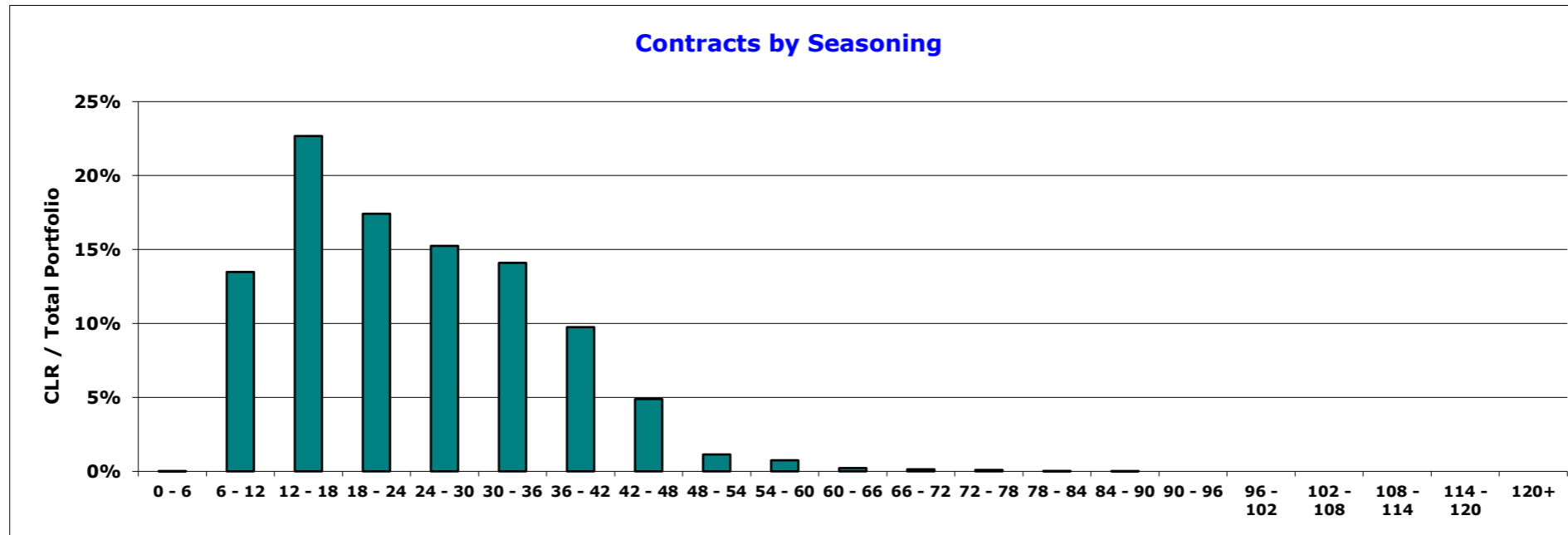
Manufacturer	Current Lease Receivable (CLR) (\$)	CLR / Total Portfolio (%)	Contracts No.	Contracts No. / Total Portfolio (%)
FORD	53,354,860	27.75%	1,785	24.49%
HOLDEN	27,957,358	14.54%	1,169	16.04%
TOYOTA	20,873,481	10.86%	826	11.33%
MAZDA	19,194,977	9.98%	812	11.14%
HYUNDAI	17,753,409	9.23%	808	11.09%
NISSAN	7,809,102	4.06%	319	4.38%
MITSUBISHI	7,344,307	3.82%	355	4.87%
ISUZU	7,302,777	3.80%	188	2.58%
KIA	5,684,212	2.96%	217	2.98%
VOLKSWAGEN	5,555,987	2.89%	189	2.59%
SUBARU	4,934,893	2.57%	194	2.66%
SUZUKI	2,177,524	1.13%	149	2.04%
SKODA	1,520,425	0.79%	70	0.96%
General	1,323,658	0.69%	13	0.18%
AUDI	1,036,539	0.54%	22	0.30%
LAND ROVER	757,352	0.39%	15	0.21%
MERCEDES	745,325	0.39%	20	0.27%
HINO	688,036	0.36%	6	0.08%
TMC	611,207	0.32%	6	0.08%
OTHER 28	5,666,285	2.95%	126	1.73%
Grand Total	192,291,715	100.00%	7,289	100.00%



**FP Ignition 2017-B Trust
as at 30 November 2017**

Contracts by Seasoning

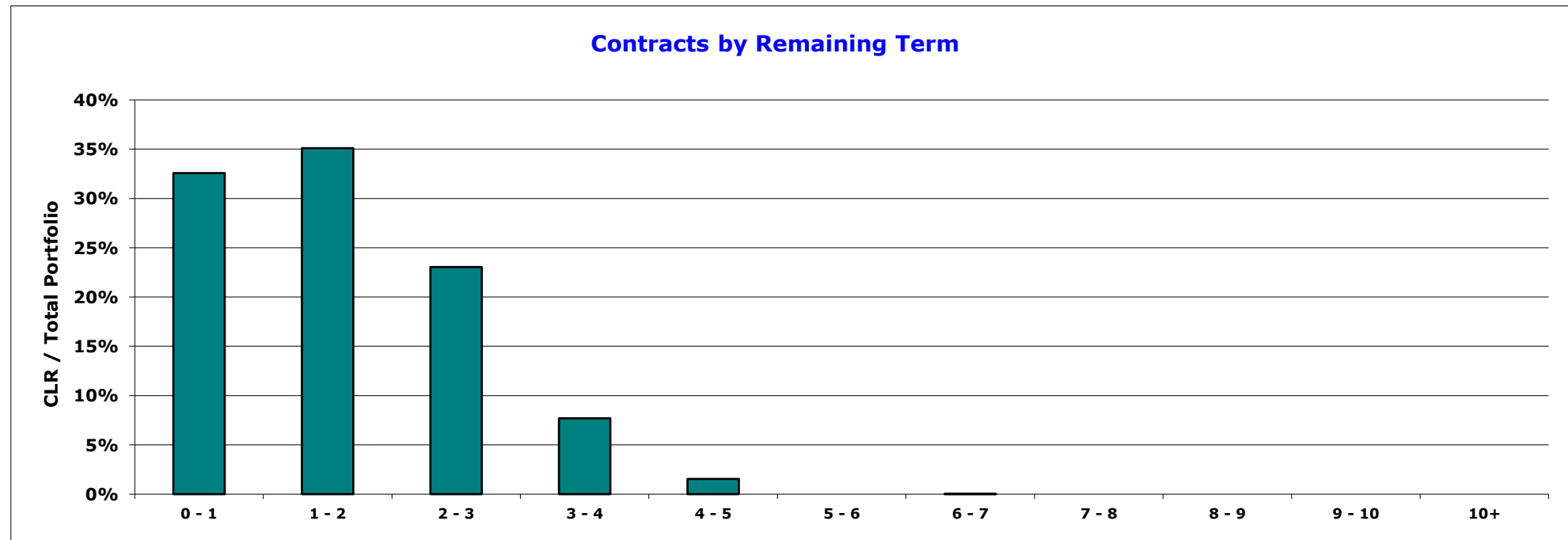
Seasoning Band Mths	Current Lease Receivable (CLR) (\$)	CLR / Total Portfolio (%)	Contracts No.	Contracts No. / Total Portfolio (%)
0 - 6	49,400	0.03%	2	0.03%
6 - 12	25,923,125	13.48%	815	11.18%
12 - 18	43,601,131	22.67%	1,376	18.88%
18 - 24	33,497,406	17.42%	1,149	15.76%
24 - 30	29,317,079	15.25%	1,152	15.80%
30 - 36	27,111,746	14.10%	1,195	16.39%
36 - 42	18,752,137	9.75%	905	12.42%
42 - 48	9,403,825	4.89%	463	6.35%
48 - 54	2,200,696	1.14%	105	1.44%
54 - 60	1,446,112	0.75%	72	0.99%
60 - 66	431,806	0.22%	24	0.33%
66 - 72	272,446	0.14%	16	0.22%
72 - 78	189,994	0.10%	10	0.14%
78 - 84	60,710	0.03%	3	0.04%
84 - 90	34,101	0.02%	2	0.03%
90 - 96	-	0.00%	-	0.00%
96 - 102	-	0.00%	-	0.00%
102 - 108	-	0.00%	-	0.00%
108 - 114	-	0.00%	-	0.00%
114 - 120	-	0.00%	-	0.00%
120+	-	0.00%	-	0.00%
Grand Total	192,291,715	100.00%	7,289	100.00%



**FP Ignition 2017-B Trust
as at 30 November 2017**

Contracts by Remaining Term

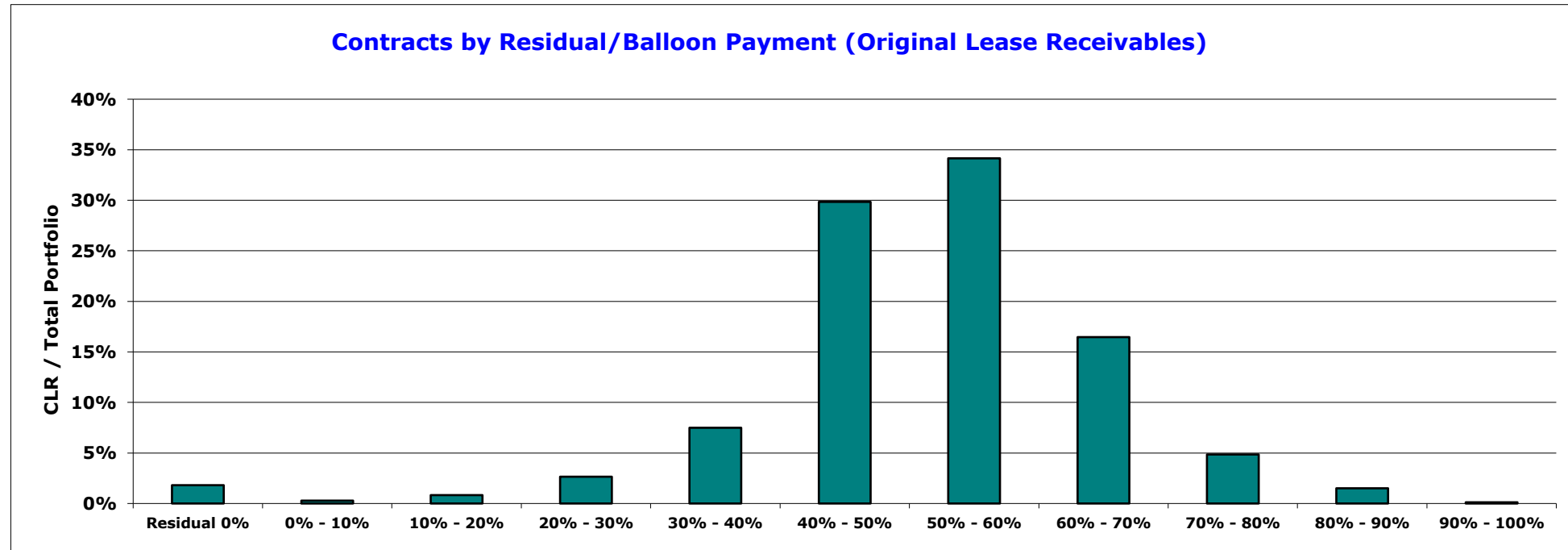
Remaining Term Band Yrs	Current Lease Receivable (CLR) (\$)	CLR / Total Portfolio (%)	Contracts No.	Contracts No. / Total Portfolio (%)
0 - 1	62,639,532	32.58%	3,053	41.89%
1 - 2	67,500,673	35.10%	2,442	33.50%
2 - 3	44,313,164	23.04%	1,398	19.18%
3 - 4	14,806,824	7.70%	338	4.64%
4 - 5	2,972,706	1.55%	57	0.78%
5 - 6	-	0.00%	-	0.00%
6 - 7	58,817	0.03%	1	0.01%
7 - 8	-	0.00%	-	0.00%
8 - 9	-	0.00%	-	0.00%
9 - 10	-	0.00%	-	0.00%
10+	-	0.00%	-	0.00%
Grand Total	192,291,715	100.00%	7,289	100.00%



**FP Ignition 2017-B Trust
as at 30 November 2017**

Contracts by Residual/Balloon Payment (Original Lease Receivables)

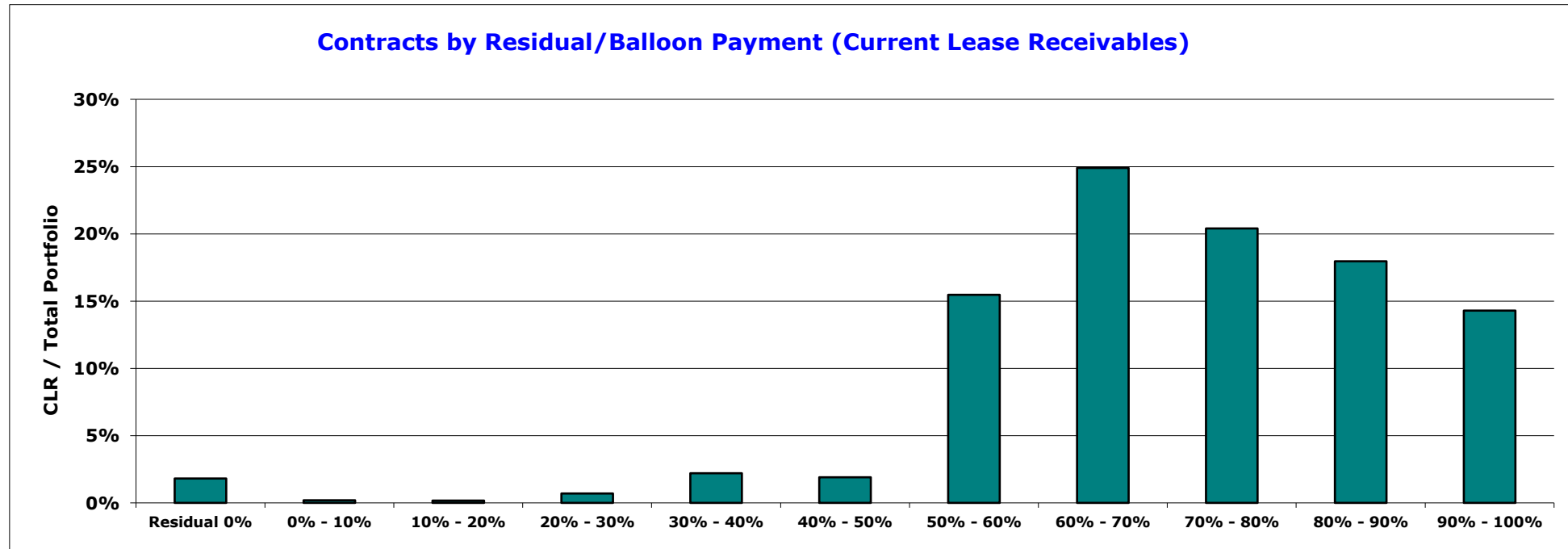
Residual Band (original)	Current Lease Receivable (CLR) (\$)	CLR / Total Portfolio (%)	Contracts No.	Contracts No. / Total Portfolio (%)
Residual 0%	3,484,666	1.81%	90	1.23%
0% - 10%	544,884	0.28%	17	0.23%
10% - 20%	1,594,086	0.83%	37	0.51%
20% - 30%	5,096,519	2.65%	124	1.70%
30% - 40%	14,408,088	7.49%	632	8.67%
40% - 50%	57,386,259	29.84%	2,311	31.71%
50% - 60%	65,670,621	34.15%	2,476	33.97%
60% - 70%	31,655,786	16.46%	1,111	15.24%
70% - 80%	9,326,109	4.85%	350	4.80%
80% - 90%	2,896,632	1.51%	133	1.82%
90% - 100%	228,064	0.12%	8	0.11%
Grand Total	192,291,715	100.00%	7,289	100.00%



**FP Ignition 2017-B Trust
as at 30 November 2017**

Contracts by Residual/Balloon Payment (Current Lease Receivables)

Residual Band (current)	Current Lease Receivable (CLR) (\$)	CLR / Total Portfolio (%)	Contracts No.	Contracts No. / Total Portfolio (%)
Residual 0%	3,484,666	1.81%	90	1.23%
0% - 10%	372,552	0.19%	4	0.05%
10% - 20%	327,643	0.17%	17	0.23%
20% - 30%	1,341,772	0.70%	24	0.33%
30% - 40%	4,235,915	2.20%	72	0.99%
40% - 50%	3,659,648	1.90%	104	1.43%
50% - 60%	29,743,266	15.47%	960	13.17%
60% - 70%	47,876,496	24.90%	1,657	22.73%
70% - 80%	39,228,180	20.40%	1,510	20.72%
80% - 90%	34,536,070	17.96%	1,520	20.85%
90% - 100%	27,485,507	14.29%	1,331	18.26%
Grand Total	192,291,715	100.00%	7,289	100.00%



FP Ignition 2017-B Trust
as at 30 November 2017

Contracts by New/Used

New/Used	Current Lease Receivable (CLR) (\$)	CLR / Total Portfolio (%)	Contracts No.	Contracts No. / Total Portfolio (%)
New	184,367,725	95.88%	6,969	95.61%
Used	7,923,991	4.12%	320	4.39%
Grand Total	192,291,715	100.00%	7,289	100.00%

