

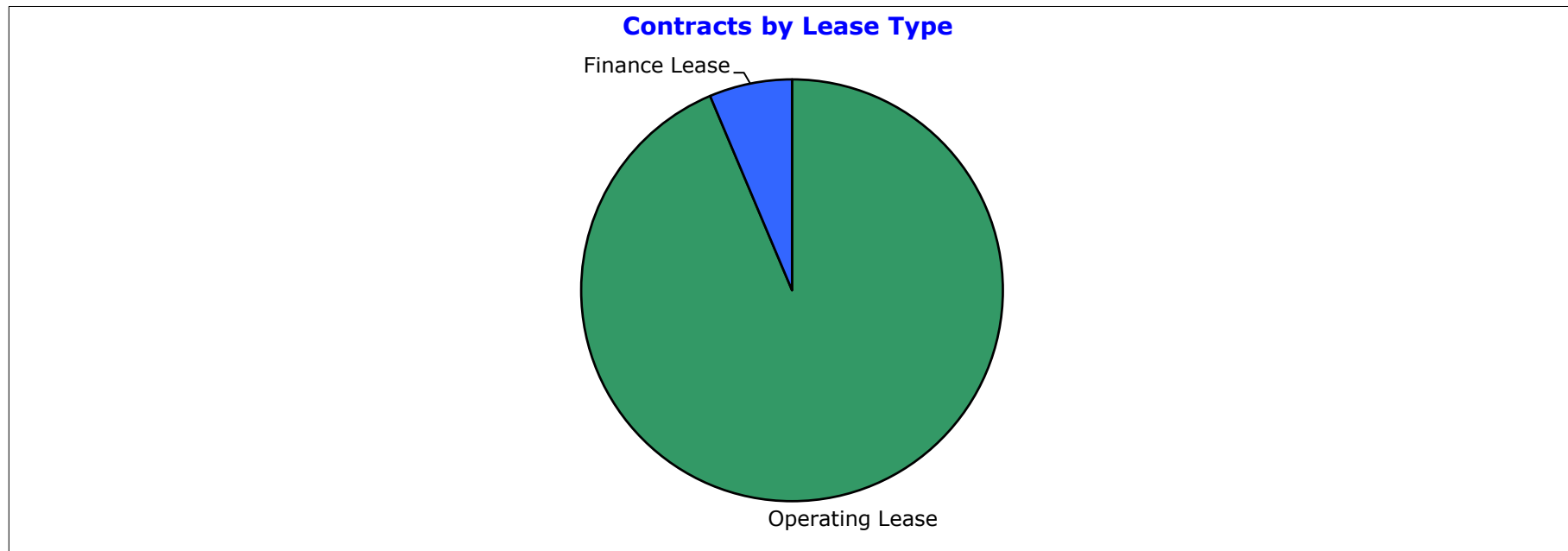
**FP Ignition 2017-B Trust
as at 31 October 2018**

Portfolio Summary	
Portfolio size	\$119,812,468
Number of contracts	4,971
Number of obligors	1,504
Minimum implied margin incl. hedge rate (p.a.)	11.30%
Average contract balance (current)	\$24,102
Maximum contract balance (current)	\$225,328
Average contract balance (original)	\$37,982
Maximum contract balance (original)	\$323,645
Weighted average total contract term (months)	44.16
Weighted average seasoning (months)	32.33
Weighted average remaining term (months)	13.15
Maximum remaining term (months)	65.03
Weighted average residual (current)	78.06%
Weighted average residual (original)	49.54%
Maximum residual (original)	94.39%

FP Ignition 2017-B Trust
as at 31 October 2018

Contracts by Lease Type

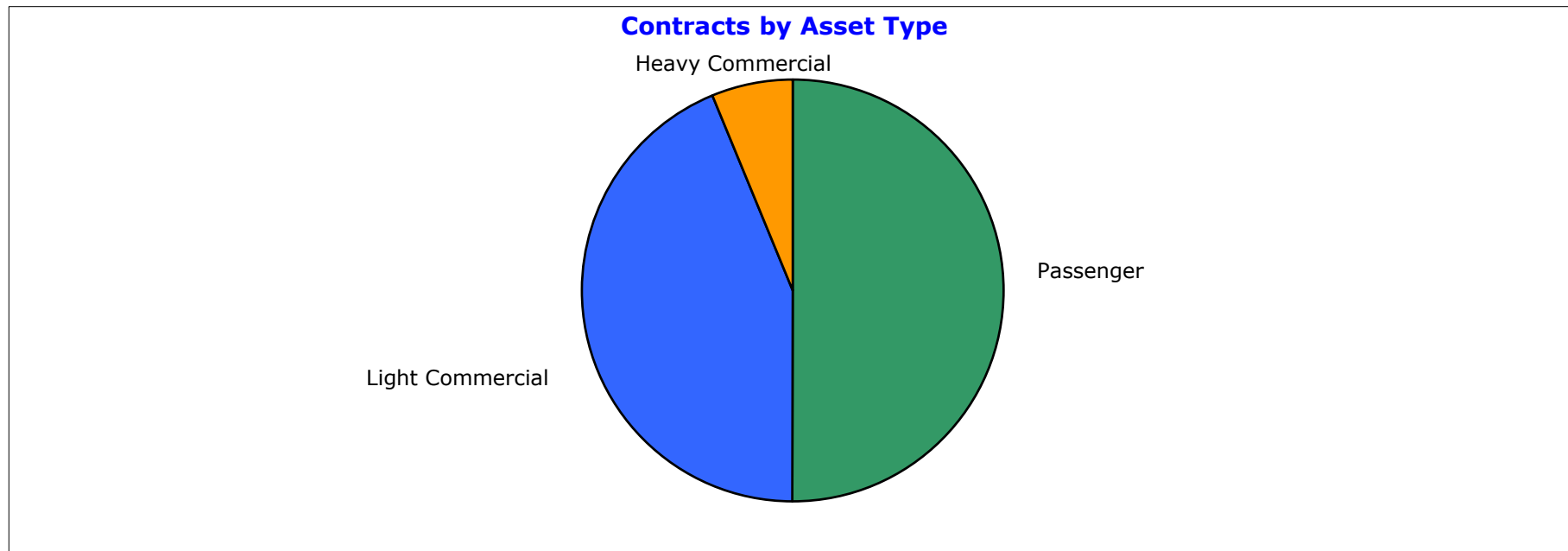
Lease Category	Current Lease Receivable (CLR) (\$)	CLR / Total Portfolio (%)	Contracts No.	Contracts No. / Total Portfolio (%)
Operating Lease	112,202,250	93.65%	4,761	95.78%
Finance Lease	7,610,218	6.35%	210	4.22%
Grand Total	119,812,468	100.00%	4,971	100.00%



**FP Ignition 2017-B Trust
as at 31 October 2018**

Contracts by Asset Type

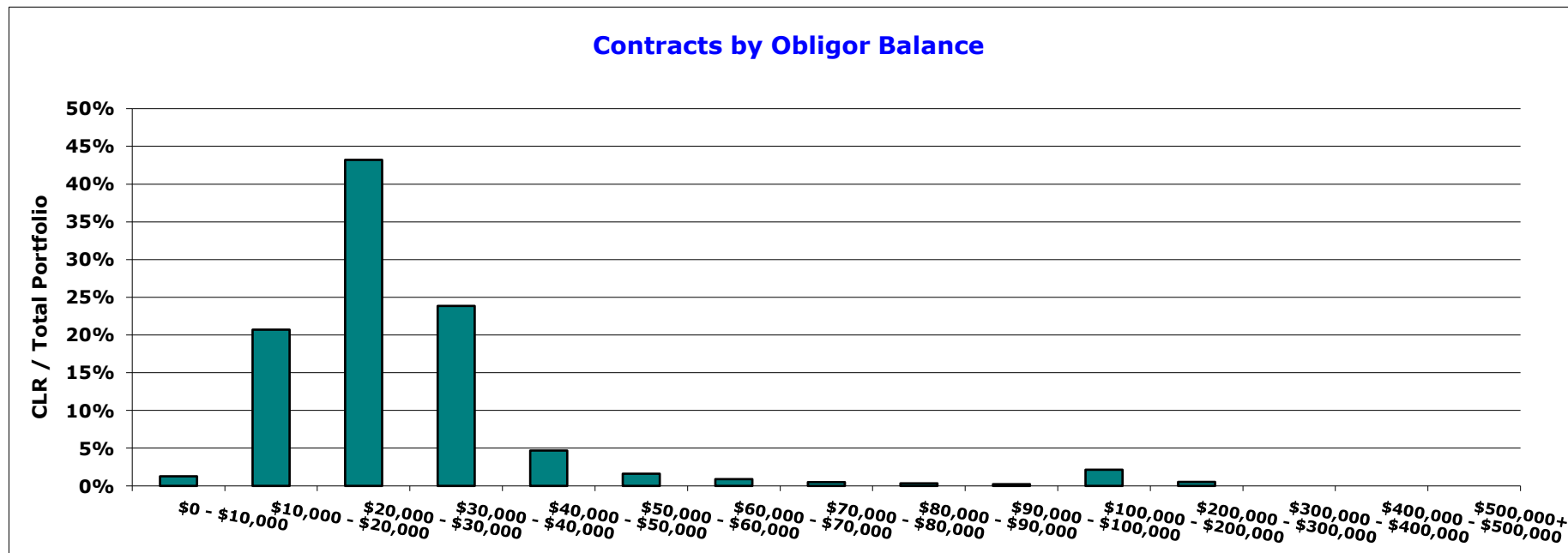
Asset Type	Current Lease Receivable (CLR) (\$)	CLR / Total Portfolio (%)	Contracts No.	Contracts No. / Total Portfolio (%)
Passenger	59,944,881	50.03%	2,913	58.60%
Light Commercial	52,410,512	43.74%	1,941	39.05%
Heavy Commercial	7,457,075	6.22%	117	2.35%
Grand Total	119,812,468	100.00%	4,971	100.00%



**FP Ignition 2017-B Trust
as at 31 October 2018**

Contracts by Obligor Balance

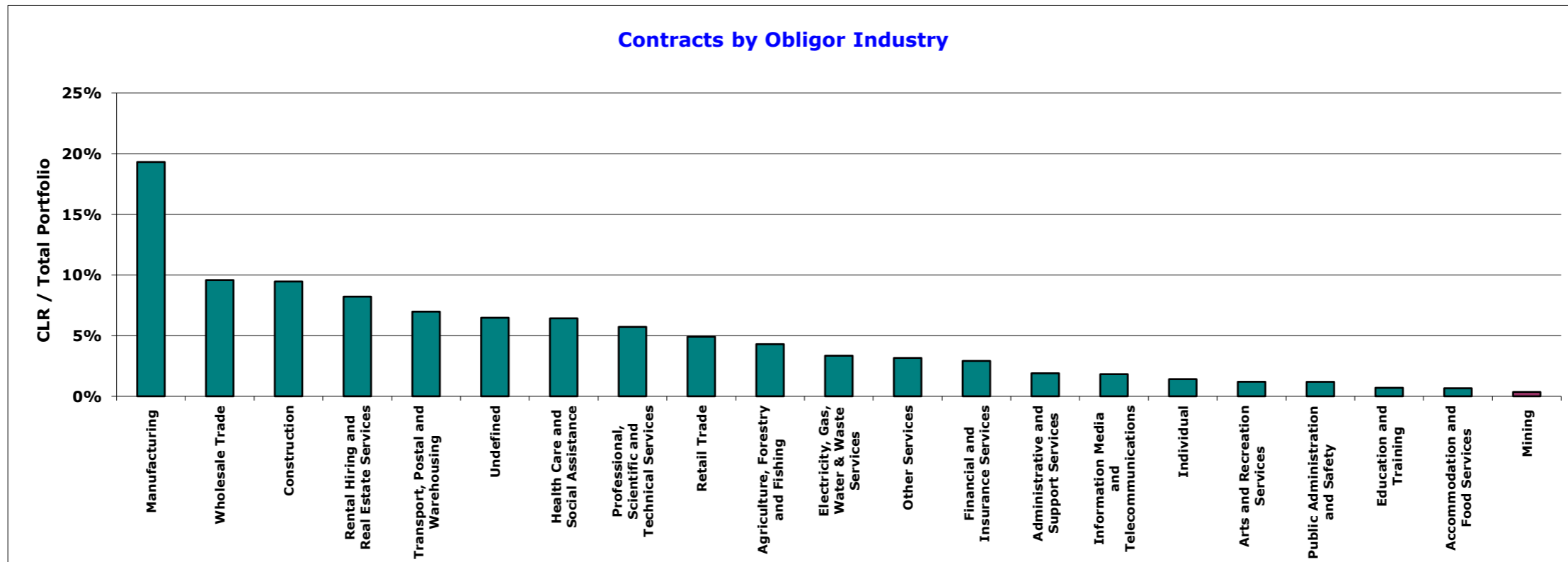
Obligor Balance	Current Lease Receivable (CLR) (\$)	CLR / Total Portfolio (%)	Contracts No.	Contracts No. / Total Portfolio (%)
\$0 - \$10,000	1,527,154	1.27%	191	3.84%
\$10,000 - \$20,000	24,808,692	20.71%	1,615	32.49%
\$20,000 - \$30,000	51,765,961	43.21%	2,085	41.94%
\$30,000 - \$40,000	28,579,377	23.85%	859	17.28%
\$40,000 - \$50,000	5,619,484	4.69%	129	2.60%
\$50,000 - \$60,000	1,936,958	1.62%	36	0.72%
\$60,000 - \$70,000	1,076,299	0.90%	17	0.34%
\$70,000 - \$80,000	602,589	0.50%	8	0.16%
\$80,000 - \$90,000	409,088	0.34%	5	0.10%
\$90,000 - \$100,000	276,664	0.23%	3	0.06%
\$100,000 - \$200,000	2,572,121	2.15%	20	0.40%
\$200,000 - \$300,000	638,082	0.53%	3	0.06%
\$300,000 - \$400,000	-	0.00%	-	0.00%
\$400,000 - \$500,000	-	0.00%	-	0.00%
\$500,000+	-	0.00%	-	0.00%
Grand Total	119,812,468	100.00%	4,971	100.00%



**FP Ignition 2017-B Trust
as at 31 October 2018**

Contracts by Obligor Industry

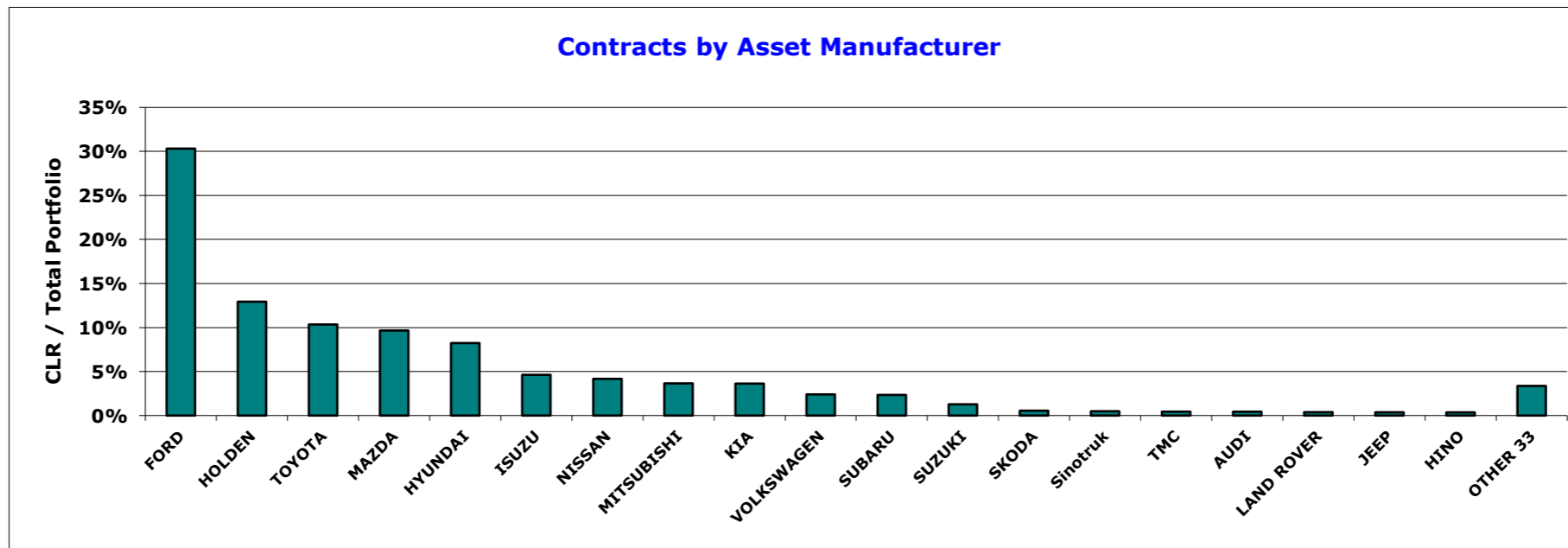
Industry Sector	Current Lease Receivable (CLR) (\$)	CLR / Total Portfolio (%)	Contracts No.	Contracts No. / Total Portfolio (%)
Manufacturing	23,128,945	19.30%	963	19.37%
Wholesale Trade	11,474,232	9.58%	489	9.84%
Construction	11,332,743	9.46%	429	8.63%
Rental Hiring and Real Estate Services	9,838,945	8.21%	378	7.60%
Transport, Postal and Warehousing	8,359,073	6.98%	307	6.18%
Undefined	7,755,170	6.47%	306	6.16%
Health Care and Social Assistance	7,694,142	6.42%	438	8.81%
Professional, Scientific and Technical Services	6,855,565	5.72%	279	5.61%
Retail Trade	5,886,265	4.91%	291	5.85%
Agriculture, Forestry and Fishing	5,146,754	4.30%	179	3.60%
Electricity, Gas, Water & Waste Services	4,007,503	3.34%	153	3.08%
Other Services	3,784,536	3.16%	141	2.84%
Financial and Insurance Services	3,493,047	2.92%	140	2.82%
Administrative and Support Services	2,271,784	1.90%	87	1.75%
Information Media and Telecommunications	2,182,387	1.82%	116	2.33%
Individual	1,692,600	1.41%	61	1.23%
Arts and Recreation Services	1,433,432	1.20%	67	1.35%
Public Administration and Safety	1,426,040	1.19%	70	1.41%
Education and Training	838,936	0.70%	34	0.68%
Accommodation and Food Services	791,283	0.66%	30	0.60%
Mining	419,085	0.35%	13	0.26%
Grand Total	119,812,468	100.00%	4,971	100.00%



FP Ignition 2017-B Trust
as at 31 October 2018

Contracts by Asset Manufacturer

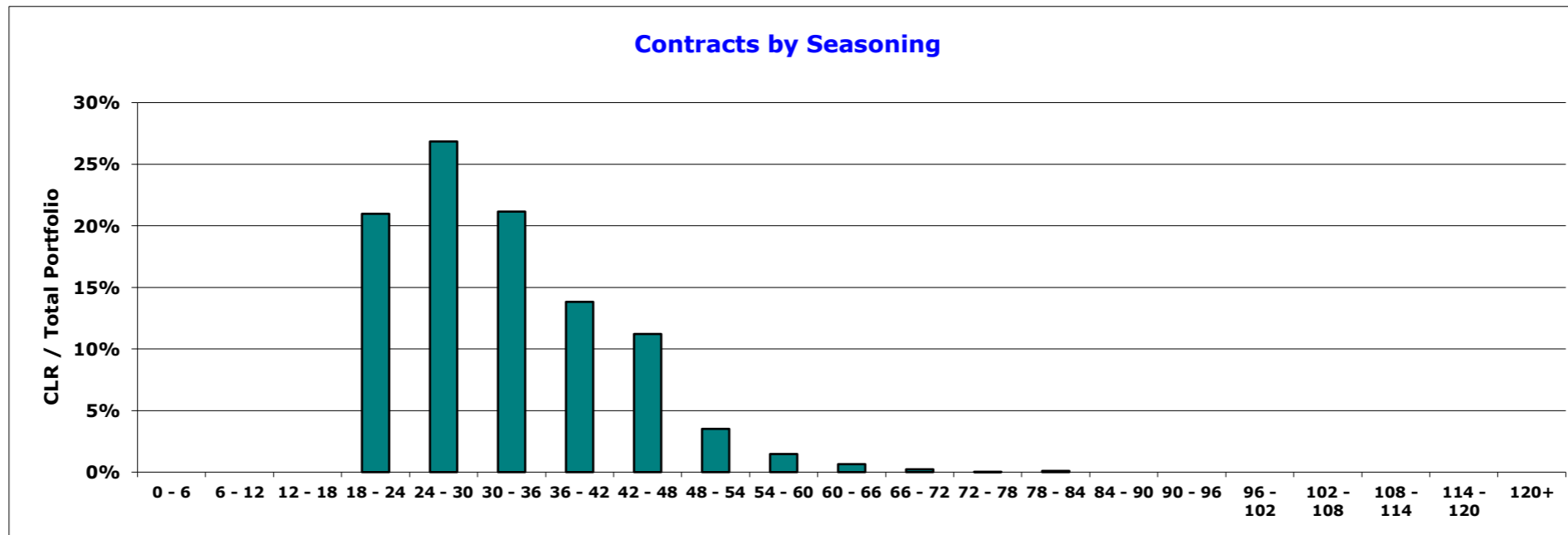
Manufacturer	Current Lease Receivable (CLR) (\$)	CLR / Total Portfolio (%)	Contracts No.	Contracts No. / Total Portfolio (%)
FORD	36,326,476	30.32%	1,323	26.61%
HOLDEN	15,493,734	12.93%	712	14.32%
TOYOTA	12,394,269	10.34%	536	10.78%
MAZDA	11,571,472	9.66%	526	10.58%
HYUNDAI	9,863,692	8.23%	527	10.60%
ISUZU	5,542,224	4.63%	162	3.26%
NISSAN	4,995,950	4.17%	228	4.59%
MITSUBISHI	4,379,283	3.66%	241	4.85%
KIA	4,347,858	3.63%	190	3.82%
VOLKSWAGEN	2,879,930	2.40%	103	2.07%
SUBARU	2,806,317	2.34%	126	2.53%
SUZUKI	1,527,759	1.28%	124	2.49%
SKODA	663,370	0.55%	35	0.70%
Sinotruk	587,541	0.49%	4	0.08%
TMC	530,987	0.44%	6	0.12%
AUDI	526,805	0.44%	13	0.26%
LAND ROVER	461,495	0.39%	10	0.20%
JEEP	446,775	0.37%	10	0.20%
HINO	435,518	0.36%	5	0.10%
OTHER 33	4,031,014	3.36%	90	1.81%
Grand Total	119,812,468	100.00%	4,971	100.00%



**FP Ignition 2017-B Trust
as at 31 October 2018**

Contracts by Seasoning

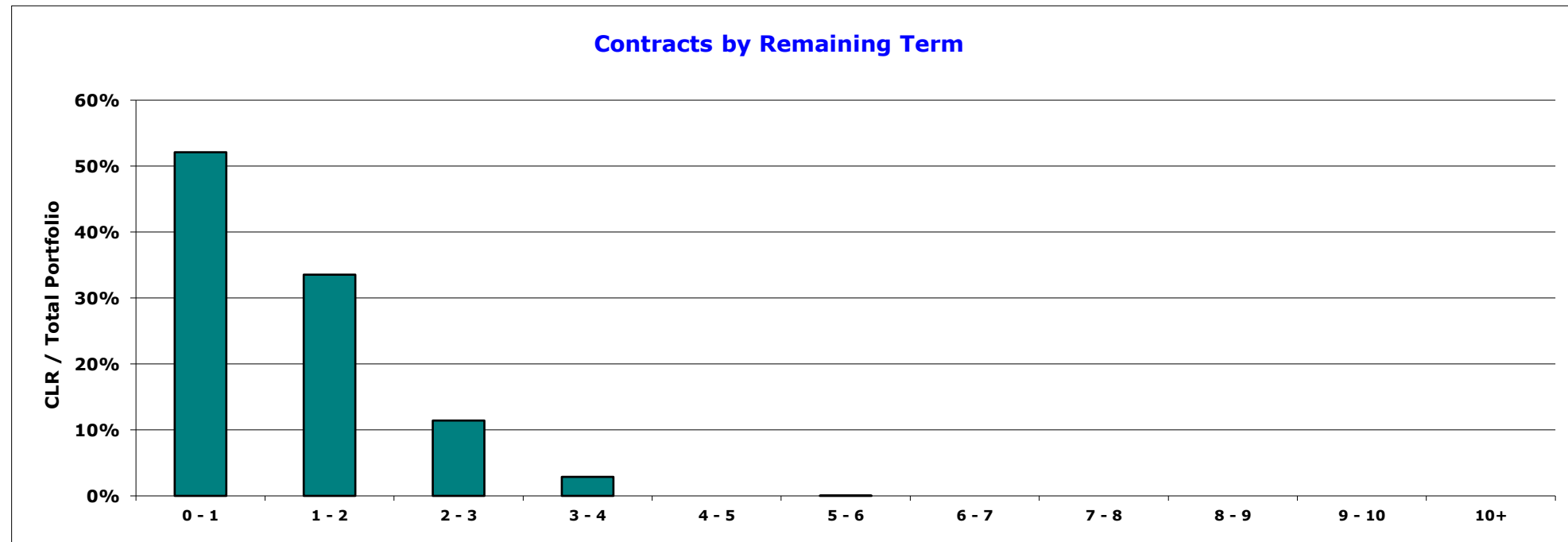
Seasoning Band Mths	Current Lease Receivable (CLR) (\$)	CLR / Total Portfolio (%)	Contracts No.	Contracts No. / Total Portfolio (%)
0 - 6	-	0.00%	-	0.00%
6 - 12	-	0.00%	-	0.00%
12 - 18	-	0.00%	-	0.00%
18 - 24	25,129,795	20.97%	862	17.34%
24 - 30	32,163,533	26.84%	1,168	23.50%
30 - 36	25,344,117	21.15%	1,071	21.54%
36 - 42	16,564,750	13.83%	771	15.51%
42 - 48	13,437,750	11.22%	708	14.24%
48 - 54	4,208,714	3.51%	226	4.55%
54 - 60	1,762,144	1.47%	97	1.95%
60 - 66	775,540	0.65%	40	0.80%
66 - 72	275,369	0.23%	17	0.34%
72 - 78	30,580	0.03%	2	0.04%
78 - 84	120,176	0.10%	9	0.18%
84 - 90	-	0.00%	-	0.00%
90 - 96	-	0.00%	-	0.00%
96 - 102	-	0.00%	-	0.00%
102 - 108	-	0.00%	-	0.00%
108 - 114	-	0.00%	-	0.00%
114 - 120	-	0.00%	-	0.00%
120+	-	0.00%	-	0.00%
Grand Total	119,812,468	100.00%	4,971	100.00%



**FP Ignition 2017-B Trust
as at 31 October 2018**

Contracts by Remaining Term

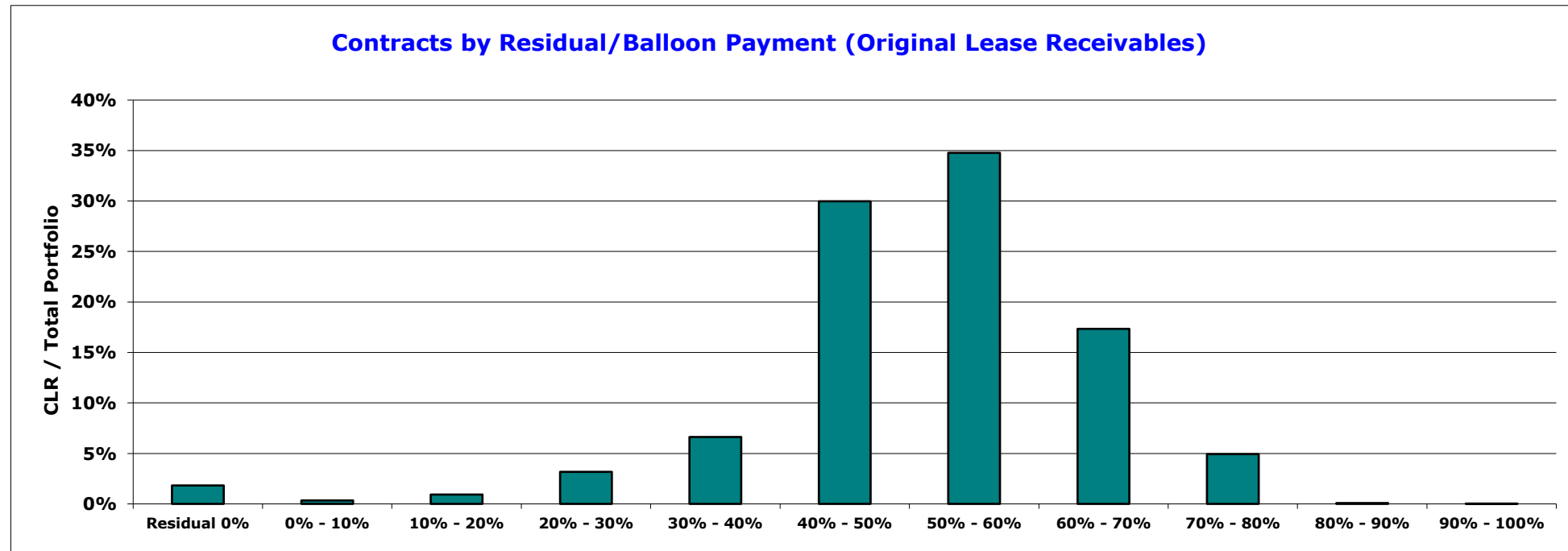
Remaining Term Band Yrs	Current Lease Receivable (CLR) (\$)	CLR / Total Portfolio (%)	Contracts No.	Contracts No. / Total Portfolio (%)
0 - 1	62,425,926	52.10%	3,017	60.69%
1 - 2	40,186,138	33.54%	1,495	30.07%
2 - 3	13,689,840	11.43%	386	7.77%
3 - 4	3,457,167	2.89%	72	1.45%
4 - 5	-	0.00%	-	0.00%
5 - 6	53,396	0.04%	1	0.02%
6 - 7	-	0.00%	-	0.00%
7 - 8	-	0.00%	-	0.00%
8 - 9	-	0.00%	-	0.00%
9 - 10	-	0.00%	-	0.00%
10+	-	0.00%	-	0.00%
Grand Total	119,812,468	100.00%	4,971	100.00%



**FP Ignition 2017-B Trust
as at 31 October 2018**

Contracts by Residual/Balloon Payment (Original Lease Receivables)

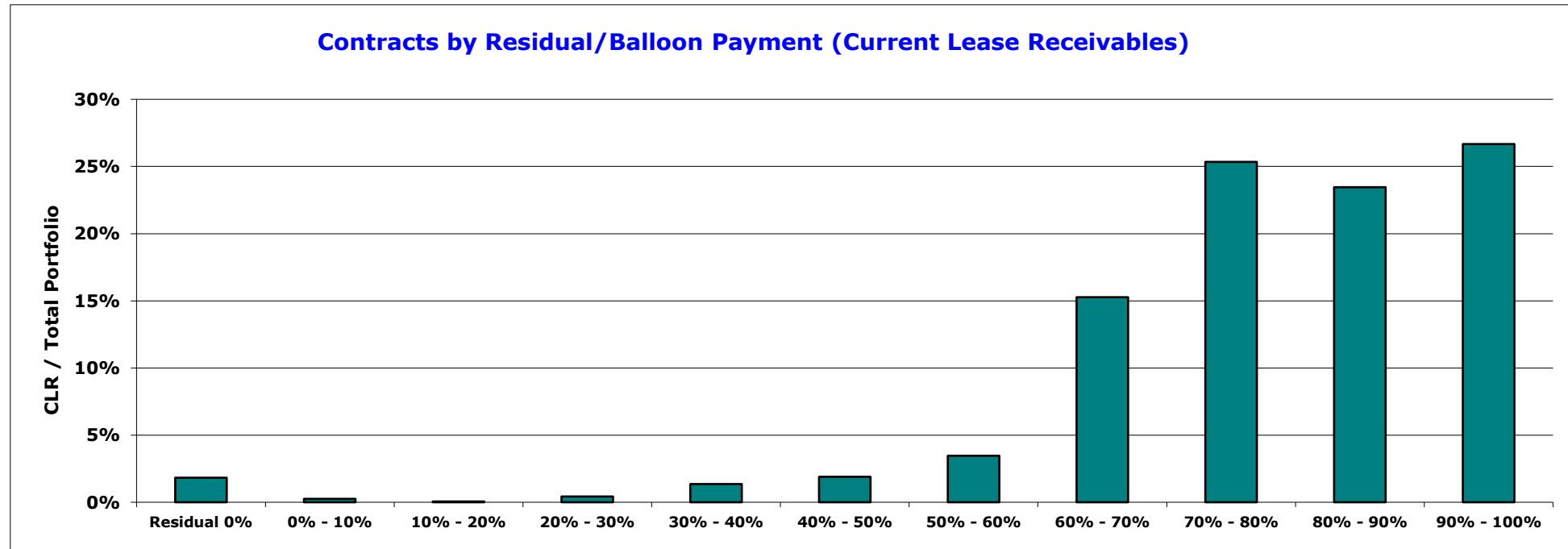
Residual Band (original)	Current Lease Receivable (CLR) (\$)	CLR / Total Portfolio (%)	Contracts No.	Contracts No. / Total Portfolio (%)
Residual 0%	2,186,534	1.82%	76	1.53%
0% - 10%	409,488	0.34%	17	0.34%
10% - 20%	1,108,435	0.93%	32	0.64%
20% - 30%	3,802,652	3.17%	110	2.21%
30% - 40%	7,937,047	6.62%	425	8.55%
40% - 50%	35,907,878	29.97%	1,660	33.39%
50% - 60%	41,652,046	34.76%	1,675	33.70%
60% - 70%	20,768,187	17.33%	752	15.13%
70% - 80%	5,905,276	4.93%	219	4.41%
80% - 90%	97,583	0.08%	4	0.08%
90% - 100%	37,342	0.03%	1	0.02%
Grand Total	119,812,468	100.00%	4,971	100.00%



**FP Ignition 2017-B Trust
as at 31 October 2018**

Contracts by Residual/Balloon Payment (Current Lease Receivables)

Residual Band (current)	Current Lease Receivable (CLR) (\$)	CLR / Total Portfolio (%)	Contracts No.	Contracts No. / Total Portfolio (%)
Residual 0%	2,186,534	1.82%	76	1.53%
0% - 10%	302,744	0.25%	4	0.08%
10% - 20%	68,220	0.06%	6	0.12%
20% - 30%	511,835	0.43%	14	0.28%
30% - 40%	1,622,766	1.35%	28	0.56%
40% - 50%	2,270,372	1.89%	50	1.01%
50% - 60%	4,146,954	3.46%	129	2.60%
60% - 70%	18,289,233	15.26%	678	13.64%
70% - 80%	30,359,691	25.34%	1,171	23.56%
80% - 90%	28,103,189	23.46%	1,169	23.52%
90% - 100%	31,950,930	26.67%	1,646	33.11%
Grand Total	119,812,468	100.00%	4,971	100.00%



FP Ignition 2017-B Trust
as at 31 October 2018

Contracts by New/Used

New/Used	Current Lease Receivable (CLR) (\$)	CLR / Total Portfolio (%)	Contracts No.	Contracts No. / Total Portfolio (%)
New	115,448,356	96.36%	4,768	95.92%
Used	4,364,112	3.64%	203	4.08%
Grand Total	119,812,468	100.00%	4,971	100.00%

