

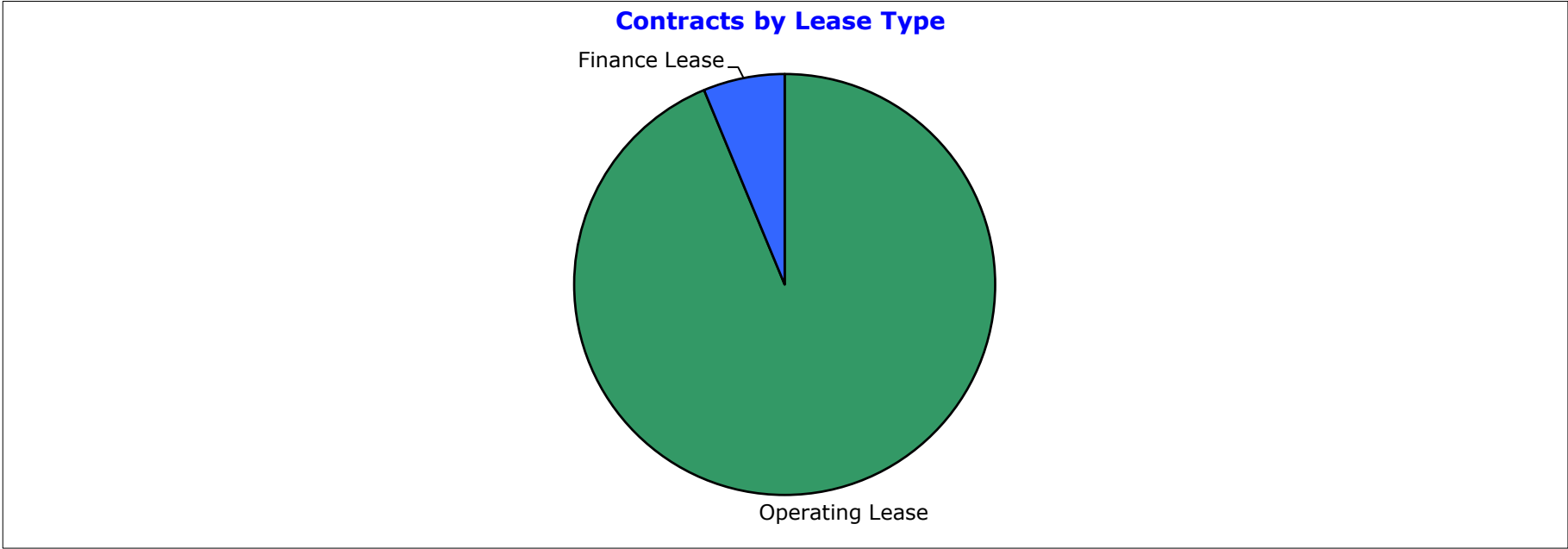
**FP Ignition 2017-B Trust
as at 30 September 2018**

Portfolio Summary	
Portfolio size	\$125,427,586
Number of contracts	5,176
Number of obligors	1,543
Minimum implied margin incl. hedge rate (p.a.)	11.23%
Average contract balance (current)	\$24,233
Maximum contract balance (current)	\$229,055
Average contract balance (original)	\$37,903
Maximum contract balance (original)	\$323,645
Weighted average total contract term (months)	44.08
Weighted average seasoning (months)	31.65
Weighted average remaining term (months)	13.66
Maximum remaining term (months)	66.05
Weighted average residual (current)	77.53%
Weighted average residual (original)	49.57%
Maximum residual (original)	94.70%

FP Ignition 2017-B Trust
as at 30 September 2018

Contracts by Lease Type

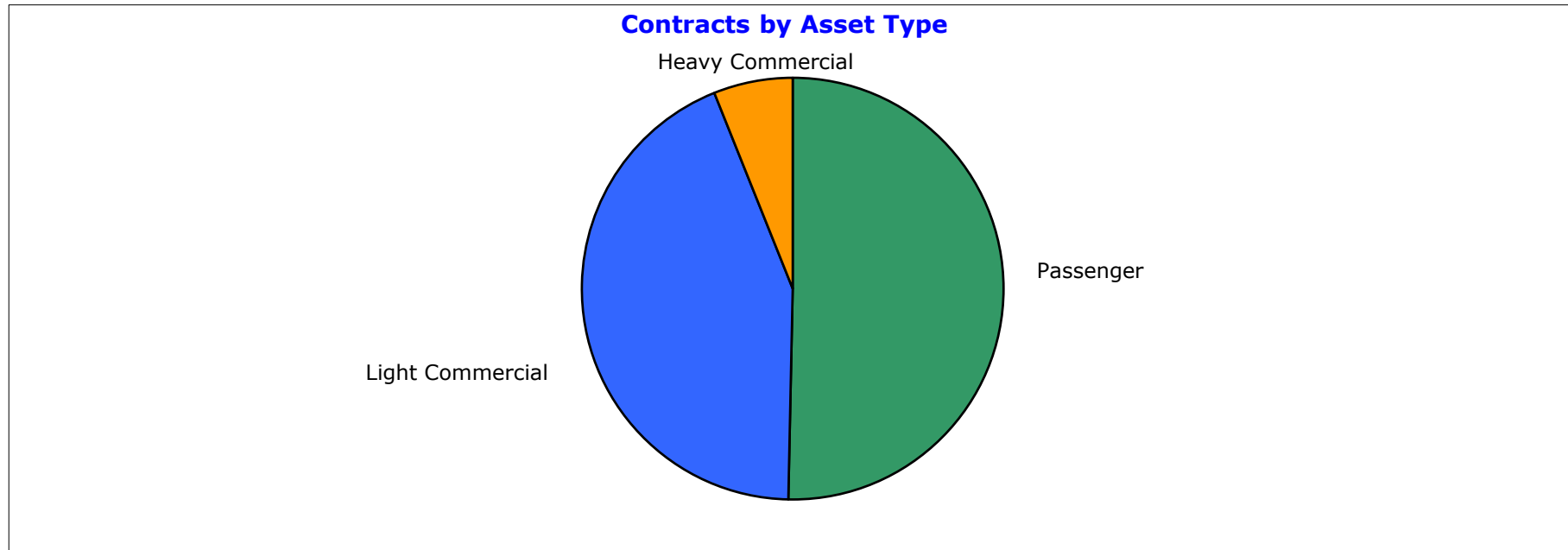
Lease Category	Current Lease Receivable (CLR) (\$)	CLR / Total Portfolio (%)	Contracts No.	Contracts No. / Total Portfolio (%)
Operating Lease	117,584,943	93.75%	4,955	95.73%
Finance Lease	7,842,642	6.25%	221	4.27%
Grand Total	125,427,586	100.00%	5,176	100.00%



**FP Ignition 2017-B Trust
as at 30 September 2018**

Contracts by Asset Type

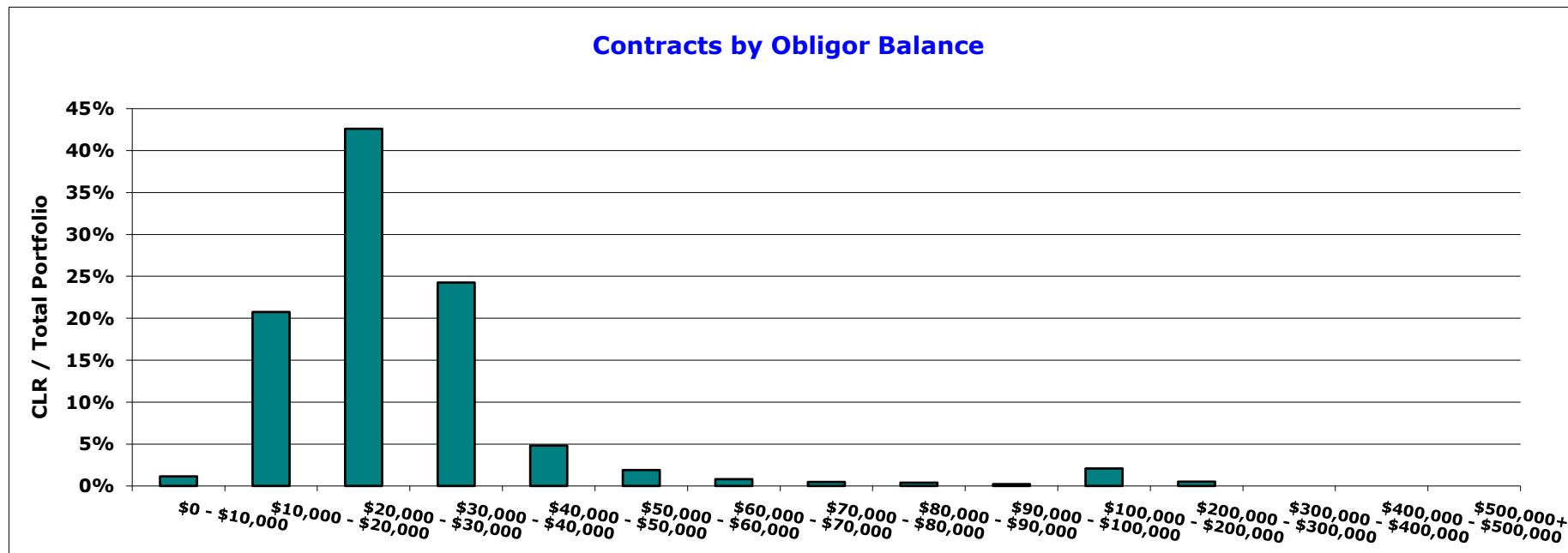
Asset Type	Current Lease Receivable (CLR) (\$)	CLR / Total Portfolio (%)	Contracts No.	Contracts No. / Total Portfolio (%)
Passenger	63,130,669	50.33%	3,043	58.79%
Light Commercial	54,691,124	43.60%	2,015	38.93%
Heavy Commercial	7,605,792	6.06%	118	2.28%
Grand Total	125,427,586	100.00%	5,176	100.00%



**FP Ignition 2017-B Trust
as at 30 September 2018**

Contracts by Obligor Balance

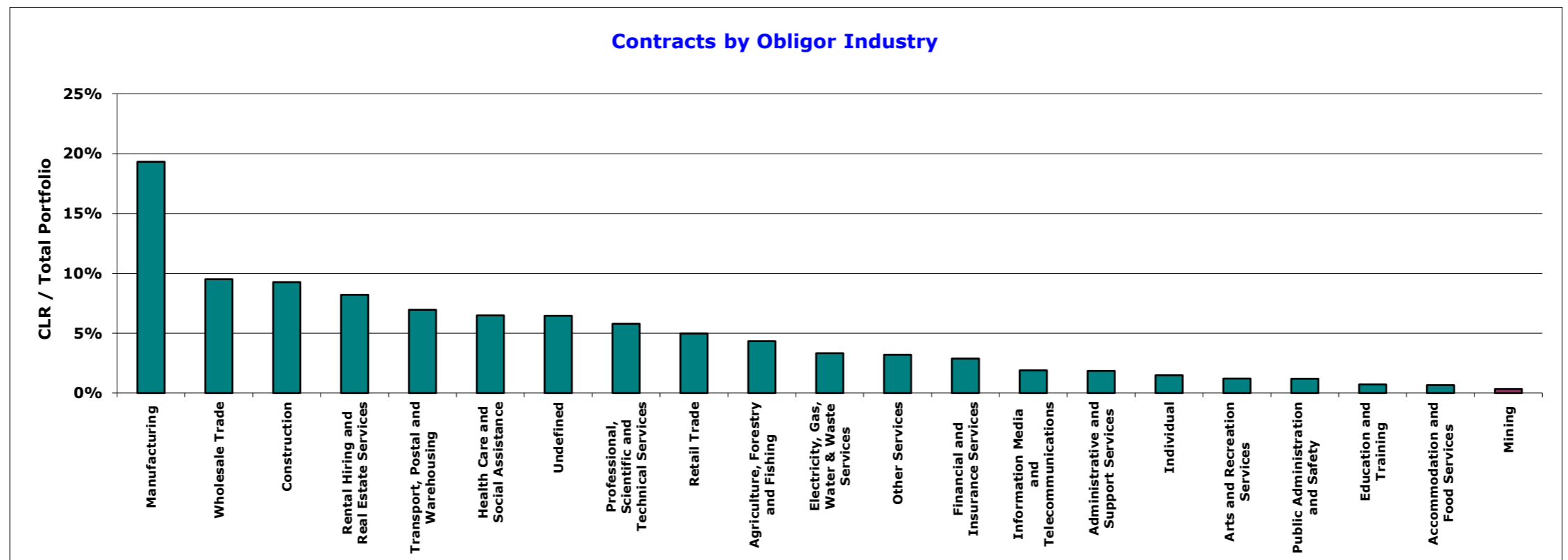
Obligor Balance	Current Lease Receivable (CLR) (\$)	CLR / Total Portfolio (%)	Contracts No.	Contracts No. / Total Portfolio (%)
\$0 - \$10,000	1,435,165	1.14%	186	3.59%
\$10,000 - \$20,000	26,027,909	20.75%	1,694	32.73%
\$20,000 - \$30,000	53,436,930	42.60%	2,145	41.44%
\$30,000 - \$40,000	30,431,338	24.26%	912	17.62%
\$40,000 - \$50,000	6,043,154	4.82%	139	2.69%
\$50,000 - \$60,000	2,383,039	1.90%	44	0.85%
\$60,000 - \$70,000	1,021,770	0.81%	16	0.31%
\$70,000 - \$80,000	603,780	0.48%	8	0.15%
\$80,000 - \$90,000	496,816	0.40%	6	0.12%
\$90,000 - \$100,000	281,566	0.22%	3	0.06%
\$100,000 - \$200,000	2,619,240	2.09%	20	0.39%
\$200,000 - \$300,000	646,878	0.52%	3	0.06%
\$300,000 - \$400,000	-	0.00%	-	0.00%
\$400,000 - \$500,000	-	0.00%	-	0.00%
\$500,000+	-	0.00%	-	0.00%
Grand Total	125,427,586	100.00%	5,176	100.00%



**FP Ignition 2017-B Trust
as at 30 September 2018**

Contracts by Obligor Industry

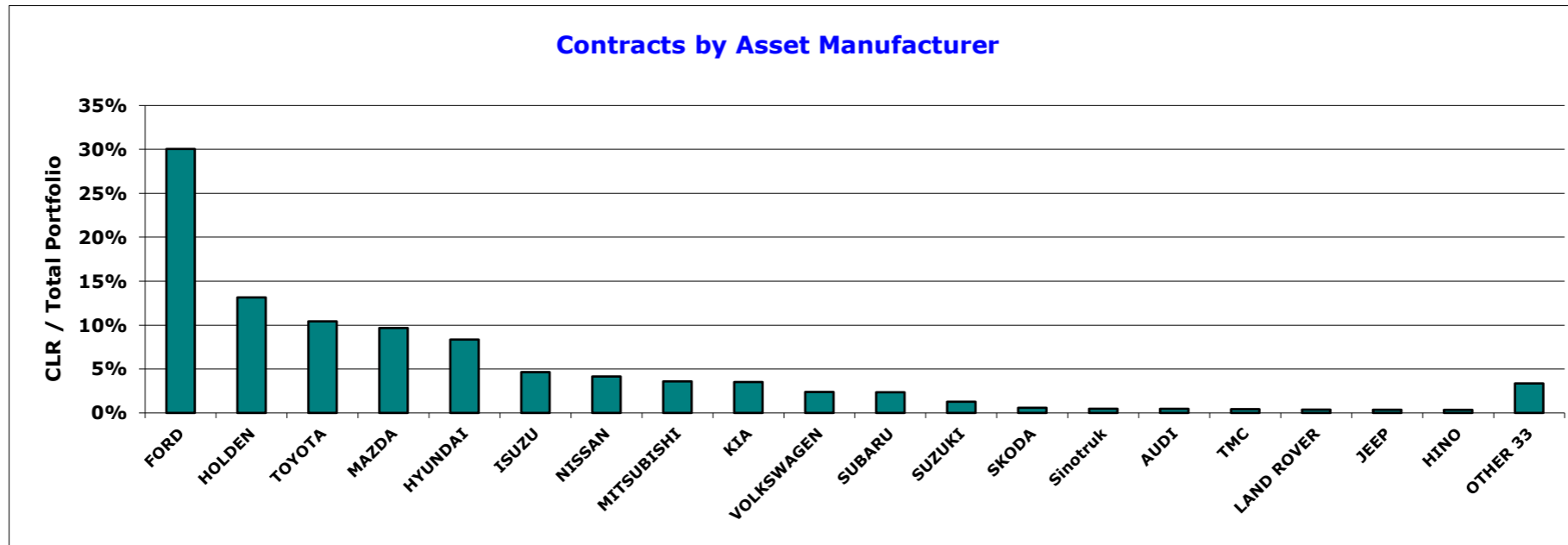
Industry Sector	Current Lease Receivable (CLR) (\$)	CLR / Total Portfolio (%)	Contracts No.	Contracts No. / Total Portfolio (%)
Manufacturing	24,229,357	19.32%	1,004	19.40%
Wholesale Trade	11,929,558	9.51%	503	9.72%
Construction	11,614,307	9.26%	435	8.40%
Rental Hiring and Real Estate Services	10,287,437	8.20%	393	7.59%
Transport, Postal and Warehousing	8,720,580	6.95%	316	6.11%
Health Care and Social Assistance	8,130,848	6.48%	454	8.77%
Undefined	8,093,579	6.45%	316	6.11%
Professional, Scientific and Technical Services	7,257,926	5.79%	294	5.68%
Retail Trade	6,226,476	4.96%	308	5.95%
Agriculture, Forestry and Fishing	5,433,167	4.33%	190	3.67%
Electricity, Gas, Water & Waste Services	4,170,322	3.32%	159	3.07%
Other Services	4,003,887	3.19%	151	2.92%
Financial and Insurance Services	3,610,769	2.88%	143	2.76%
Information Media and Telecommunications	2,375,011	1.89%	127	2.45%
Administrative and Support Services	2,315,039	1.85%	88	1.70%
Individual	1,857,715	1.48%	67	1.29%
Arts and Recreation Services	1,519,025	1.21%	72	1.39%
Public Administration and Safety	1,499,578	1.20%	75	1.45%
Education and Training	895,828	0.71%	36	0.70%
Accommodation and Food Services	831,719	0.66%	31	0.60%
Mining	425,457	0.34%	14	0.27%
Grand Total	125,427,586	100.00%	5,176	100.00%



FP Ignition 2017-B Trust
as at 30 September 2018

Contracts by Asset Manufacturer

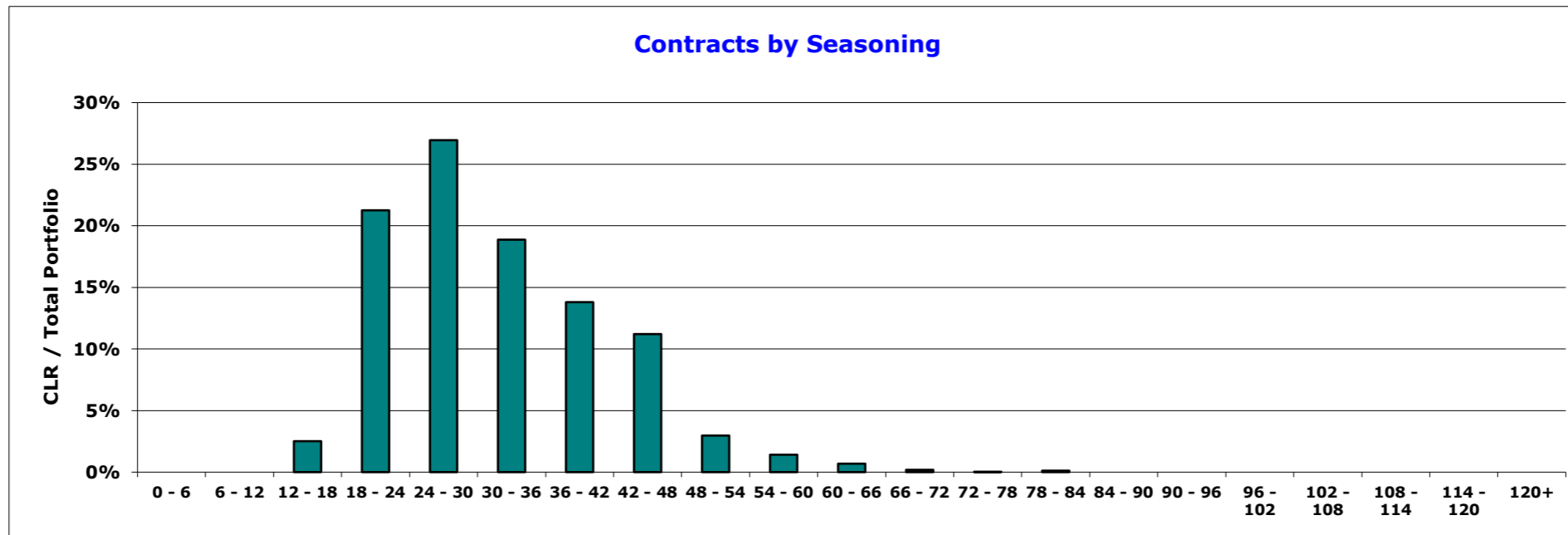
Manufacturer	Current Lease Receivable (CLR) (\$)	CLR / Total Portfolio (%)	Contracts No.	Contracts No. / Total Portfolio (%)
FORD	37,691,591	30.05%	1,366	26.39%
HOLDEN	16,492,474	13.15%	760	14.68%
TOYOTA	13,077,083	10.43%	557	10.76%
MAZDA	12,133,656	9.67%	549	10.61%
HYUNDAI	10,478,922	8.35%	552	10.66%
ISUZU	5,828,516	4.65%	171	3.30%
NISSAN	5,204,931	4.15%	236	4.56%
MITSUBISHI	4,506,380	3.59%	244	4.71%
KIA	4,413,867	3.52%	190	3.67%
VOLKSWAGEN	2,993,623	2.39%	106	2.05%
SUBARU	2,952,309	2.35%	130	2.51%
SUZUKI	1,603,877	1.28%	128	2.47%
SKODA	738,331	0.59%	39	0.75%
Sinotruk	598,874	0.48%	4	0.08%
AUDI	591,205	0.47%	15	0.29%
TMC	538,478	0.43%	6	0.12%
LAND ROVER	473,504	0.38%	11	0.21%
JEEP	455,649	0.36%	10	0.19%
HINO	442,524	0.35%	5	0.10%
OTHER 33	4,211,789	3.36%	97	1.87%
Grand Total	125,427,586	100.00%	5,176	100.00%



**FP Ignition 2017-B Trust
as at 30 September 2018**

Contracts by Seasoning

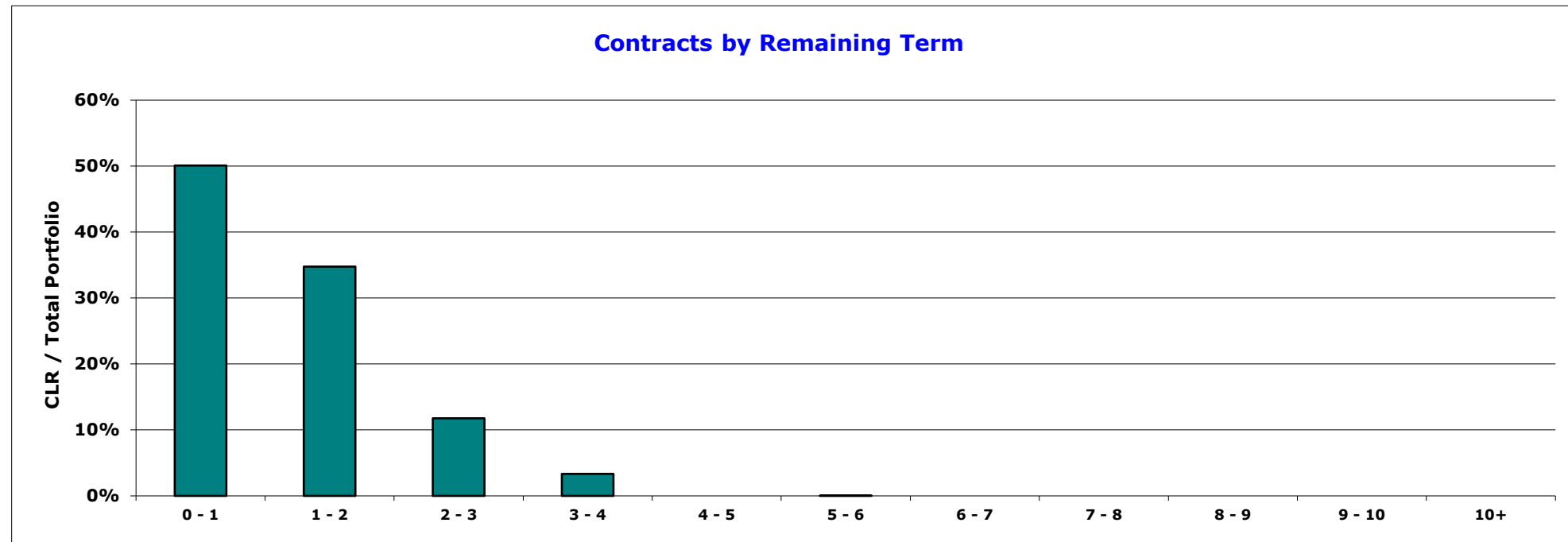
Seasoning Band Mths	Current Lease Receivable (CLR) (\$)	CLR / Total Portfolio (%)	Contracts No.	Contracts No. / Total Portfolio (%)
0 - 6	-	0.00%	-	0.00%
6 - 12	-	0.00%	-	0.00%
12 - 18	3,150,826	2.51%	116	2.24%
18 - 24	26,661,358	21.26%	883	17.06%
24 - 30	33,801,382	26.95%	1,244	24.03%
30 - 36	23,670,050	18.87%	1,000	19.32%
36 - 42	17,308,976	13.80%	823	15.90%
42 - 48	14,057,639	11.21%	744	14.37%
48 - 54	3,723,461	2.97%	199	3.84%
54 - 60	1,773,578	1.41%	97	1.87%
60 - 66	860,686	0.69%	43	0.83%
66 - 72	233,092	0.19%	15	0.29%
72 - 78	39,048	0.03%	2	0.04%
78 - 84	147,488	0.12%	10	0.19%
84 - 90	-	0.00%	-	0.00%
90 - 96	-	0.00%	-	0.00%
96 - 102	-	0.00%	-	0.00%
102 - 108	-	0.00%	-	0.00%
108 - 114	-	0.00%	-	0.00%
114 - 120	-	0.00%	-	0.00%
120+	-	0.00%	-	0.00%
Grand Total	125,427,586	100.00%	5,176	100.00%



**FP Ignition 2017-B Trust
as at 30 September 2018**

Contracts by Remaining Term

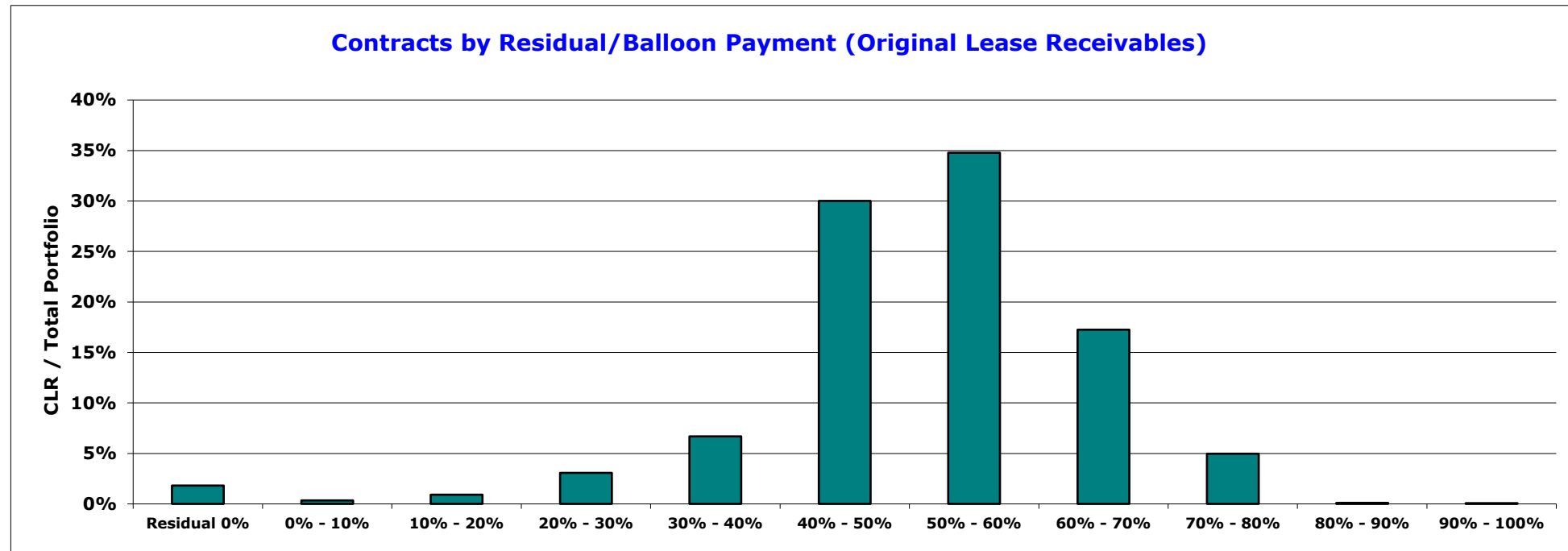
Remaining Term Band Yrs	Current Lease Receivable (CLR) (\$)	CLR / Total Portfolio (%)	Contracts No.	Contracts No. / Total Portfolio (%)
0 - 1	62,822,840	50.09%	3,054	59.00%
1 - 2	43,601,773	34.76%	1,612	31.14%
2 - 3	14,756,713	11.77%	425	8.21%
3 - 4	4,192,355	3.34%	84	1.62%
4 - 5	-	0.00%	-	0.00%
5 - 6	53,904	0.04%	1	0.02%
6 - 7	-	0.00%	-	0.00%
7 - 8	-	0.00%	-	0.00%
8 - 9	-	0.00%	-	0.00%
9 - 10	-	0.00%	-	0.00%
10+	-	0.00%	-	0.00%
Grand Total	125,427,586	100.00%	5,176	100.00%



**FP Ignition 2017-B Trust
as at 30 September 2018**

Contracts by Residual/Balloon Payment (Original Lease Receivables)

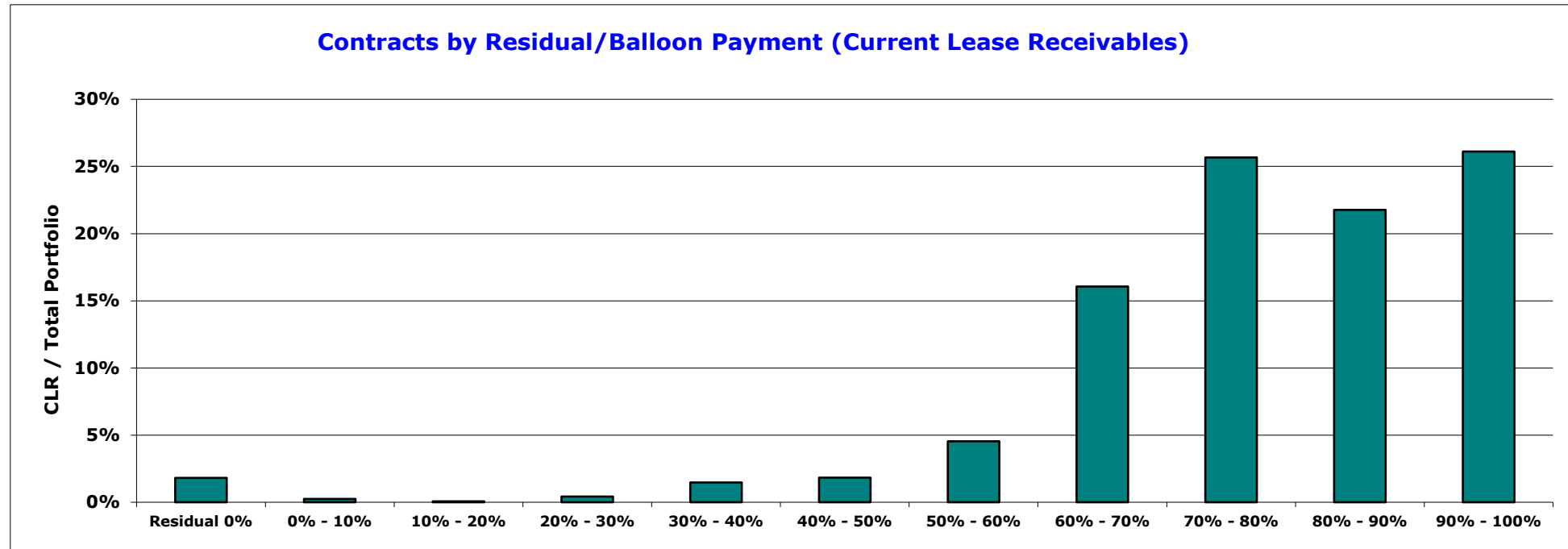
Residual Band (original)	Current Lease Receivable (CLR) (\$)	CLR / Total Portfolio (%)	Contracts No.	Contracts No. / Total Portfolio (%)
Residual 0%	2,274,843	1.81%	79	1.53%
0% - 10%	431,269	0.34%	17	0.33%
10% - 20%	1,143,739	0.91%	34	0.66%
20% - 30%	3,852,208	3.07%	107	2.07%
30% - 40%	8,385,797	6.69%	444	8.58%
40% - 50%	37,634,741	30.01%	1,729	33.40%
50% - 60%	43,618,414	34.78%	1,750	33.81%
60% - 70%	21,639,246	17.25%	779	15.05%
70% - 80%	6,232,950	4.97%	230	4.44%
80% - 90%	126,378	0.10%	5	0.10%
90% - 100%	88,000	0.07%	2	0.04%
Grand Total	125,427,586	100.00%	5,176	100.00%



**FP Ignition 2017-B Trust
as at 30 September 2018**

Contracts by Residual/Balloon Payment (Current Lease Receivables)

Residual Band (current)	Current Lease Receivable (CLR) (\$)	CLR / Total Portfolio (%)	Contracts No.	Contracts No. / Total Portfolio (%)
Residual 0%	2,274,843	1.81%	81	1.56%
0% - 10%	310,204	0.25%	4	0.08%
10% - 20%	81,930	0.07%	7	0.14%
20% - 30%	531,104	0.42%	15	0.29%
30% - 40%	1,846,037	1.47%	33	0.64%
40% - 50%	2,297,005	1.83%	53	1.02%
50% - 60%	5,692,378	4.54%	175	3.38%
60% - 70%	20,145,199	16.06%	741	14.32%
70% - 80%	32,196,729	25.67%	1,245	24.05%
80% - 90%	27,301,498	21.77%	1,122	21.68%
90% - 100%	32,750,659	26.11%	1,700	32.84%
Grand Total	125,427,586	100.00%	5,176	100.00%



FP Ignition 2017-B Trust
as at 30 September 2018

Contracts by New/Used

New/Used	Current Lease Receivable (CLR) (\$)	CLR / Total Portfolio (%)	Contracts No.	Contracts No. / Total Portfolio (%)
New	120,856,616	96.36%	4,966	95.94%
Used	4,570,970	3.64%	210	4.06%
Grand Total	125,427,586	100.00%	5,176	100.00%

